

BM-V-LD, BM-V-LB

INCLUDING: OPERATION, INSTRUCTION, INSTALLATION, MAINTENANCE AND PARTSBOOK

**IMPORTANT: READ THIS MANUAL CAREFULLY BEFORE INSTALLING, OPERATING OR
SERVICING THIS TOOL.**

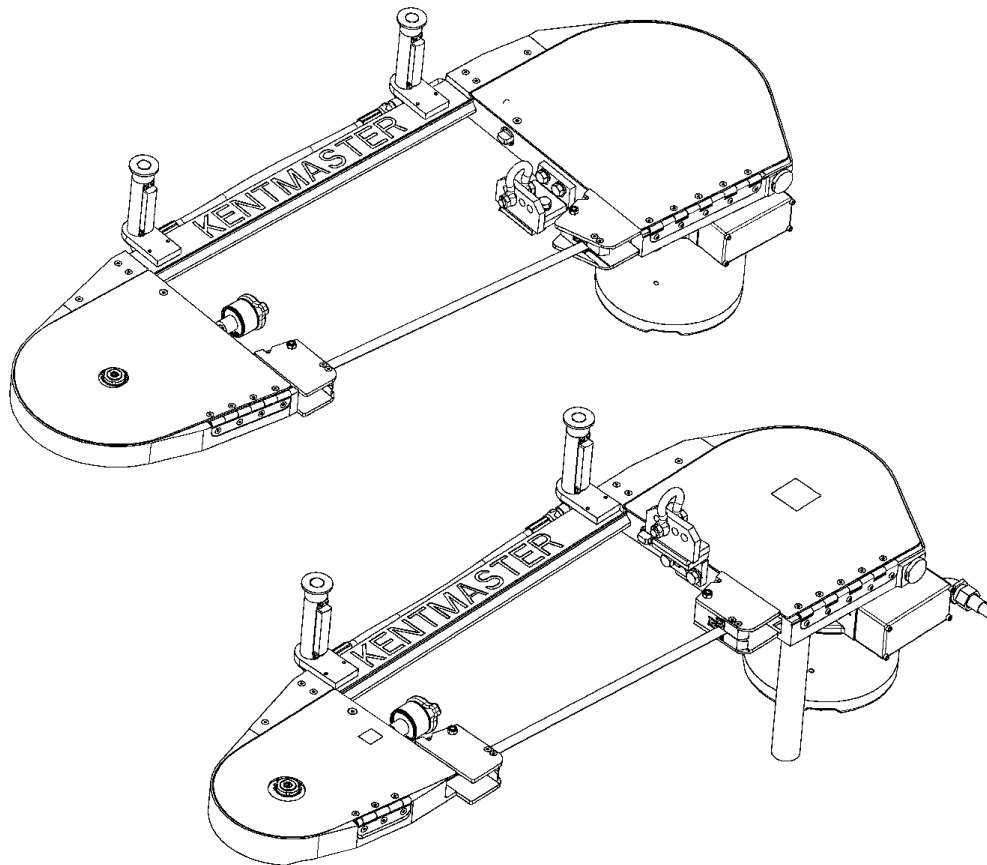
LOIN DROPPERS




TOOL DATA

MODEL: BANDMASTER BM-V-LD
ASSEMBLY NO. 1708070
TYPE: ELECTRICAL OPERATED
NET WEIGHT: 166 LB (75.5 KG)
MOTOR HORSEPOWER: 2HP / 3HP

MODEL: BANDMASTER BM-V-LB
ASSEMBLY NO. 1740000
TYPE: ELECTRICAL OPERATED
NET WEIGHT: 200 LB (91 KG)
MOTOR HORSEPOWER: 3HP / 5HP

VIBRATION: LESS THAN (<) 123 dB < 1.41m/s²
NOISE: LESS THAN 81dB



 WARNING	= Hazards or unsafe practices which could result in severe personal injury, death or substantial property damage.
 CAUTION	= Hazards or unsafe practices which could result in minor personal injury, product or property damage.
 NOTICE	= Important installation, operation or maintenance information.

OPERATING AND SAFETY INSTRUCTIONS

-  **WARNING** DO NOT OPERATE THIS TOOL UNTIL YOU HAVE READ AND UNDERSTOOD THE SAFETY INSTRUCTIONS AND OPERATING MANUALS.
-  **WARNING** DO NOT OPERATE THIS TOOL UNTIL YOU HAVE RECEIVED TRAINING IN THE HANDLING, OPERATION AND USE OF THIS TOOL.
-  **WARNING** STOP USING A MALFUNCTIONING OR DEFECTIVE TOOL IMMEDIATELY. REPORT ANY PROBLEMS OR DEFECTS TO YOUR SUPERVISOR FOR REMOVAL OF THE TOOL FROM SERVICE.
-  **WARNING** DO NOT ATTEMPT TO REPAIR THE TOOL YOURSELF.
-  **WARNING** DO NOT ALLOW UNAUTHORIZED PERSONS TO USE TOOL.
-  **WARNING** REMOVE AND DISCONNECT POWER FROM THE TOOL WHEN TOOL IS LEFT UNATTENDED OR IS NOT IN USE.
-  **WARNING** NEVER TIE DOWN, BYPASS, ALTER OR MODIFY THE ACTIVATING SWITCHES OR TRIGGERS OF THIS TOOL.
-  **WARNING** NEVER MAKE ALTERATIONS OR MODIFICATIONS TO THIS TOOL.
-  **WARNING** BE CONSTANTLY AWARE AND ALERT FOR UNSAFE CONDITIONS AND REPORT THEM IMMEDIATELY TO YOUR SUPERVISOR.
-  **WARNING** NEVER PLACE YOUR HAND OR ANY PART OF YOUR BODY IN THE CUTTING PATH OF THE TOOL.
-  **WARNING** NEVER ALLOW ANYONE ELSE TO PLACE THEIR HANDS OR ANY PART OF THEIR BODY IN THE CUTTING PATH OF THE TOOL.
-  **WARNING** DO NOT ACTIVATE CONTROL SWITCHES OR TRIGGERS OF THIS TOOL UNLESS YOU INTEND TO TEST OR OPERATE THIS TOOL.
-  **WARNING** DO NOT USE THIS TOOL FOR ANY PURPOSE OTHER THAN IT'S INTENDED PURPOSE.
-  **CAUTION** WHEN OPERATING THIS TOOL WEAR THE PROTECTIVE GEAR AND SAFETY EQUIPMENT SUPPLIED TO YOU.
-  **WARNING** THE NOISE EMISSION (SOUND PRESSURE LEVEL) AT THE WORKSTATION MAY EXCEED 80 dB (A). EAR AND SOUND PROTECTION GEAR IS REQUIRED.
 VIBRATION: LESS THAN (<) 123 dB < 1.41m/s²
 NOISE: LESS THAN 81dB

OPERATING INSTRUCTIONS

⚠ WARNING ONLY TRAINED PERSONNEL ARE TO OPERATE THIS TOOL.

1. TO ENSURE TOOL IS OPERATING PROPERLY, PERFORM FOLLOWING STEPS AT START OF EACH SHIFT:
 - MAKE SURE TOOL MOVES UP AND DOWN FREELY WHILE HANGING FROM BALANCER OVERHEAD.
 - WITH POWER TO TOOL TURNED ON, TEST TRIGGER FOR PROPER OPERATION.
 - DEPRESS EACH TRIGGER SEPARATELY. TOOL SHOULD NOT ACTIVATE. DEPRESS BOTH TRIGGERS. TOOL SHOULD ACTIVATE.
 - IF TOOL HAS "ANTI-TIE DOWN" OPTION, BOTH TRIGGERS MUST BE DEPRESSED SIMULTANEOUSLY FOR TOOL TO ACTIVATE.
2. TO PERFORM WORK, HOLD TOOL FIRMLY AT BOTH HANDLES. SQUEEZE TRIGGERS TO ACTIVATE TOOL.
3. START CUT WITH SAW NOSE POINTED UP AT AN ANGLE.
4. LEVEL SAW TO HORIZONTAL POSITION IN LOIN AREA.
5. POINT NOSE OF SAW AT DOWNWARD ANGLE IN CHUCK AND NECK AREA.
6. A BEGINNING SPLITTER CAN MARK BACKFAT OF BEEF WITH A KNIFE TO HELP SAW DOWN CENTER OF BACKBONE AND UNTIL OPERATOR IS FAMILIAR WITH SPLITTING PROCEDURE.
7. DO NOT EXERT EXCESSIVE PRESSURE. ALLOW TIME FOR THE TOOL TO CUT.
8. PUSH SAW FORWARD SO THAT GUARDS, ITEMS 1 AND 2 FIGURE 1, RIDE AGAINST BEEF. THIS HELPS STEADY SAW IN CUT AND HELPS ELIMINATE BLADE JUMPING AND CHATTERING.

MAINTENANCE

⚠ WARNING ONLY TRAINED AND QUALIFIED PERSONNEL ARE TO PERFORM MAINTENANCE AND SERVICE TO THIS TOOL.

1. TOOL REQUIRES GREASING AFTER 40 HOURS OF OPERATION. GREASE USING KENTMASTER GREASE (PART NO. 7903070).

BLADE REMOVAL AND CLEANING.

⚠ WARNING ALWAYS DISCONNECT POWER SUPPLY FROM TOOL BEFORE INSTALLING OR REMOVING BLADE FROM TOOL.

⚠ WARNING ALWAYS WEAR WIRE MESH GLOVES WHEN INSTALLING OR REMOVING BLADE FROM TOOL.

1. REMOVE PAPER WRAPPER FROM BLADE.
2. OPEN COVERS, FIGURE 1, ITEMS 1,2, 3 AND 4.
3. INSTALL TORQUE WRENCH, ITEM 5, INTO SCREW, FIGURE 1, ITEM 6, AND TURN COUNTER-CLOCKWISE (CCW). THIS ALLOWS TAKE-UP WHEEL AND SLIDE, ITEMS 7 AND 8, TO RETRACT.
4. SLIDE TAKE-UP WHEEL TO RIGHT.
5. HOLD BLADE, WITH TEETH FACING AWAY FROM YOU, AND INSTALL INTO SLOT OF BEAM, CONTINUING AROUND AND OVER THE TAKE-UP AND DRIVE WHEELS.
6. TURN TORQUE WRENCH CLOCKWISE (CW) TO ELIMINATE BLADE SLACK AND TIGHTEN TAKE-UP WHEEL AGAINST BLADE (TORQUE WRENCH IS PRESET AT FACTORY AND WILL SLIP AFTER PLACING PROPER TENSION ON BLADE).
7. TWIST BLADE 90° AT BLADE GUARDS AND INSERT BLADE INTO SLOTS WITH TEETH FACING DOWNWARD.
8. TURN DRIVE WHEEL, ITEM 9, SLOWLY BY HAND, TO CHECK TRACKING OF BLADE ON WHEELS.
9. RETORQUE AGAIN UNTIL TORQUE WRENCH SLIPS.

AT END OF EACH SHIFT:

1. REMOVE SAW BLADE.
2. IF USING BLADE AGAIN, WASH BLADE WITH HOT WATER TO REMOVE FAT, MEAT AND BONE PARTICLES.
3. DRY AND APPLY A COAT OF MINERAL OIL TO ENTIRE SURFACE OF BLADE TO AVOID OXIDATION.

CLEANING AND STERILIZING SAW

AT END OF EACH SHIFT:

1. REMOVE SAW BLADE.
2. CLEAN AND WASH DOWN BOTH INSIDE AND OUTSIDE OF ENTIRE MACHINE THOROUGHLY WITH HOT WATER AND CLEANING AGENT. AVOID USING HARSH CAUSTIC CLEANERS ON MACHINE.
3. WASH OFF ALL BONE DUST AND MEAT PARTICLES FROM INSIDE OF FRAMES, AROUND WHEELS AND GUIDES.
4. SPRAY BOTH INSIDE AND OUTSIDE OF MACHINE WITH A LIGHT COAT OF MINERAL OIL.

WATER CONNECTION

A BULKHEAD FITTING, FIGURE 1, ITEM 10, IS PROVIDED AT THE BASE OF DRIVE SIDE FRAME, ITEM 11, FOR CONNECTION TO COLD WATER. ADJUST CONNECTOR AND NOZZLE, ITEMS 12 AND 13, TO CLEAN BONE DUST FROM DRIVE WHEEL AND MEAT PARTICLES TRAPPED BETWEEN TEETH OF SAW BLADE. FITTING AND HOSE, ITEMS 14 AND 15, AT BASE OF DRIVE SIDE FRAME, ARE PROVIDED FOR DRAINAGE OF WASTE WATER.

TORQUE WRENCH CALIBRATION

TORQUE WRENCH, ITEM 5, IS CALIBRATED AND PRESET TO 55 INCH/LBS AT FACTORY. PERIODICALLY CHECK CALIBRATION BY USE OF ANOTHER TORQUE WRENCH WITH A DIAL TO MAKE ADJUSTMENT AND RESET TORQUE WRENCH TO 55 INCH/LBS. REMOVE TORQUE WRENCH COVER TO **CLEAN AND LUBRICATE PERIODICALLY.**

TESTING AND SETTING OF TORQUE WRENCH:

TOOLS REQUIRED:

- HEX WRENCH -- 3/16"
- HEX BAR -- 1/2", ABOUT 3"-6" LONG
- HEX SOCKET -- 1/2" WITH DRIVE END TO MATCH COMMERCIAL WRENCH SELECTED
- TORQUE WRENCH, COMMERCIAL DIAL TYPE PREFERABLE
- SCREWDRIVER -- 3/8"-7/16" FLAT BLADE

STEP 1 -- TESTING KENTMASTER TORQUE WRENCH

- A. ATTACH COMMERCIAL TORQUE WRENCH TO KENTMASTER TORQUE WRENCH USING 1/2" HEX BAR AND 1/2" HEX SOCKET.
- B. HOLD ASSEMBLY FIRMLY AND ROTATE KENTMASTER TORQUE WRENCH CLOCKWISE SLOWLY UNTIL WRENCH "***SLIPS***".
- C. INDICATOR NEEDLE ON COMMERCIAL TORQUE WRENCH SHOULD READ 55 IN/LBS ± 3 IN/LBS (5%). IF OVER OR UNDER VALUE, PROCEED TO STEP 2 -- RESETTING KENTMASTER TORQUE WRENCH.

STEP 2 -- RESETTING KENTMASTER TORQUE WRENCH

- A. USING 3/16" HEX WRENCH, REMOVE FOUR (4) SCREWS HOLDING THE WRENCH HANDLE IN PLACE. REMOVE HANDLE AND GASKET. SET ALL PARTS ASIDE FOR REUSE.
- B. HOLD WRENCH BODY SECURE BY EITHER CLAMPING SMALL DRIVE END IN VISE OR BY CLAMPING THE 1/2" HEX BAR IN VISE AND ATTACHING WRENCH TO BAR.

NOTE: Do not clamp body of Torque Wrench in vise as severe damage to Torque Wrench could occur.

- C. USE FLAT BLADE SCREWDRIVER TO ADJUST THE FOUR (4) SET SCREWS UNDER WRENCH HANDLE. USE A STAGGERED PATTERN WHILE ADJUSTING, SUCH AS UPPER, LOWER, LEFT THEN RIGHT.
 - TO REDUCE TORQUE VALUE - BACK OFF SET SCREWS COUNTER-CLOCKWISE ABOUT 1/8 TURN EACH.
 - TO INCREASE TORQUE VALUE - TURN IN SET SCREWS CLOCKWISE ABOUT 1/8 TURN EACH.
- D. REASSEMBLE TORQUE WRENCH WITH HANDLE AND GASKET. RETEST PER STEP 1. CONTINUE TESTING AND SETTING UNTIL WRENCH OPERATES AT PROPER TORQUE VALUE.

HANGER

THE SAW HANGER INCORPORATES TWO (2) ADJUSTMENT FEATURES: ADJUSTMENT "V" (VERTICAL) AND ADJUSTMENT "H" (HORIZONTAL). TO ADJUST THE SAW, LOOSEN TWO (2) SCREWS, ITEM 16, FIGURE 1 AND ADJUST ACCORDINGLY. TURN SHAFT ITEM 17, FIGURE 1 TO ADJUST WEIGHT OF SAW FROM FRONT TO REAR ACCORDING TO OPERATOR PREFERENCE.

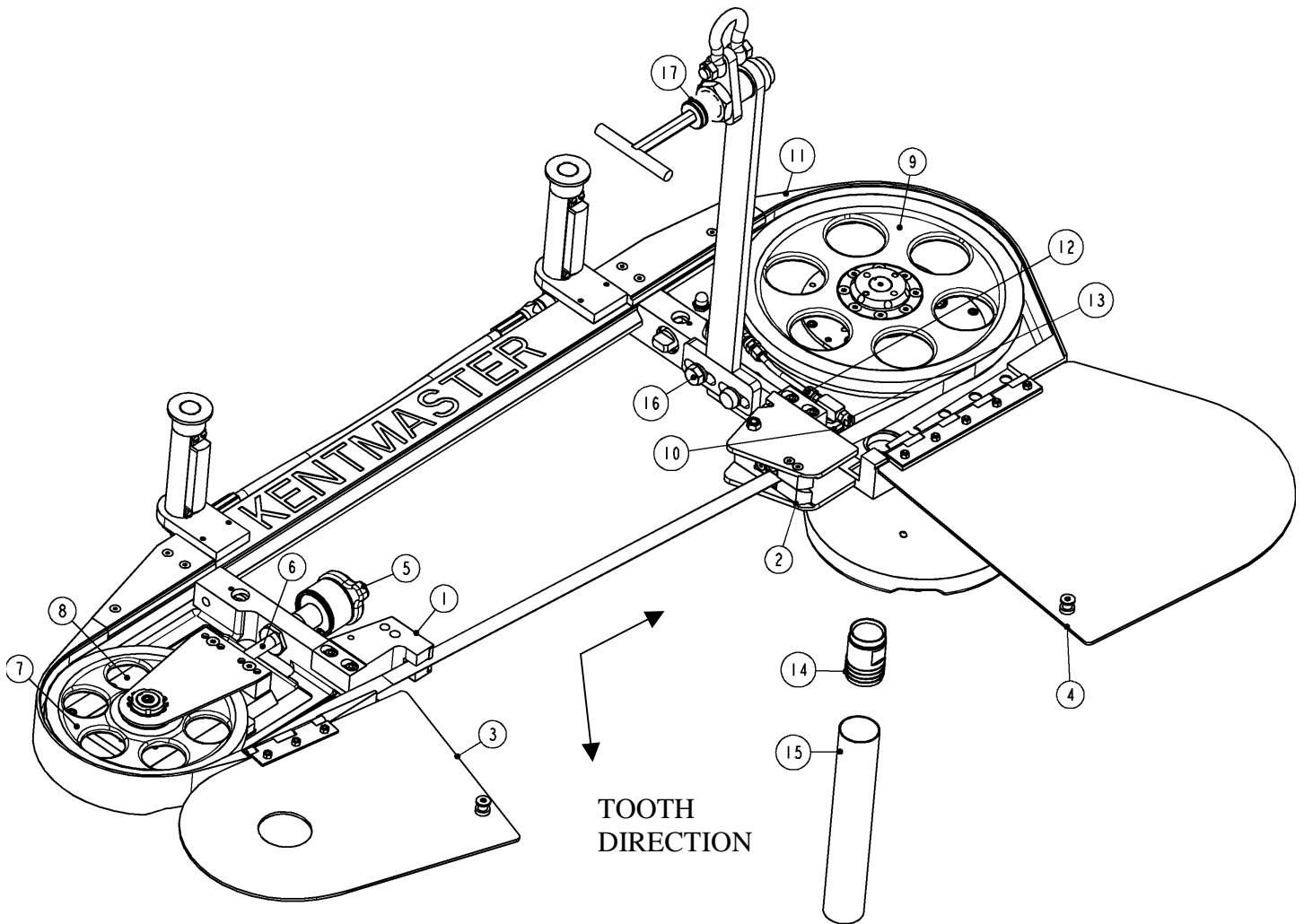


Figure 1 BM-V-LD

TROUBLE SHOOTING HINTS:

- BE SURE DRIVE WHEEL IS TURNING COUNTER-CLOCKWISE (CCW) AND BLADE IS INSTALLED WITH TEETH POINTED TOWARD DRIVE FRAME.
- BE SURE BLADE TEETH ARE SITTING ABOVE UNDERCUT ON BOTH WHEELS SO AS NOT TO AFFECT SET OF TEETH.
- CHECK GAP BETWEEN CARBIDE INSERTS WHICH MUST NOT BE TOO TIGHT OR TOO LOOSE. BLADE SHOULD SLIDE THROUGH WITHOUT PLAY. MAKE ADJUSTMENT IF NECESSARY.
- REPLACE SAW BLADE IN CASE BLADE IS DEFECTIVE.
- ADJUST SAW HANGER (ADJUSTMENT "V") IF SAW CUTS OFF CENTER TO RIGHT OR LEFT.
- ADJUST HANGER ("H" ADJUSTMENT) IF SAW NOSE RISES TOO EASILY AND ADDITIONAL WEIGHT MUST BE SHIFTED FORWARD.
- BE SURE SAW IS NOT DROPPING DOWN TOO QUICKLY. ADJUST BALANCER.
- BLADE OVER OR UNDER TORQUED. CHECK TORQUE WRENCH CALIBRATION.

BAD SPLIT

UNEVEN SPLIT

CUTS TO LEFT OR RIGHT

-
- CHECK IF BLADE IS BREAKING AT WELD. BLADE MAY BE DEFECTIVE.
 - WHEELS SLIPPING IN BLADE (EVIDENT BY VERY SHINY BLADE SURFACE). CHECK FOR INCORRECT TORQUE SETTING. CHECK TORQUE WRENCH CALIBRATION.
 - OPERATOR PUSHING SAW THROUGH BEEF EXCESSIVELY.
 - BLADE OVER OR UNDER TORQUED. CHECK TORQUE WRENCH CALIBRATION.
 - CHECK FOR PROPER GAP (.025"-.028", .64-.71mm) BETWEEN CARBIDE INSERTS.

PREMATURE BLADE CRACKING OR BREAKING

-
- CHECK FOR BONE DUST BUILD-UP AT GUIDES. CLEAN OUT AND INCREASE WATER FLOW IF NECESSARY.
 - CHECK IF BLADE IS SLIPPING ON WHEELS. LOOK FOR CAUSE AND CORRECT.
 - CHECK FOR PROPER GAP (.025"-.028", .64-.71mm) BETWEEN CARBIDE INSERTS. GAP MAY BE TOO TIGHT, CAUSING INSERTS TO MACHINE SIDES OF BLADE.
 - CHECK FOR CHIPPED OR CRACKED CARBIDE INSERTS AT BLADE GUARD ASSEMBLIES. ROTATE OR REPLACE IF NECESSARY.
 - WITH BLADE REMOVED, CHECK TAKE-UP WHEEL TO BE SURE IT SPINS FREELY.

BLACK APPEARS ON BACKBONE

-
- CHECK WHEELS FOR PLAY, LOOSENESS OR LOOSE SCREWS OR NUTS. CHECK TAKE-UP WHEEL BRACKET, TIGHTEN AND CORRECT PLAY.
 - CHECK WHEEL BEARINGS AND REPLACE IF DEFECTIVE.

BLADE SLIPS OFF WHEELS

- CHECK WHEELS FOR ROUNDNESS AND WEAR. BE SURE WHEEL FACES ARE NOT TAPERED OR HAVE FLAT SPOTS DUE TO WEAR. REPLACE IF DEFECTIVE.
- CHECK TAKE-UP WHEEL FOR PROPER TORQUE SETTING.
- LOOK FOR ANY BLADE OBSTRUCTIONS.

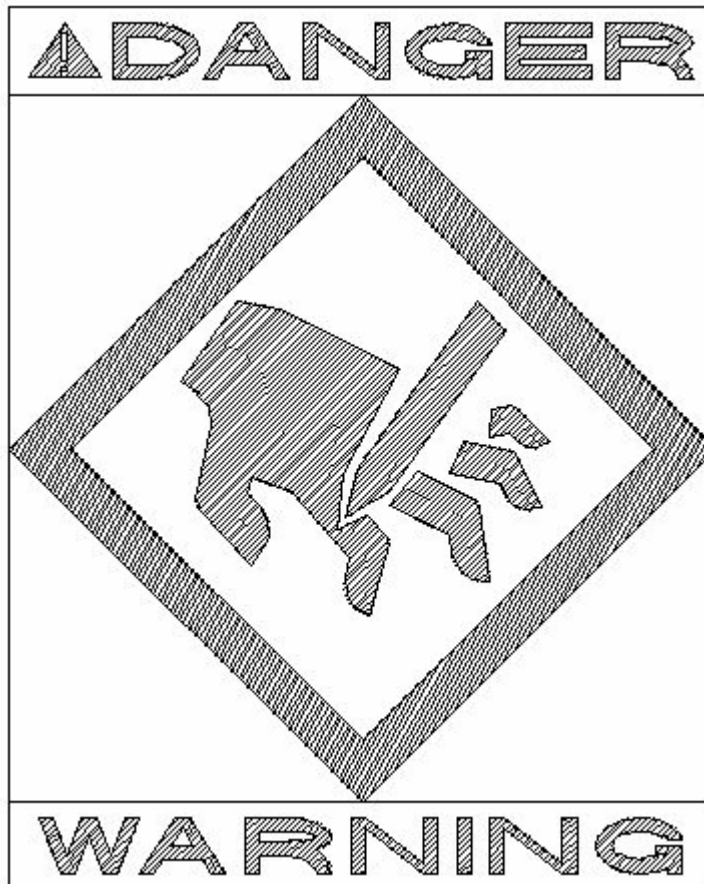
- CHANGE SAW BLADE. BLADE MAY BE DEFECTIVE.

**MOTOR PULLS EXCESSIVE
AMPERAGE (WITHOUT LOAD)
OR
BLADE IS TOO LOOSE WHILE
TORQUE WRENCH IS
PROPERLY CALIBRATED**

- REMOVE BLADE FROM MACHINE. BACK OFF SCREW, ITEM 6, WITH TORQUE WRENCH. GRAB TAKE-UP WHEEL WITH BOTH HANDS AND SLIDE BACK AND FORTH. IT SHOULD SLIDE FREELY. IF IT BINDS OR TAKES EXCESSIVE EFFORT, DISASSEMBLE COMPLETELY. CHECK TO SEE IF GIBS LOCATED ON EACH SIDE OF SLIDE ARE TOO CLOSE AND TIGHT AGAINST SLIDE. LOOSEN SCREWS THAT HOLD GIB IN PLACE. SPREAD GIBS SLIGHTLY OUT AND RETIGHTEN SCREWS. SLIDE SHOULD MOVE BACK AND FORTH FREELY, BUT WITHOUT UP AND DOWN PLAY. REASSEMBLE AND TEST MACHINE. LUBRICATE SURFACES BETWEEN SLIDE AND GIB.

SERVICE

1. KEEP GOOD RECORDS OF ALL SERVICE ACTIVITY AND INCLUDE TOOL IN PREVENTIVE MAINTENANCE PROGRAM.
2. USE ONLY GENUINE KENTMASTER REPLACEMENT PARTS TO ASSURE PROPER PERFORMANCE OF TOOL.
3. CONTACT THE KENTMASTER SUPPLIER NEAREST YOU FOR PARTS AND CUSTOMER SERVICE INFORMATION.



PARTS BOOK

MODELS MAIN ASSEMBLIES

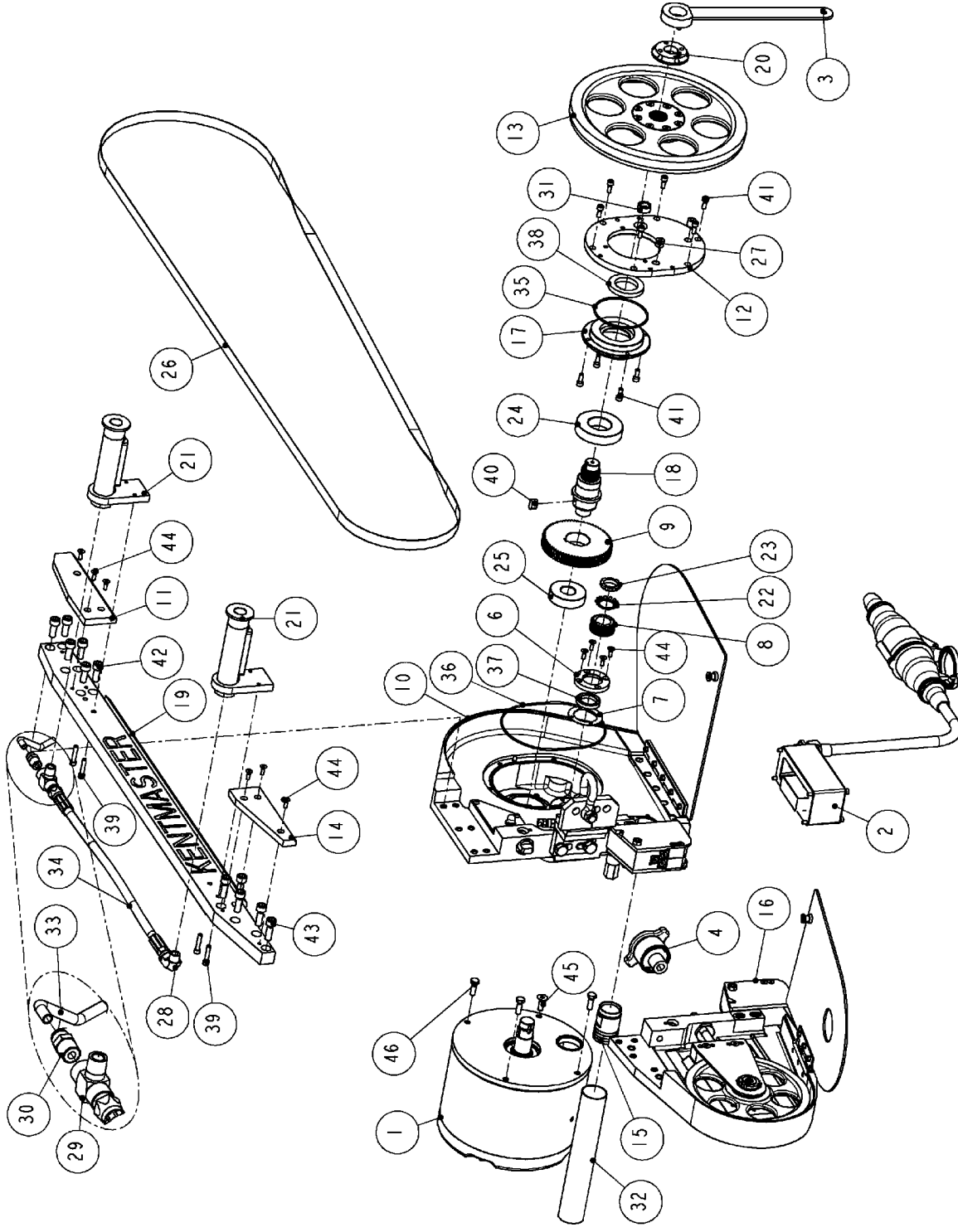


Figure 2 MODELS BM-V-LD

KENTMASTER MFG. CO., INC. 1801 SOUTH MOUNTAIN AVE., MONROVIA, CALIFORNIA 91016 UNITED STATES OF AMERICA

☎ TELEPHONE: (626) 359-8888 FAX: (626) 303-5151

1708070: BENDMASTER BM-V-LD			
ITEM	PART #	DESCRIPTION	QTY
1	OPTIONS	2HP MOTOR ASSEMBLY	1
	OPTIONS	3HP MOTOR ASSEMBLY	1
2	1720000	POWER SUPPLY, 42V, ANTI-TIE DOWN	1
	1720010	POWER SUPPLY, 42V, NO ANTI-TIE DOWN	1
	1720020	POWER SUPPLY, NON 42V, ANTI-TIE DOWN	1
	1720030	POWER SUPPLY, NON 42V, NO ANTI-TIE DOWN	1
	1720005	POWER SUPPLY, SINGLE PHASE, 115V	1
	1720030	POWER SUPPLY, SINGLE PHASE, 230V	1
3	4501610	WRENCH / TOOL	1
4	1700800	TORQUE WRENCH / TOOL	1
5	1709790	WRENCH, ADJUSTMENT / TOOL	1
6	1704130	CAP	1
7	1704220	GASKET	1
8	1705590	GEAR, DRIVE / USE WITH 2HP MOTOR 50/60 Hz	1
	1704150	GEAR, DRIVE / USE WITH 3HP MOTOR 60Hz	1
	1704430	GEAR, DRIVE / USE WITH 3HP MOTOR 50Hz	1
9	1705850	GEAR, DRIVEN / USE WITH 2HP MOTOR 50/60 Hz	1
	1707340	GEAR, DRIVEN / USE / WITH 3HP MOTOR 60Hz	1
	1707350	GEAR, DRIVEN / USE WITH 3HP MOTOR 50Hz	1
10	1708071	DRIVE SIDE ASSEMBLY	1
11	1708430	COVER	1
12	1708460	COVER, GEAR	1
13	1708500	DRIVE WHEEL ASSEMBLY	1
14	1708610	COVER	1
15	1708840	FITTING	1
16	1709201	TAKE-UP SIDE ASSEMBLY	1
17	1709620	FLANGE	1
18	1709630	SHAFT	1
19	1709840	BEAM	1
20	1710070	NUT	1
21	1710090	HANDLE ASSEMBLY	2
22	3000090	LOCKWASHER	1
23	3001090	LOCKNUT	1
24	3200080	BEARING	1
25	3316050	BEARING	1
26	4111020	BLADE	1
27	7000020	PLUG	2
28	7000420	ELBOW	1
29	7007730	MALE BRANCH TEE	1
30	7036150	FITTING	1
31	7240710	WINDOW	1
32	7300200	DISCHARGE HOSE	1
33	7300755	TUBE	1
34	7310170	HOSE	1
35	7681530	O-RING	1
36	7681650	O-RING	1
37	7798170	SEAL	1
38	7798220	SEAL	1
39	8211100	SCREW	4
40	8607060	KEY	1
41	9211050	SCREW	10
42	9215080	SCREW	6
43	9215100	SCREW	5
44	9239050	SCREW	10
45	9243080	SCREW	1
46	9413070	SCREW	3

Figure 3 BOM FOR MODELS BM-V-LD

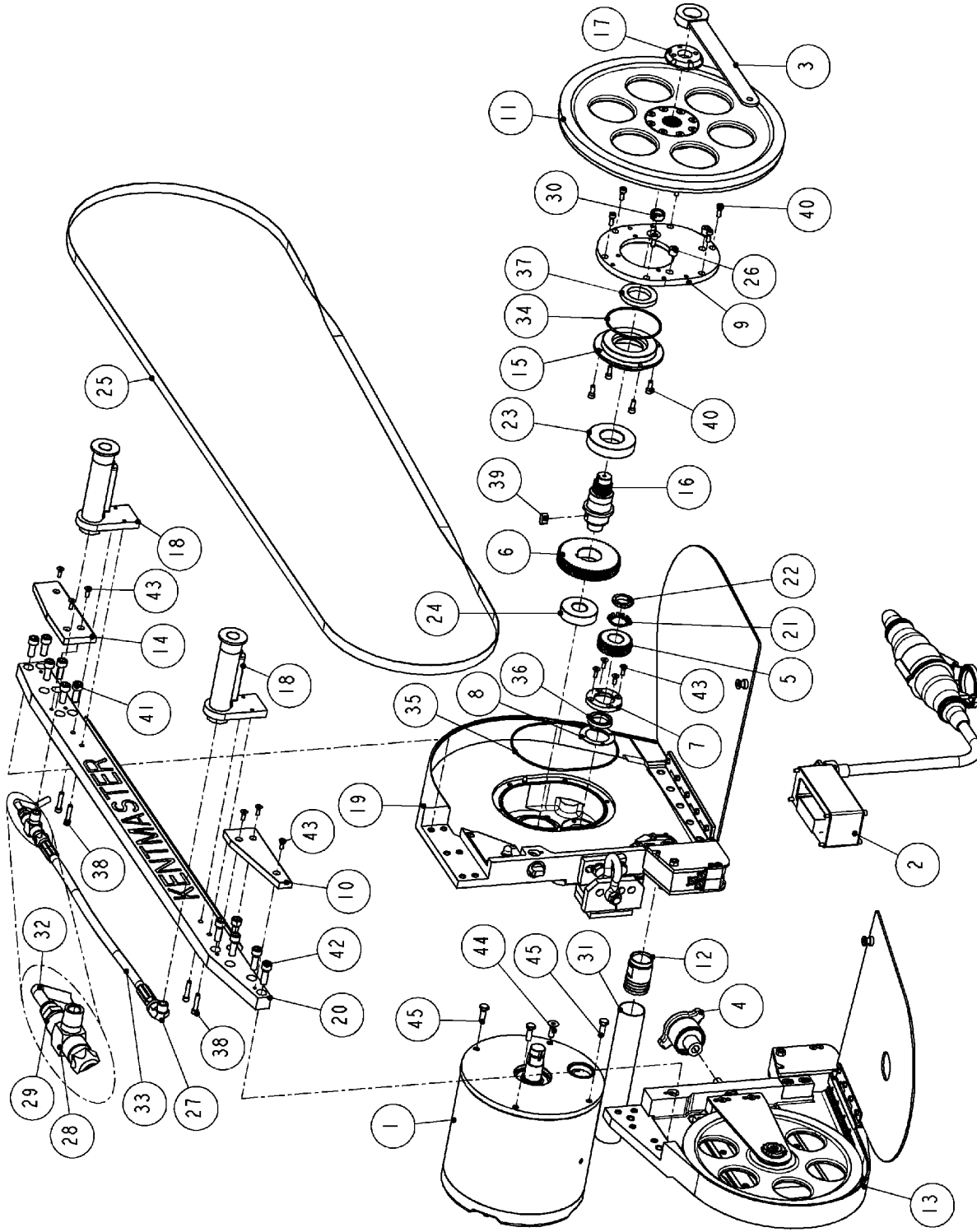


Figure 4 MODEL BM-V-LB

KENTMASTER MFG. CO., INC. 1801 SOUTH MOUNTAIN AVE., MONROVIA, CALIFORNIA 91016 UNITED STATES OF AMERICA

☎ TELEPHONE: (626) 359-8888 FAX: (626) 303-5151

1740000: BENDMASTER BM-V-LB			
ITEM	PART #	DESCRIPTION	QTY
1	OPTIONS	3HP MOTOR ASSEMBLY	1
	OPTIONS	5HP MOTOR ASSEMBLY	1
2	1720000	POWER SUPPLY, 42V, ANTI-TIE DOWN	1
	1720010	POWER SUPPLY, 42V, NO ANTI-TIE DOWN	1
	1720020	POWER SUPPLY, NON 42V, ANTI-TIE DOWN	1
	1720030	POWER SUPPLY, NON 42V, NO ANTI-TIE DOWN	1
3	4501610	WRENCH / TOOL	1
4	1700800	TORQUE WRENCH / TOOL	1
5	1705150	GEAR, DRIVE / FOR 60Hz FREQUENCY	1
	1704150	GEAR, DRIVE / FOR 50Hz FREQUENCY	1
6	1705770	GEAR, DRIVEN / FOR 60Hz FREQUENCY	1
	1707340	GEAR, DRIVEN / FOR 50Hz FREQUENCY	1
7	1704130	CAP	1
8	1704220	GASKET	1
9	1708460	COVER, GEAR	1
10	1708610	COVER	1
11	1708790	DRIVE WHEEL ASSEMBLY	1
12	1708840	FITTING	1
13	1709505	TAKE-UP SIDE ASSEMBLY	1
14	1709600	COVER	1
15	1709620	FLANGE	1
16	1709630	SHAFT	1
17	1710070	NUT	1
18	1710090	HANDLE ASSEMBLY	2
19	1740100	DRIVE SIDE ASSEMBLY	1
20	1740102	BEAM	1
21	3000090	LOCKWASHER	1
22	3001090	LOCKNUT	1
23	3200080	BEARING	1
24	3316050	BEARING	1
25	4111100	BLADE	1
26	7000020	PLUG	2
27	7000420	ELBOW	1
28	7007730	MALE BRANCH TEE	1
29	7036150	FITTING	1
30	7240710	WINDOW	1
31	7300200	DISCHARGE HOSE	1
32	7300756	TUBE	1
33	7310171	HOSE	1
34	7681530	O-RING	1
35	7681650	O-RING	1
36	7798170	SEAL	1
37	7798220	SEAL	1
38	8211100	SCREW	4
39	8607060	KEY	1
40	9211050	SCREW	10
41	9215080	SCREW	6
42	9215100	SCREW	5
43	9239050	SCREW	10
44	9243080	SCREW	1
45	9413070	SCREW	3

Figure 5 BOM FOR MODEL BM-V-LB

TAKE-UP SIDE ASSEMBLY

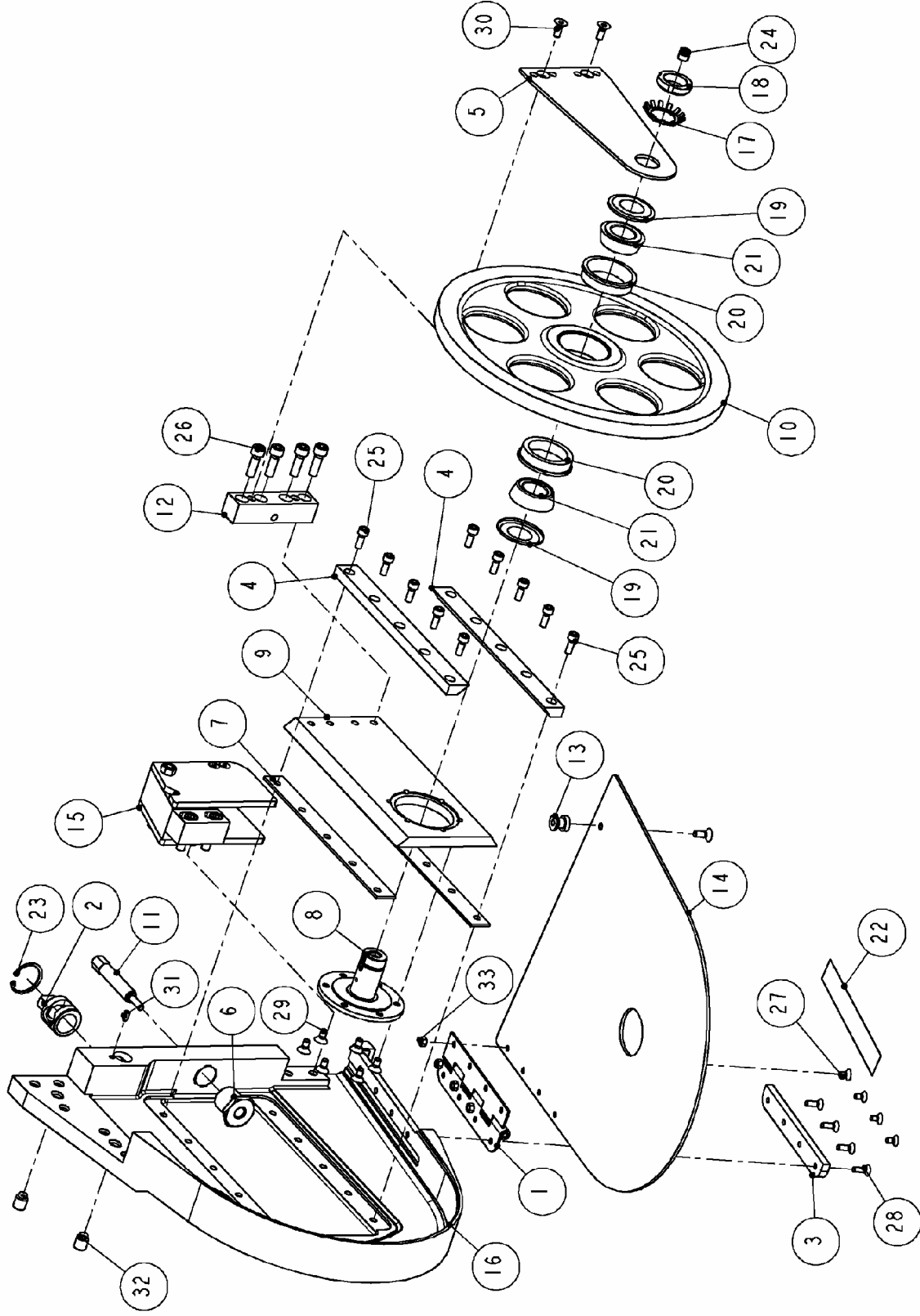


Figure 6 TAKE-UP SIDE ASSEMBLY

KENTMASTER MFG. CO., INC. 1801 SOUTH MOUNTAIN AVE., MONROVIA, CALIFORNIA 91016 UNITED STATES OF AMERICA

☎ TELEPHONE: (626) 359-8888 FAX: (626) 303-5151

		TAKE-UP SIDE ASSEMBLY	1709201	1709505
ITEM	PART #	DESCRIPTION	QTY MODEL BM-V-LD	QTY MODEL BM-V-LB
1	1704560	HINGE ASSEMBLY	-	1
	1709590	HINGE ASSEMBLY	1	-
2	1704670	KNOB	1	1
3	1704710	PLATE	-	1
	1709570	PLATE	1	-
4	1704780	GIB	-	2
	1709550	GIB	2	-
5	1704790	HOLDER, SHAFT	-	1
	1706360	HOLDER, SHAFT	1	-
6	1704800	INSERT, ADJUSTABLE SCREW	1	1
7	1704810	SPACER	-	2
	1709560	SPACER	2	-
8	1708470	SHAFT	1	1
9	1708490	SLIDE	-	1
	1708930	SLIDE	1	-
10	1708530	WHEEL, TAKE-UP	-	1
	1708710	WHEEL, TAKE-UP	1	-
11	1708560	SCREW, ADJUSTABLE	-	1
	1709530	SCREW, ADJUSTABLE	1	-
12	1708570	BLOCK, SLIDE	1	1
13	1708590	CATCH	1	1
14	1708600	COVER	-	1
	1708900	COVER	1	-
15	1709090	BLADE GUIDE ASSEMBLY	1	1
16	1709500	FRAME, TAKE-UP SIDE	-	1
	1708850	FRAME, TAKE-UP SIDE	1	-
17	3000080	LOCKWASHER	1	1
18	3001500	LOCKNUT	1	1
19	3005280	NILOS RING	2	2
20	3650590	BEARING CUP	2	2
21	3650960	TAPER BEARING CONE	2	2
22	4505020	LABEL, DANGER/WARNING	1	1
23	5001250	RETAINING RING	1	1
24	7018150	FITTING - LUBE	1	1
25	9211050	SCREW	6	10
26	9213080	SCREW	4	4
27	9239030	SCREW	3	4
28	9239050	SCREW	3	4
29	9241030	SCREW	6	6
30	9241050	SCREW	3	3
31	9333000	SET SCREW	1	1
32	9333070	SET SCREW	2	2
33	9500090	NUT	3	4

TAKE-UP WHEEL ADJUSTMENT

TAKE-UP WHEEL, ITEM 10, MUST TURN FREELY BUT WITHOUT EXCESSIVE PLAY OR LOOSENESS. ELIMINATE EXCESSIVE PLAY BY TIGHTENING NUT, ITEM 18, AT CENTAR OF TAKE-UP WHEEL.

Figure 7 TAKE-UP SIDE ASSEMBLY BOM

DRIVE SIDE ASSEMBLY

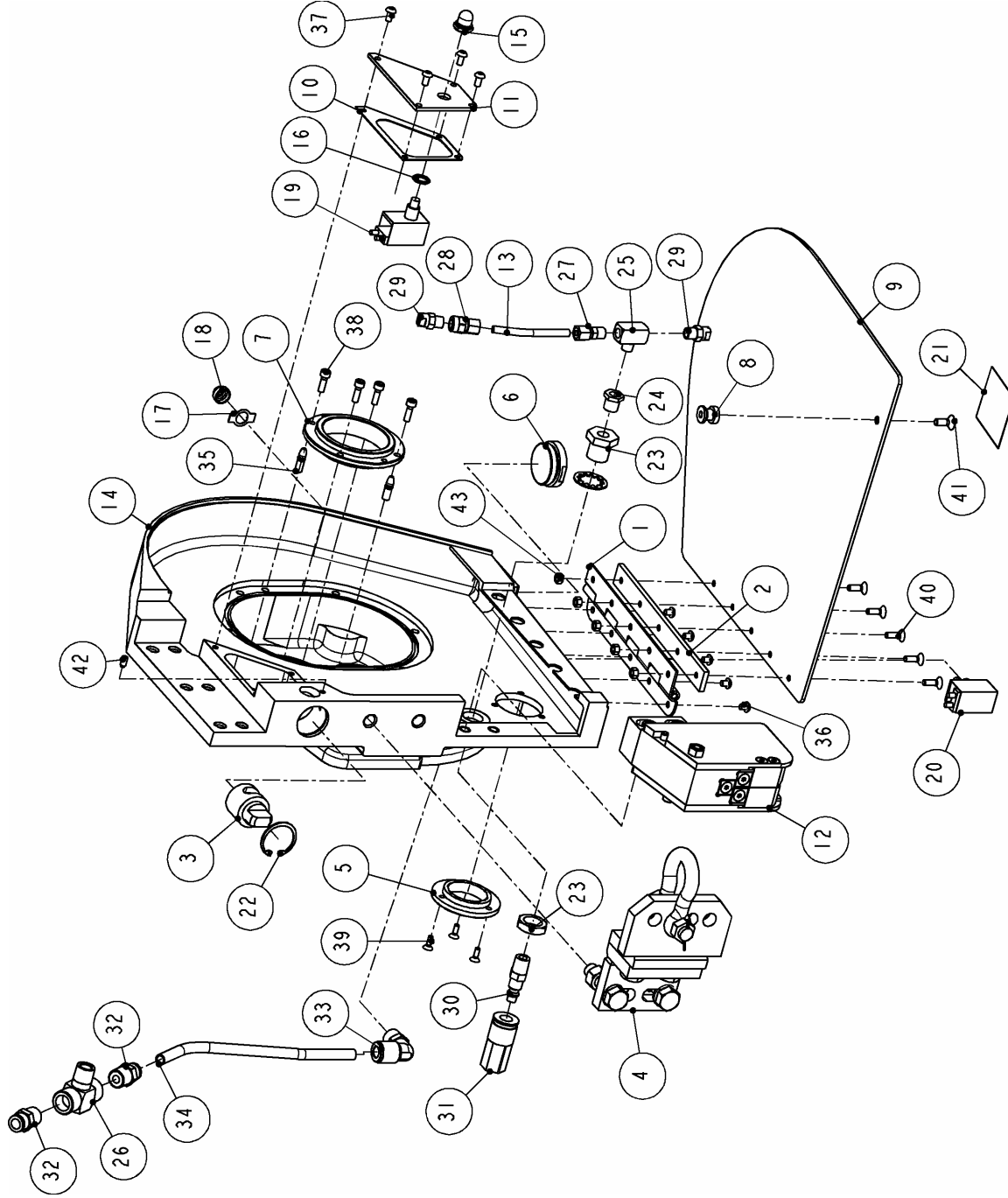


Figure 8 DRIVE SIDE ASSEMBLY, BM-V-LD

KENTMASTER MFG. CO., INC. 1801 SOUTH MOUNTAIN AVE., MONROVIA, CALIFORNIA 91016 UNITED STATES OF AMERICA

☎ TELEPHONE: (626) 359-8888 FAX: (626) 303-5151

1708071: DRIVE SIDE ASSEMBLY, BM-V-LD			
ITEM	PART #	DESCRIPTION	QTY
1	1704650	HINGE ASSEMBLY	1
2	1704660	SPACER, HINGE	1
3	1704670	KNOB	1
4	1707560	HANGER ASSEMBLY	1
5	1708081	ADAPTER	1
6	1708082	PLUG	1
7	1708550	FLANGE, REAR	1
8	1708590	CATCH	1
9	1708690	COVER, DRIVE SIDE	1
10	1708990	GASKET	1
11	1709000	SWITCH COVER	1
12	1709102	BLADE GUIDE ASSEMBLY	1
13	1709661	TUBE	1
14	1709850	FRAME, DRIVE SIDE	1
15	2000020	BOOT, PUSH BUTTON	1
16	2000080	LOCKNUT	1
17	2000130	ON-OFF PLATE	1
18	2000140	BOOT, TOGGLE SWITCH	1
19	2000700	SWITCH	1
20	2000730	SWITCH	1
21	4505030	LABEL, ELECTRIC ARROW, WARNING	1
22	5001250	RETAINING RING	1
23	7001270	BULKHEAD COUPLING	1
24	7003650	PIPE BUSHING	1
25	7004400	TEE	1
26	7007730	MALE BRANCH TEE	1
27	7011230	CONNECTOR	1
28	7011530	CONNECTOR	1
29	7011650	SPRAY NOZLE	2
30	7034070	MALE PLUG	1
31	7034090	SOCKET	1
32	7036150	FITTING	2
33	7036450	ELBOW	1
34	7300754	TUBE	1
35	8622500	DOWEL PIN	2
36	9050020	SCREW	5
37	9050040	SCREW	4
38	9209050	SCREW	4
39	9238040	SCREW	3
40	9239050	SCREW	5
41	9241050	SCREW	1
42	9333000	SET SCREW	1
43	9500090	NUT	5

Figure 9 DRIVE SIDE ASSEMBLY BOM, BM-V-LD

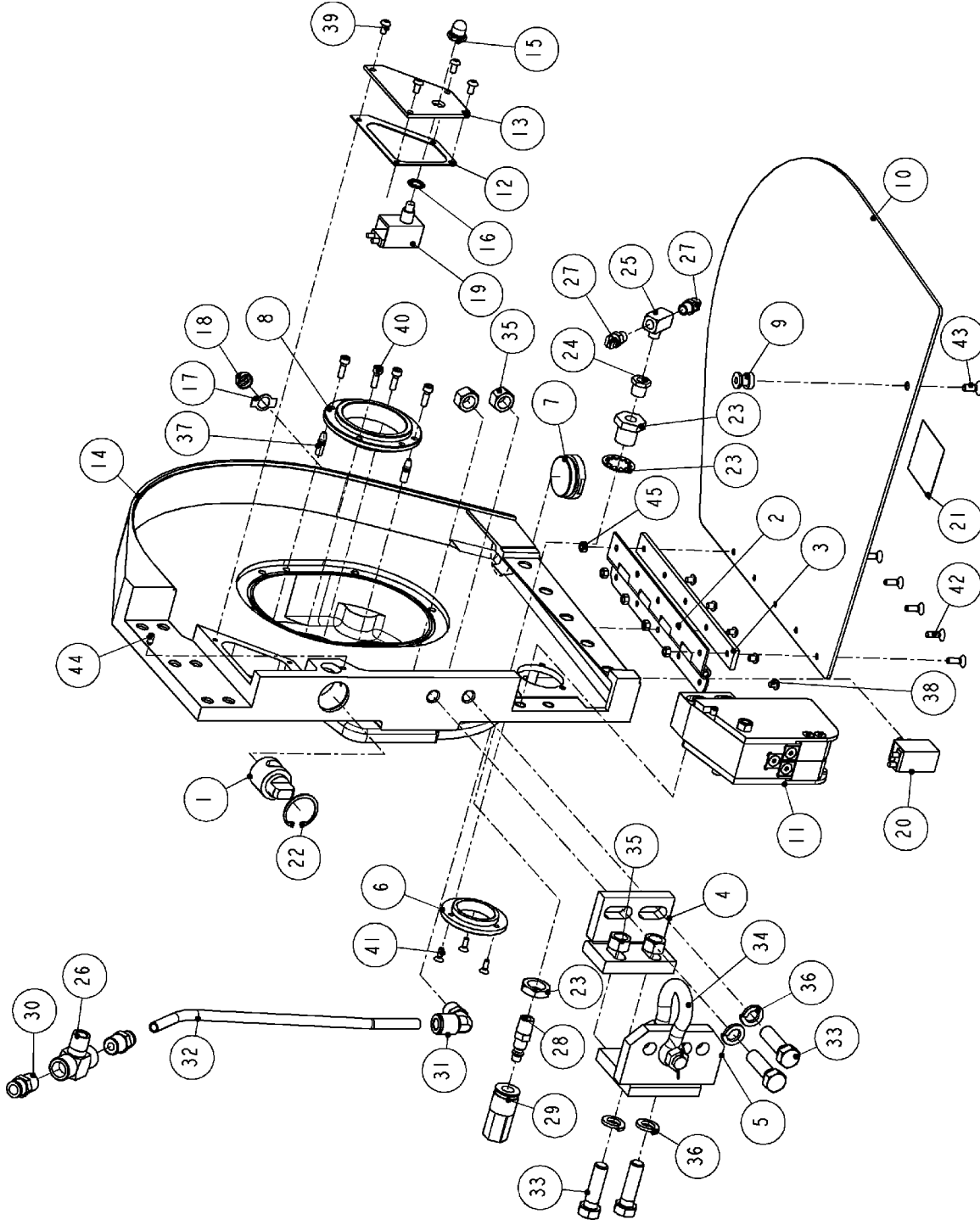


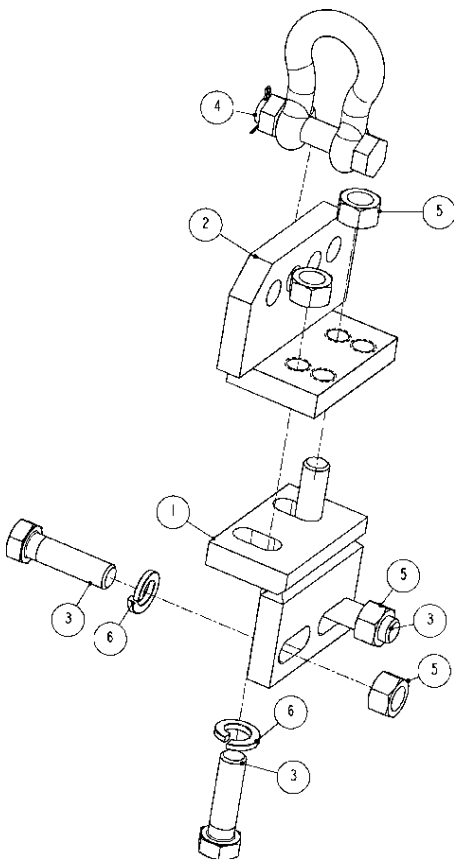
Figure 10 DRIVE SIDE ASSEMBLY, BM-V-LB

KENTMASTER MFG. CO., INC. 1801 SOUTH MOUNTAIN AVE., MONROVIA, CALIFORNIA 91016 UNITED STATES OF AMERICA

☎ TELEPHONE: (626) 359-8888 FAX: (626) 303-5151

1740100: DRIVE SIDE ASSEMBLY, BM-V-LB			
ITEM	PART #	DESCRIPTION	QTY
1	1704670	KNOB	1
2	1705540	HINGE ASSEMBLY	1
3	1705560	SPACER, HINGE	1
4	1707540	HANGER, MOUNTING	1
5	1707550	ANCHOR MOUNT ASSEMBLY	1
6	1708081	ADAPTER	1
7	1708082	PLUG	1
8	1708550	FLANGE, REAR	1
9	1708590	CATCH	1
10	1708780	COVER, DRIVE SIDE	1
11	1709102	BLADE GUIDE ASSEMBLY	1
12	1709380	GASKET	1
13	1709390	SWITCH COVER	1
14	1740101	FRAME, DRIVE SIDE	1
15	2000020	BOOT, PUSH BUTTON	1
16	2000080	LOCKNUT	1
17	2000130	ON-OFF PLATE	1
18	2000140	BOOT, TOGGLE SWITCH	1
19	2000700	SWITCH	1
20	2000730	SWITCH	1
21	4505030	LABEL, ELECTRIC ARROW, WARNING	1
22	5001250	RETAINING RING	1
23	7001270	BULKHEAD COUPLING	1
24	7003650	PIPE BUSHING	1
25	7004400	TEE	1
26	7007730	MALE BRANCH TEE	1
27	7011650	SPRAY NOZLE	2
28	7034070	MALE PLUG	1
29	7034090	SOCKET	1
30	7036150	FITTING	2
31	7036450	ELBOW	1
32	7300757	TUBE	1
33	8418140	SCREW	4
34	8462080	ANCHOR SHACKLE	1
35	8500200	NUT	4
36	8506180	WASHER	4
37	8622500	DOWEL PIN	2
38	9050020	SCREW	5
39	9050040	SCREW	4
40	9209050	SCREW	4
41	9238040	SCREW	3
42	9239050	SCREW	5
43	9241050	SCREW	1
44	9333000	SET SCREW	1
45	9500090	NUT	5

Figure 11 DRIVE SIDE ASSEMBLY BOM, BM-V-LB



1707560: HANGER ASSEMBLY			
ITEM	PART #	DESCRIPTION	QTY
1	1707540	HANGER, MOUNTING	1
2	1707570	ANCHOR MOUNT ASSEMBLY	1
3	8418140	SCREW	4
4	8462080	ANCHOR SHACKLE	1
5	8500200	NUT	4
6	8506180	WASHER	4

Figure 12 HANGER ASSEMBLY, BM-V-LD

TRANSMISSION

REFERENCE: MODEL BM-V-LD

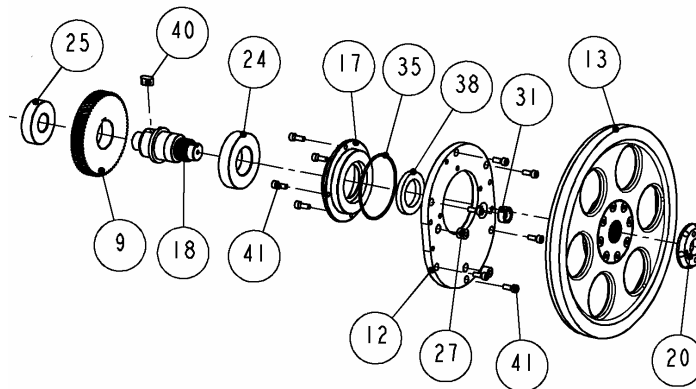
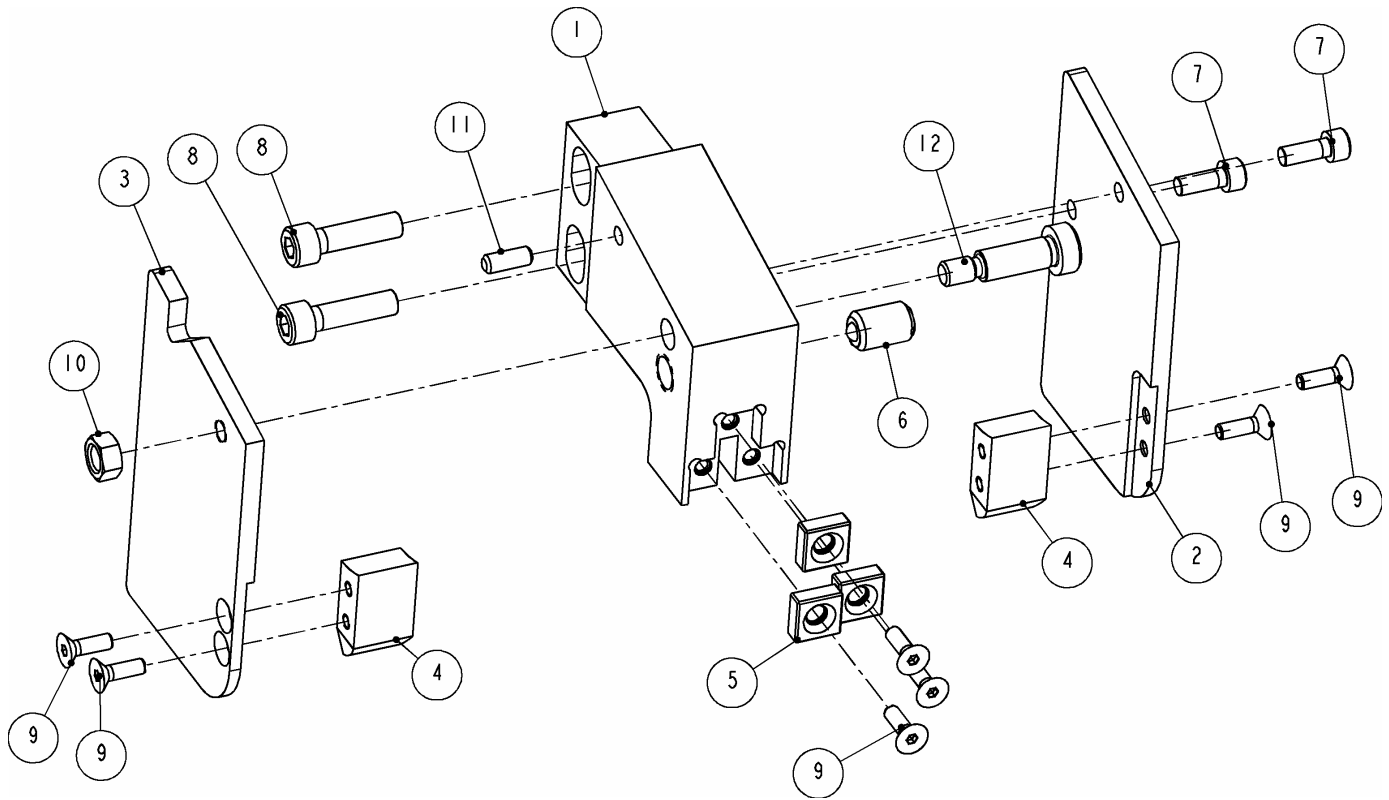


Figure 13 TRANSMISSION OVERVIEW

TRANSMISSION AND SPEED REDUCTION GEARS ARE LOCATED BEHIND DRIVE WHEEL AND CAN BE SERVICED BY OPENING DRIVE WHEEL COVER. A ROUND GLASS SIGHT GAGE IS LOCATED BEHIND DRIVE WHEEL AND CAN BE VIEWED WITHOUT WHEEL REMOVAL. A PLUG IS LOCATED BELOW THE SIGHT GAGE FOR DRAINING AND ANOTHER ABOVE FOR FILLING WITH OIL. PERIODICALLY CHECK OIL LEVEL AND ADD OIL IF LEVEL BELOW SIGHT GAGE WITH SAW IN HORIZONTAL POSITION. IF OIL LOOKS CONTAMINATED WITH WATER, GRITTY OR BROKEN DOWN, DRAIN AND REFILL TO ABOVE SIGHT GAGE WITH HIGH QUALITY GEAR LUBRICANT. WE RECOMMEND MOBILUBE HD 80W-90 SAE 80W-90 GEAR LUBRICANT, MULTI-PURPOSE. TRANSMISSION SHOULD BE FLUSHED OUT AND REFILLED AFTER EVERY 200 HOURS OF OPERATION, AND WHEN OPENED UP FOR MAINTENANCE. THE GEAR LUBRICANT USED SHOULD ALSO BE USED FOR FLUSHING OUT TRANSMISSION.

BLADE GUIDE ASSEMBLY, TAKE-UP SIDE



1709090: BLADE GUIDE ASSEMBLY, FRONT			
ITEM	PART #	DESCRIPTION	QTY
1	1708630	GUIDE HOLDER	1
2	1708640	REAR GUARD	1
3	1708650	FRONT GUARD	1
4	1709110	GUIDE	2
5	8865050	CARBID INSERT	3
6	8895100	BALL PLUNGER	1
7	9211050	SCREW	2
8	9213100	SCREW	2
9	9239050	SCREW	7
10	9501430	NUT	1
11	9620450	PIN	1
12	9870340	SCREW	1

Figure 14 BLADE GUIDE ASSEMBLY, FRONT (BM-V-LD & -LB)

BLADE GUARD ADJUSTMENTS

BLADE GUARD CONSISTS OF TWO (2) CARBIDE INSERTS, ITEM 5 FIGURE 14, THROUGH WHICH THE BLADE PASSES, AND A BACK-UP INSERT LOCATED JUST ABOVE THE BLADE. THE INSERTS SHOULD BE CLEANED DAILY AND INSPECTED PERIODICALLY FOR WEAR AND PROPER GAP WIDTH. THE INSERTS MAY BE ROTATED UNTIL ALL FOUR (4) SIDES ARE WORN, AND THEN TURNED OVER FOR AN ADDITIONAL FOUR (4) SIDES. THE BACK-UP INSERT SHOULD BE ROTATED WHEN A GROOVE IS WORN INTO IT OR WEAR IS APPARENT.

GAP ADJUSTMENT:

1. REMOVE FOUR (4) SCREWS, ITEM 9, FIGURE 14.
2. CLEAN, LUBRICATE AND ROTATE OR REPLACE INSERTS.

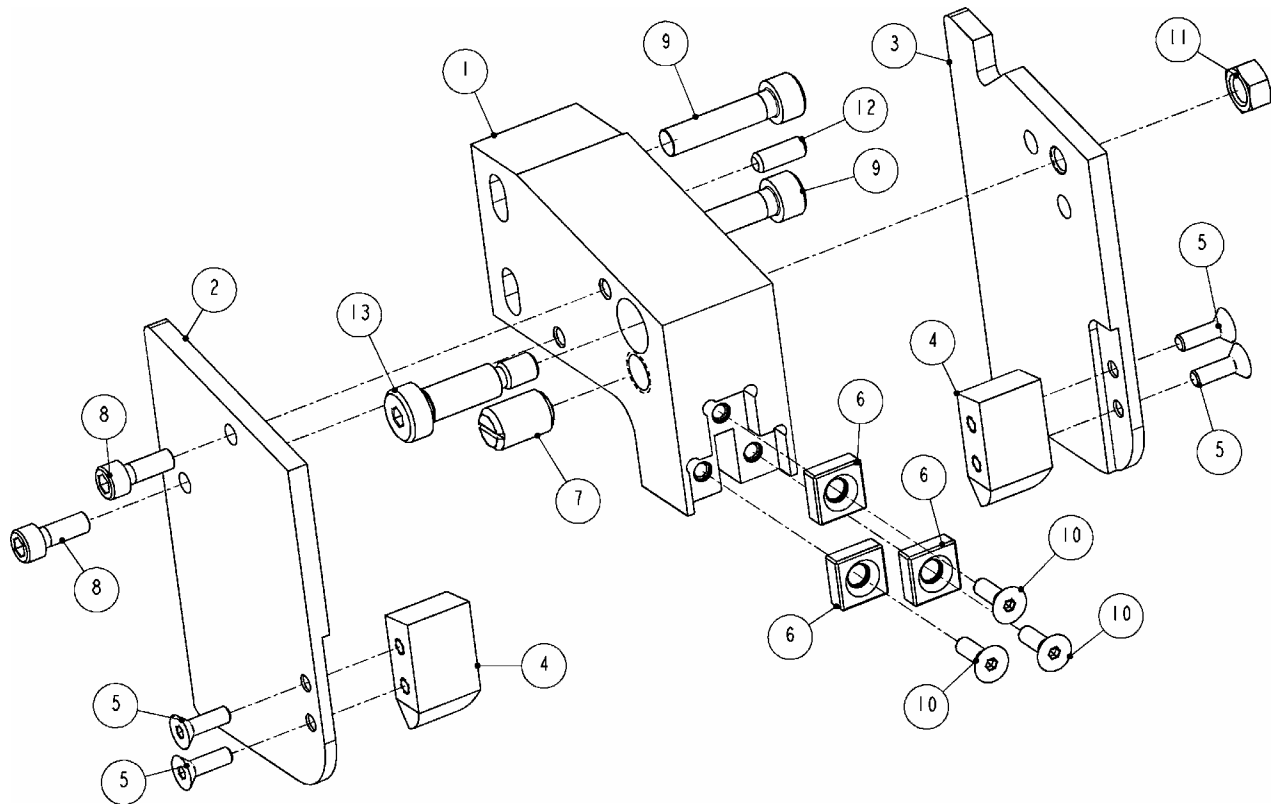
THERE ARE TWO (2) FIBER GUIDES, ITEM 4, LOCATED UNDER INSERTS. THEY HELP KEEP BLADE FROM BEING PULLED OUT OF GAP. REPLACE GUIDES IF EXCESSIVELY WORN.

WITH SAW IN FREE RUNNING CONDITION, CHECK BLADE'S VERTICAL LOCATION BETWEEN INSERTS. PROPER LOCATION IS TOP OF BLADE JUST TOUCHING BACK-UP INSERT.

VERTICAL ADJUSTMENT:

1. LOOSEN TWO (2) SCREWS, ITEM 8.
2. SLIDE BLADE GUARD UP OR DOWN AS NEEDED.
3. RETIGHTEN SCREWS.

BLADE GUIDE ASSEMBLY, DRIVE SIDE

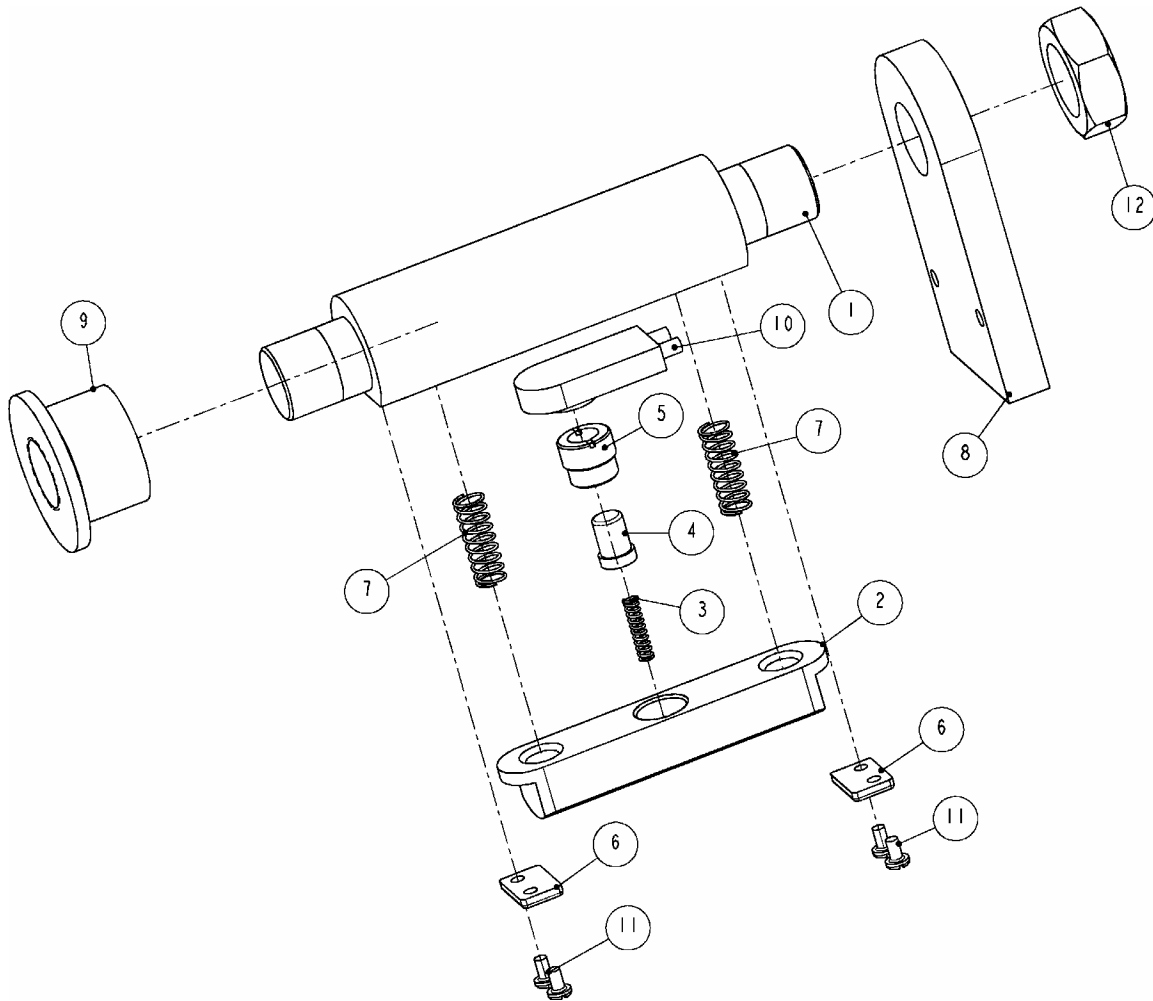


1709102: BLADE GUIDE ASSEMBLY, REAR			
ITEM	PART #	DESCRIPTION	QTY
1	1708660	GUIDE HOLDER	1
2	1708670	REAR GUARD	2
3	1708680	FRONT GUARD	1
4	1709110	GUIDE	2
5	8239050	SCREW	4
6	8865050	CARBID INSERT	3
7	8895100	BALL PLUNGER	1
8	9211050	SCREW	2
9	9213110	SCREW	2
10	9239050	SCREW	3
11	9501430	NUT	1
12	9620450	PIN	1
13	9870340	SCREW	1

REFER TO “BLADE GUIDE ASSEMBLY, TAKE-UP SIDE” (FIGURE 14) FOR ADJUSTMENT INSTRUCTIONS.

Figure 15 BLADE GUIDE ASSEMBLY, DRIVE SIDE (BM-V-LD & LB)

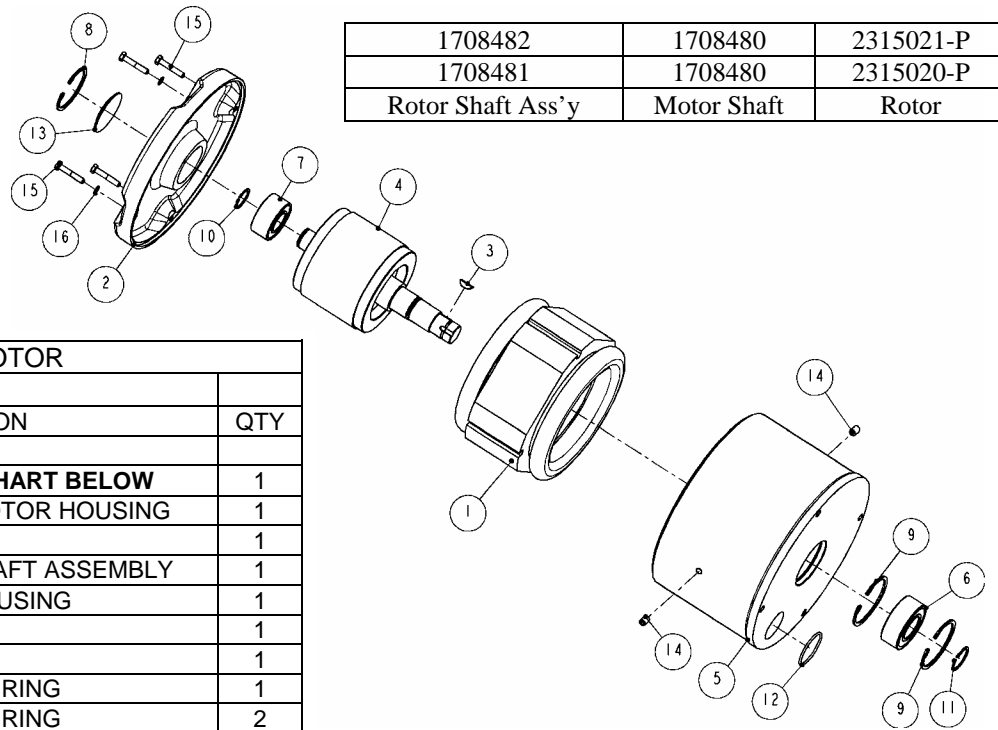
HANDLES



1710090; HANDLE ASSEMBLY, BM-V-L_			
ITEM	PART #	DESCRIPTION	QTY
1	1302420	HANDLE	1
2	1302430	TRIGGER	1
3	1302440	SPRING	1
4	1302450	PLUNGER	1
5	1302460	HOLDER, PLUNGER	1
6	1302470	HOLDER	2
7	1701550	SPRING	2
8	1709810	BRACKET	1
9	1709830	CAP	1
10	2000690	SWITCH	1
11	8086020	SCREW	4
12	8500580	NUT	1

Figure 16 HANDLE ASSEMBLY, BM-V-LD & LB

MOTOR ASSEMBLY

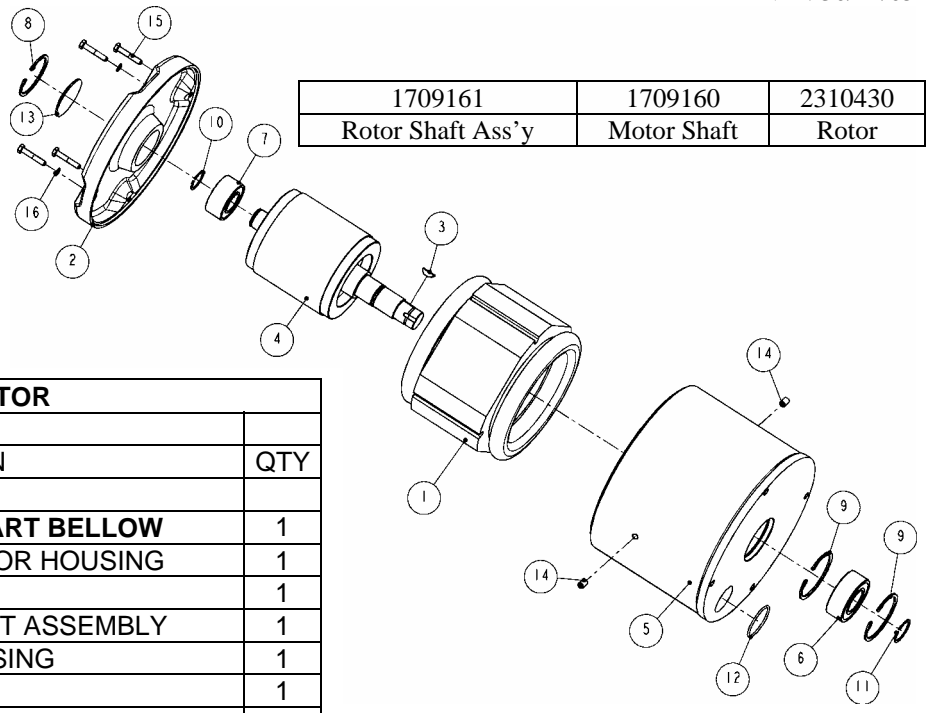


1708482	1708480	2315021-P
1708481	1708480	2315020-P
Rotor Shaft Ass'y	Motor Shaft	Rotor

BM-V: 2HP MOTOR			
ITEM	PART #	DESCRIPTION	QTY
1	OPTIONS	STATOR, CHART BELOW	1
2	1501800	COVER, MOTOR HOUSING	1
3	1705620	KEY	1
4	OPTIONS	ROTOR-SHAFT ASSEMBLY	1
5	1708580	MOTOR HOUSING	1
6	3522060	BEARING	1
7	3524050	BEARING	1
8	5002120	RETAINING RING	1
9	5002440	RETAINING RING	2
10	5100980	RETAINING RING	1
11	5101180	RETAINING RING	1
12	7681300	O-RING	1
13	7902170	EXPANSION PLUG	1
14	9313040	SET SCREW	2
15	9411100	SCREW	4
16	9507100	WASHER	4

MOTOR ASS'Y 230V, 2HP, 1PH, 60HZ, 10AMPS	1709332-230-160	2310050	1708482
MOTOR ASS'Y 115V, 2HP, 1PH, 60HZ, 20AMPS	1709332-115-160	2310050	1708482
MOTOR ASS'Y 42V, 2HP, 3PH, 50HZ, 30.0AMPS	1709330	2311580	1708481
MOTOR ASS'Y 380V, 2HP, 3PH, 50HZ, 5.1AMPS	1709320-380-350	2311640	1708481
MOTOR ASS'Y 220V, 2HP, 3PH, 50HZ, 10.2AMPS	1709320-220-350	2311640	1708481
MOTOR ASS'Y 416V, 2HP, 3PH, 50HZ, 3.0AMPS	1709290-416-350	2310510	1708481
MOTOR ASS'Y 208V, 2HP, 3PH, 50HZ, 6.0AMPS	1709290-208-350	2310510	1708481
MOTOR ASS'Y 230V, 2HP, 3PH, 50HZ, 6.0AMPS	1709310-230-350	2311600	1708481
MOTOR ASS'Y 115V, 2HP, 3PH, 50HZ, 12.0AMPS	1709310-115-350	2311600	1708481
MOTOR ASS'Y 550V, 2HP, 3PH, 60HZ, 2.5AMPS	1709300	2310540	1708481
MOTOR ASS'Y 380V, 2HP, 3PH, 60HZ, 3.6AMPS	1720110-380-360	2323060	1708481
MOTOR ASS'Y 220V, 2HP, 3PH, 60HZ, 7.4AMPS	1720110-220-360	2323060	1708481
MOTOR ASS'Y 460V, 2HP, 3PH, 60HZ, 3.0AMPS	1709290-460-360	2310510	1708481
MOTOR ASS'Y 230V, 2HP, 3PH, 60HZ, 6.0AMPS	1709290-230-360	2310510	1708481
MOTOR ASS'Y 416V, 2HP, 3PH, 60HZ, 3.3AMPS	1709280-416-360	2310500	1708481
MOTOR ASS'Y 208V, 2HP, 3PH, 60HZ, 6.6AMPS	1709280-208-360	2310500	1708481
MOTOR OPTION DESCRIPTION	MOTOR ASS'Y	STATOR	ROTOR
BM-V: 2HP MOTOR ASSEMBLY OPTIONS with STATOR			

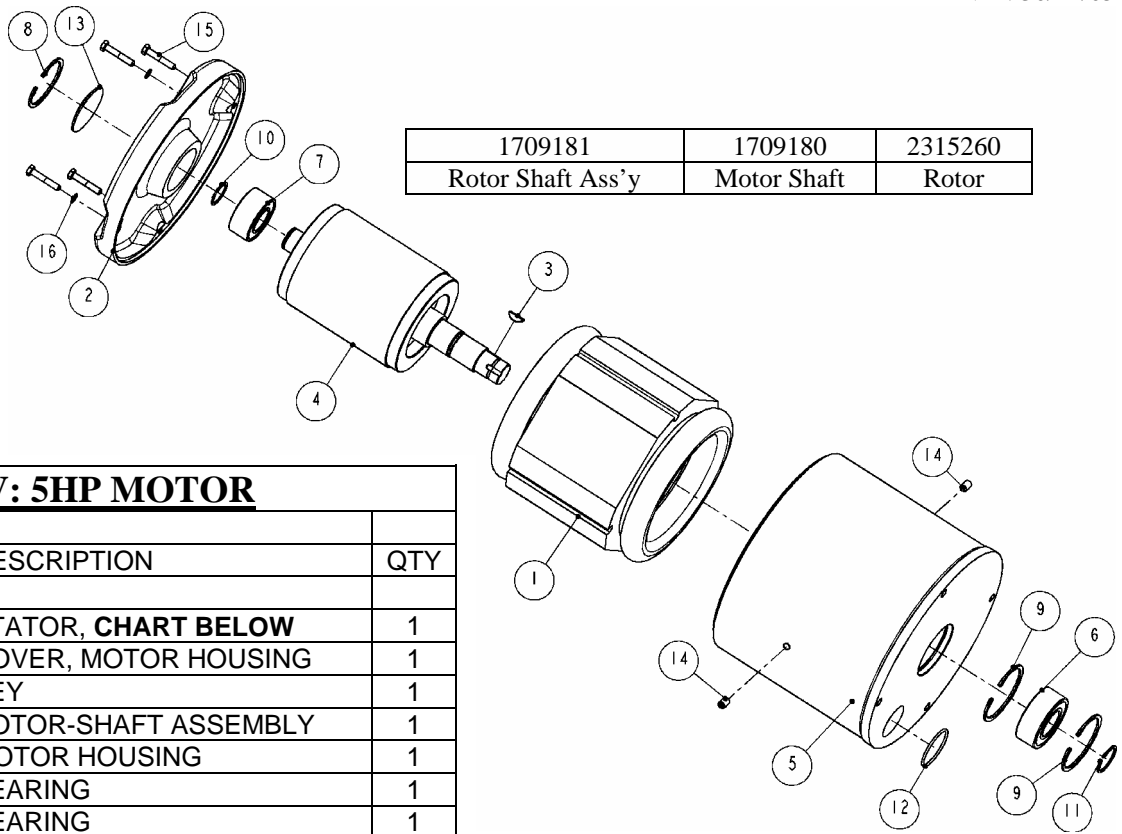
Figure 17 2HP MOTOR OPTIONS



BM-V: 3HP MOTOR			
ITEM	PART #	DESCRIPTION	QTY
1	OPTIONS	STATOR, CHART BELLOW	1
2	1501800	COVER, MOTOR HOUSING	1
3	1705620	KEY	1
4	1709161	ROTOR-SHAFT ASSEMBLY	1
5	1709170	MOTOR HOUSING	1
6	3522060	BEARING	1
7	3524050	BEARING	1
8	5002120	RETAINING RING	1
9	5002440	RETAINING RING	2
10	5100980	RETAINING RING	1
11	5101180	RETAINING RING	1
12	7681300	O-RING	1
13	7902170	EXPANSION PLUG	1
14	9313040	SET SCREW	2
15	9411100	SCREW	4
16	9507100	WASHER	4

MOTOR ASS'Y 42V, 3HP, 3PH, 50HZ, 50.0AMPS	1709260	2310420
MOTOR ASS'Y 380V, 3HP, 3PH, 50HZ, 6.5AMPS	1709250-380-350	2313800
MOTOR ASS'Y 220V, 3HP, 3PH, 50HZ, 11.5AMPS	1709250-220-350	2313800
MOTOR ASS'Y 416V, 3HP, 3PH, 50HZ, 4.6AMPS	1709210-416-350	2310711
MOTOR ASS'Y 208V, 3HP, 3PH, 50HZ, 9.2AMPS	1709210-208-350	2310711
MOTOR ASS'Y 230V, 3HP, 3PH, 50HZ, 10.8AMPS	1709230-230-350	2311840
MOTOR ASS'Y 115V, 3HP, 3PH, 50HZ, 21.6AMPS	1709230-115-350	2311840
MOTOR ASS'Y 550V, 3HP, 3PH, 60HZ, 3.8AMPS	1709220	2310770
MOTOR ASS'Y 380V, 3HP, 3PH, 60HZ, 5.6AMPS	1709225-380-360	2310830
MOTOR ASS'Y 220V, 3HP, 3PH, 60HZ, 9.6AMPS	1709225-220-360	2310830
MOTOR ASS'Y 460V, 3HP, 3PH, 60HZ, 4.6AMPS	1709210-460-360	2310711
MOTOR ASS'Y 230V, 3HP, 3PH, 60HZ, 9.2AMPS	1709210-230-360	2310711
MOTOR ASS'Y 416V, 3HP, 3PH, 60HZ, 5.1AMPS	1709200-416-360	2310780
MOTOR ASS'Y 208V, 3HP, 3PH, 60HZ, 10.2AMPS	1709200-208-360	2310780
MOTOR OPTION DESCRIPTION	MOTOR ASS'Y	STATOR
BM-V: 3HP MOTOR ASSEMBLY OPTIONS with STATOR		

Figure 18 3HP MOTOR OPTIONS

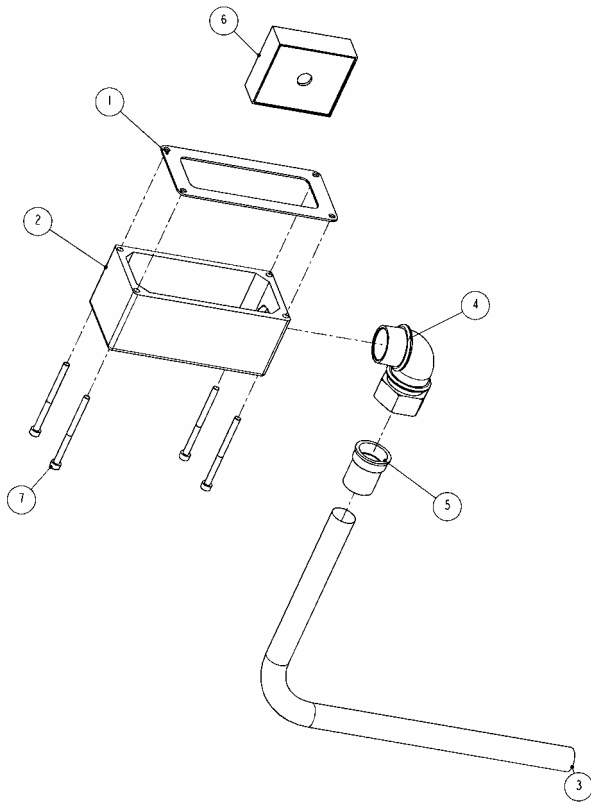


BM-V: 5HP MOTOR			
ITEM	PART #	DESCRIPTION	QTY
1	OPTIONS	STATOR, CHART BELOW	1
2	1501800	COVER, MOTOR HOUSING	1
3	1705620	KEY	1
4	1709181	ROTOR-SHAFT ASSEMBLY	1
5	1709920	MOTOR HOUSING	1
6	3522060	BEARING	1
7	3524050	BEARING	1
8	5002120	RETAINING RING	1
9	5002440	RETAINING RING	2
10	5100980	RETAINING RING	1
11	5101180	RETAINING RING	1
12	7681300	O-RING	1
13	7902170	EXPANSION PLUG	1
14	9313040	SET SCREW	2
15	9411100	SCREW	4
16	9507100	WASHER	4

MOTOR ASS'Y 380V, 5HP, 3PH, 60HZ, 7.8AMPS	1703054-380-360	2311910
MOTOR ASS'Y 220V, 5HP, 3PH, 60HZ, 14.7AMPS	1703054-220-360	2311910
MOTOR ASS'Y 380V, 5HP, 3PH, 50HZ, 7.8AMPS	1703050-380-350	2311920
MOTOR ASS'Y 220V, 5HP, 3PH, 50HZ, 14.7AMPS	1703050-220-350	2311920
MOTOR ASS'Y 42V, 5HP, 3PH, 50HZ, 78.0AMPS	1703051	2311870
MOTOR ASS'Y 460V, 5HP, 3PH, 60HZ, 7.0AMPS	1703021-460-360	2310750
MOTOR ASS'Y 230V, 5HP, 3PH, 60HZ, 14.0AMPS	1703021-230-360	2310750
MOTOR ASS'Y 230V, 5HP, 3PH, 50HZ, 14.5AMPS	1703042-230-350	2311450
MOTOR ASS'Y 115V, 5HP, 3PH, 50HZ, 29.0AMPS	1703042-115-350	2311450
MOTOR OPTION DESCRIPTION	MOTOR ASS'Y	STATOR
BM-V: 5HP MOTOR ASSEMBLY OPTIONS with STATOR		

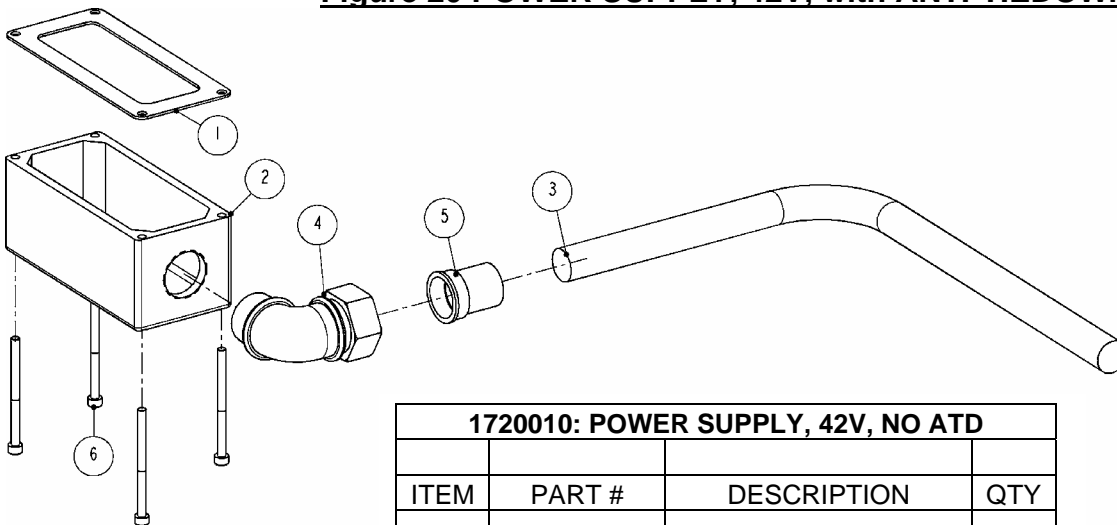
Figure 19 5HP MOTOR OPTIONS

POWER SUPPLY OPTIONS



1720000: POWER SUPPLY, 42V, ATD			
ITEM	PART #	DESCRIPTION	QTY
1	1708730	GASKET	1
2	1709480	COVER, WIRE BOX, 42V, ATD	1
3	2001090	POWER CORD	1
4	2008200	CABLE CONNECTOR	1
5	2008210	CORD GRIP	1
6	2009120	TIMER	1
7	9209240	SCREW	4

Figure 20 POWER SUPPLY, 42V, with ANTI-TIEDOWN



1720010: POWER SUPPLY, 42V, NO ATD			
ITEM	PART #	DESCRIPTION	QTY
1	1708730	GASKET	1
2	1709480	COVER, WIRE BOX	1
3	2007030	POWER CORD	1
4	2008200	CABLE CONNECTOR	1
5	2008210	CORD GRIP	1
6	9209240	SCREW	4

Figure 21 POWER SUPPLY, 42V, without ANTI-TIEDOWN

1720020: POWER SUPPLY, NON 42V, ANTI-TIE DOWN			
ITEM	PART #	DESCRIPTION	QTY
1	1708730	GASKET	1
2	1709460	COVER, WIRE BOX	1
3	2001080	POWER CORD	1
4	2001610	SOCKET, MALE	1
5	2001620	SOCKET, FEMALE	1
6	2008180	CABLE CONNECTOR	1
7	2008220	CORD GRIP	1
8	2009120	TIMER	1
9	9209240	SCREW	4

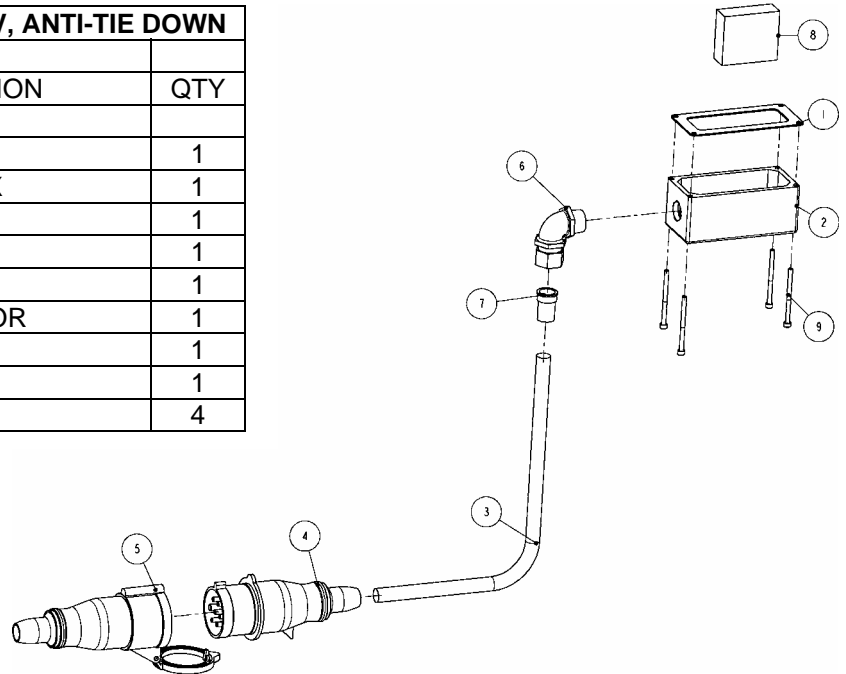
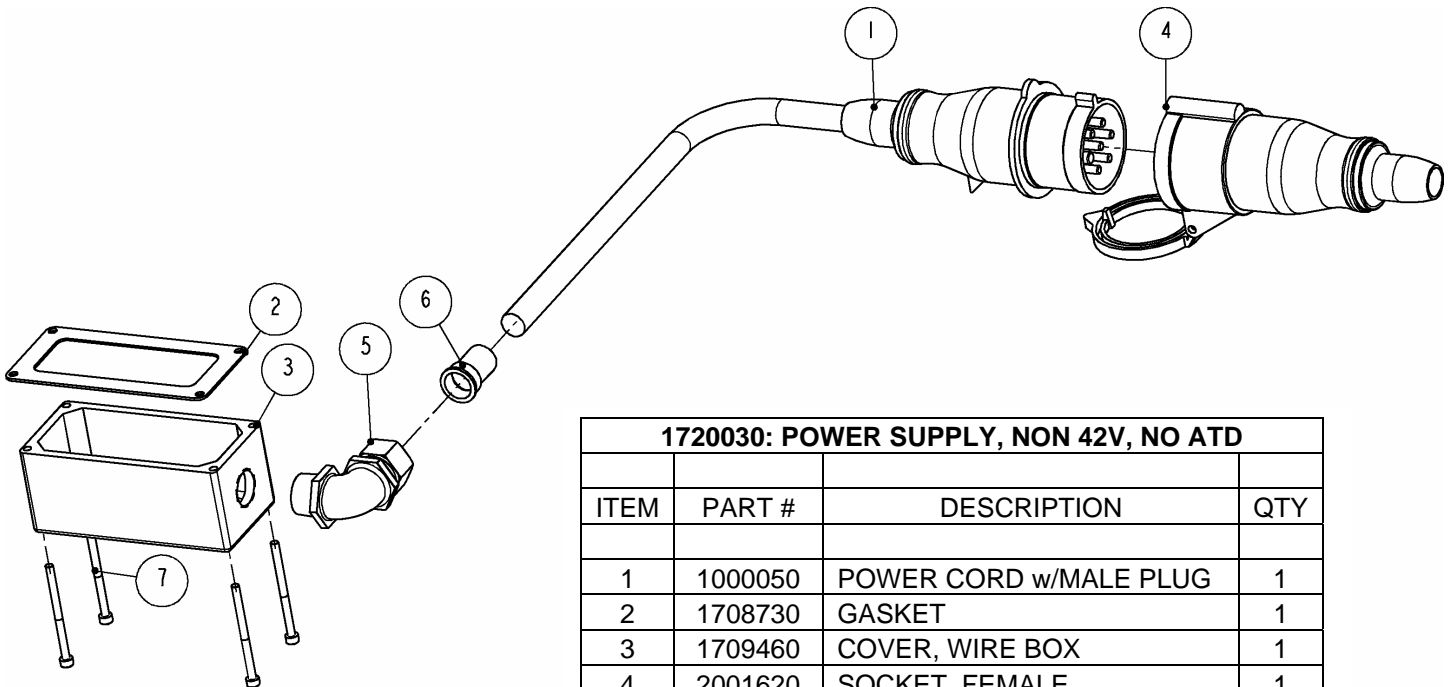


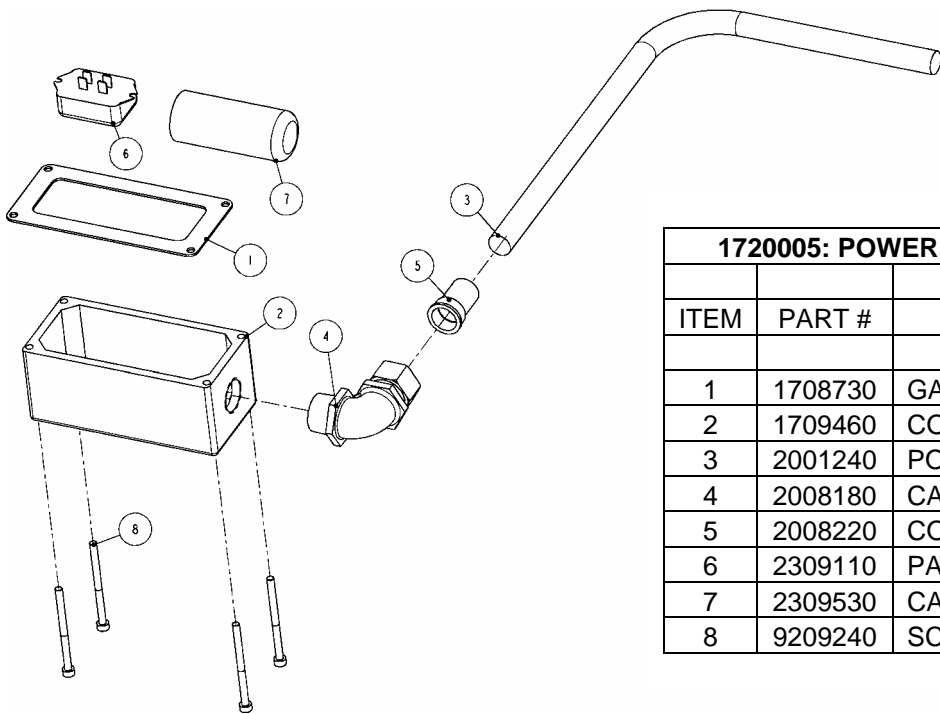
Figure 22 POWER SUPPLY, NON 42V, with ANTI-TIEDOWN



1720030: POWER SUPPLY, NON 42V, NO ATD			
ITEM	PART #	DESCRIPTION	QTY
1	1000050	POWER CORD w/MALE PLUG	1
2	1708730	GASKET	1
3	1709460	COVER, WIRE BOX	1
4	2001620	SOCKET, FEMALE	1
5	2008180	CABLE CONNECTOR	1
6	2008220	CORD GRIP	1
7	9209240	SCREW	4

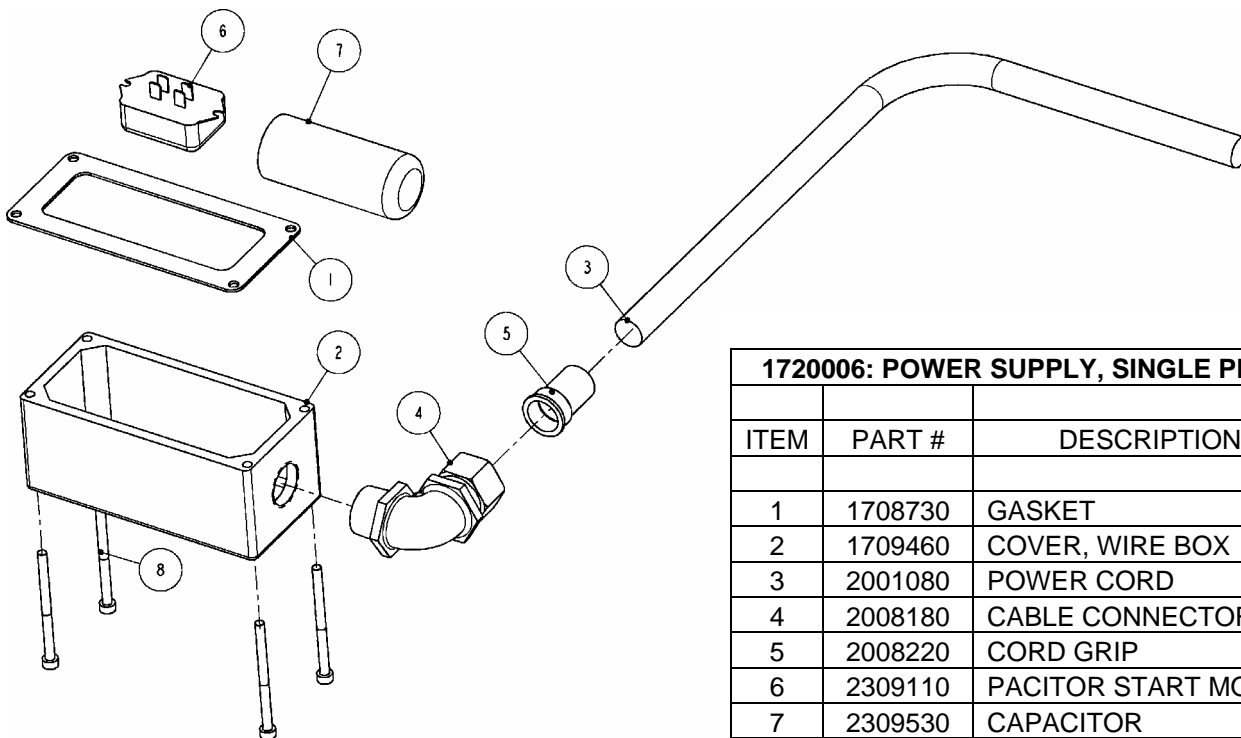
POWER CORD 1000050: POWER CORD 20FT LONG (2001240) + MALE PLUG (2001610)

Figure 23 POWER SUPPLY, NON 42V, without ANTI-TIEDOWN



1720005: POWER SUPPLY, SINGLE PHASE 115V			
ITEM	PART #	DESCRIPTION	QTY
1	1708730	GASKET	1
2	1709460	COVER, WIRE BOX	1
3	2001240	POWER CORD	1
4	2008180	CABLE CONNECTOR	1
5	2008220	CORD GRIP	1
6	2309110	PACITOR START MOTOR	1
7	2309530	CAPACITOR	1
8	9209240	SCREW	4

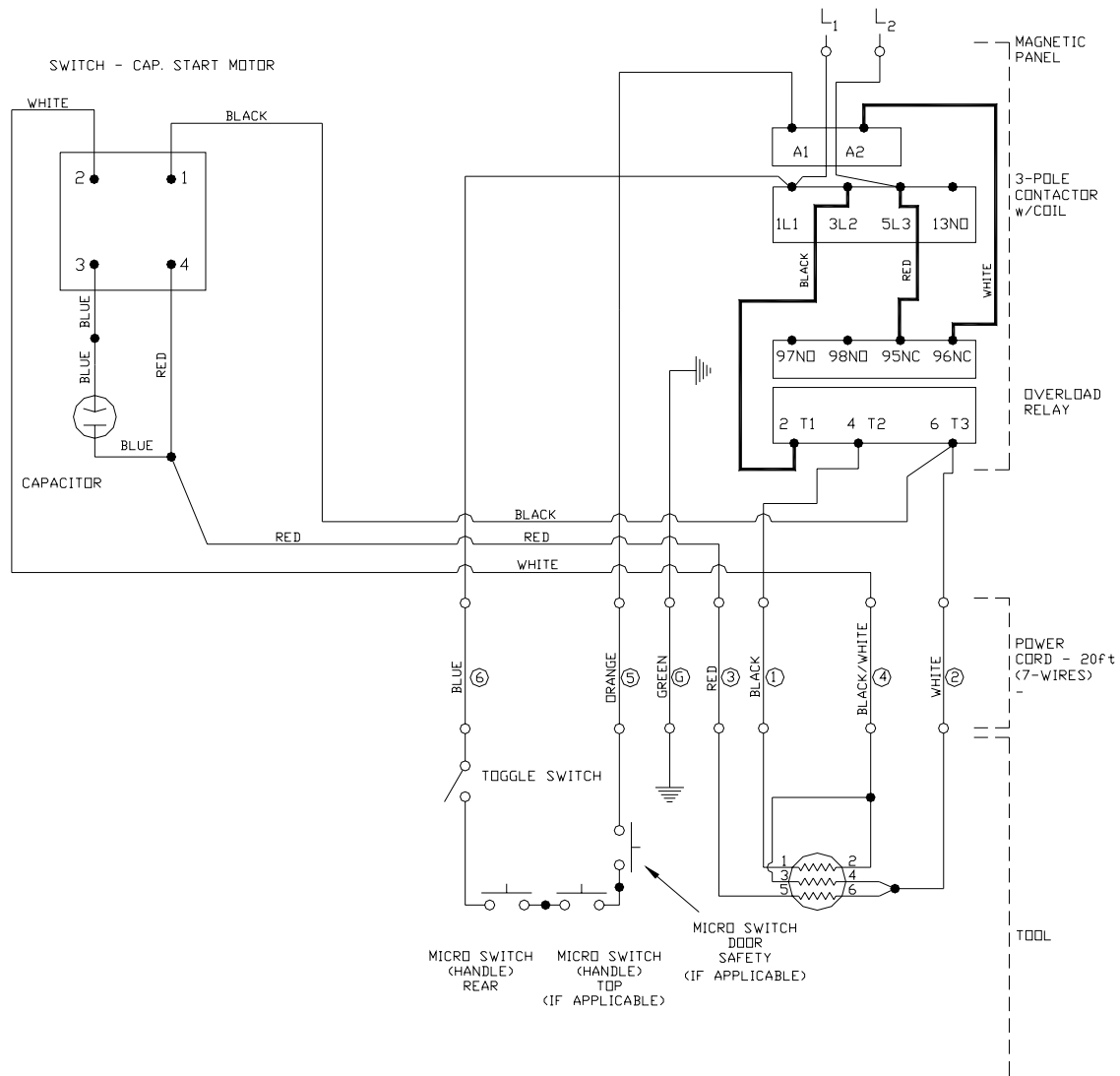
Figure 24 POWER SUPPLY, SINGLE PHASE, 115V



1720006: POWER SUPPLY, SINGLE PHASE 230V			
ITEM	PART #	DESCRIPTION	QTY
1	1708730	GASKET	1
2	1709460	COVER, WIRE BOX	1
3	2001080	POWER CORD	1
4	2008180	CABLE CONNECTOR	1
5	2008220	CORD GRIP	1
6	2309110	PACITOR START MOTOR	1
7	2309530	CAPACITOR	1
8	9209240	SCREW	4

Figure 25 POWER SUPPLY, SINGLE PHASE, 230V

WIRING DIAGRAMS



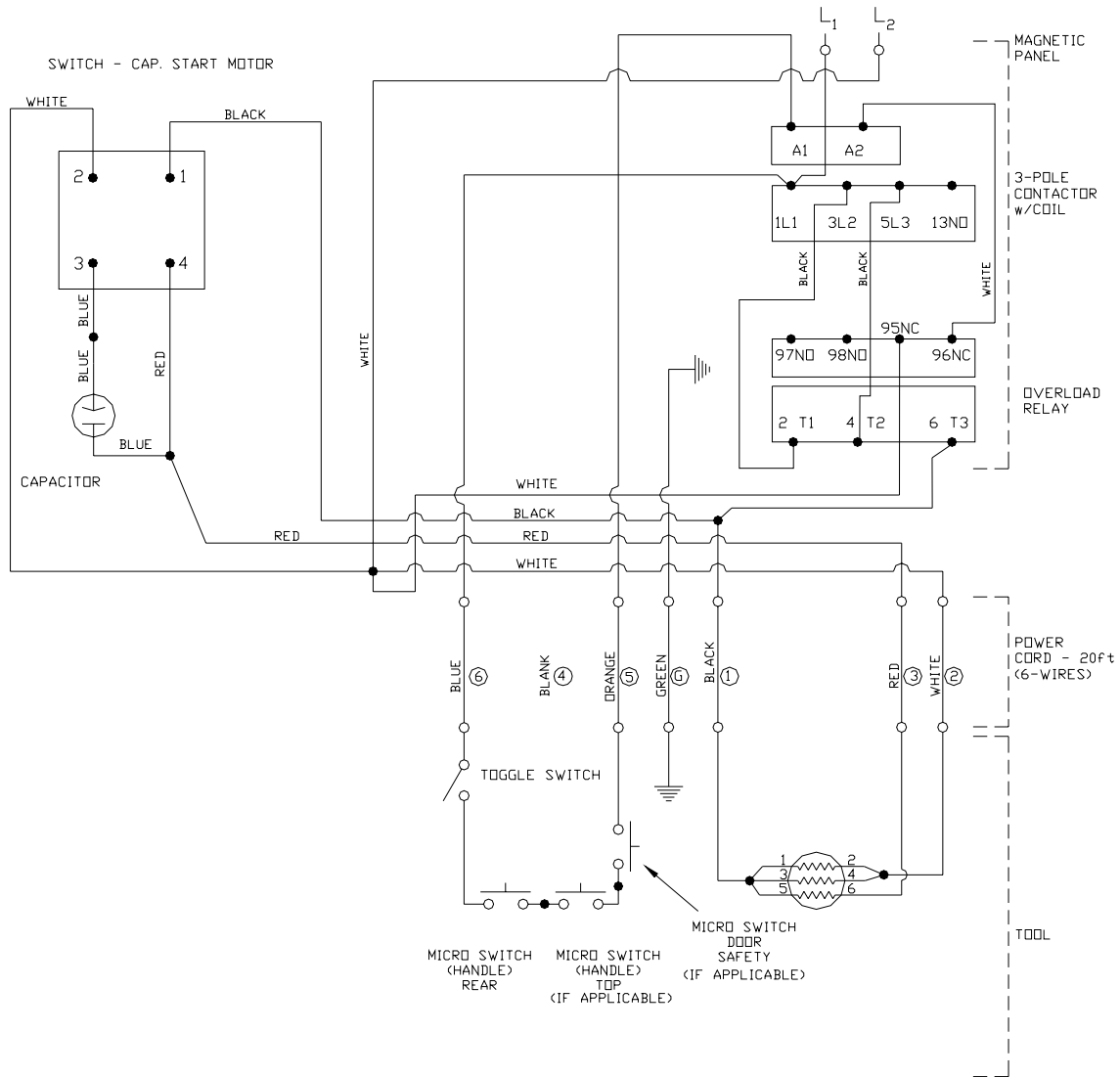
SINGLE PHASE – 230V			
CONTROL VOLTAGE	MOTOR OPTION	3-POLE CONTACTOR	OVERLOAD RELAY
220V	MOTOR 230V, 60HZ, 10AMPS, 2HP	2020032	2309160

NOTES:

1. DO NOT ATTEMPT OR MAKE REPAIRS ON THE MACHINE WHILE POWER IS ON.
2. ALL ELECTRICAL WORK MUST BE PERFORMED BY A QUALIFIED ELECTRICIAN.
3. THE CAPACITOR AND THE SWITCH – CAP. START MOTOR ARE MOUNTED INSIDE THE MAGNETIC PANEL BOX.
4. THE ELECTRICAL DIAGRAM SHOWS THE MACHINE IN THE “OFF” POSITION.
5. MOTOR #7 LEAD IS UNUSED AND SHOULD BE INSULATED AND TAPED SEPARATELY.
6. THE GROUND WIRE (GREEN) OF THE POWER CABLE IS CONNECTED TO THE FRAME OF THE MACHINE.
7. TO REVERSE DIRECTION, REVERSE MOTOR WIRES #5 AND #6.

Figure 26 WIRING DIAGRAM – SINGLE PHASE – 230V

KENTMASTER MFG. CO., INC. 1801 SOUTH MOUNTAIN AVE., MONROVIA, CALIFORNIA 91016 UNITED STATES OF AMERICA
 ☎ TELEPHONE: (626) 359-8888 FAX: (626) 303-5151

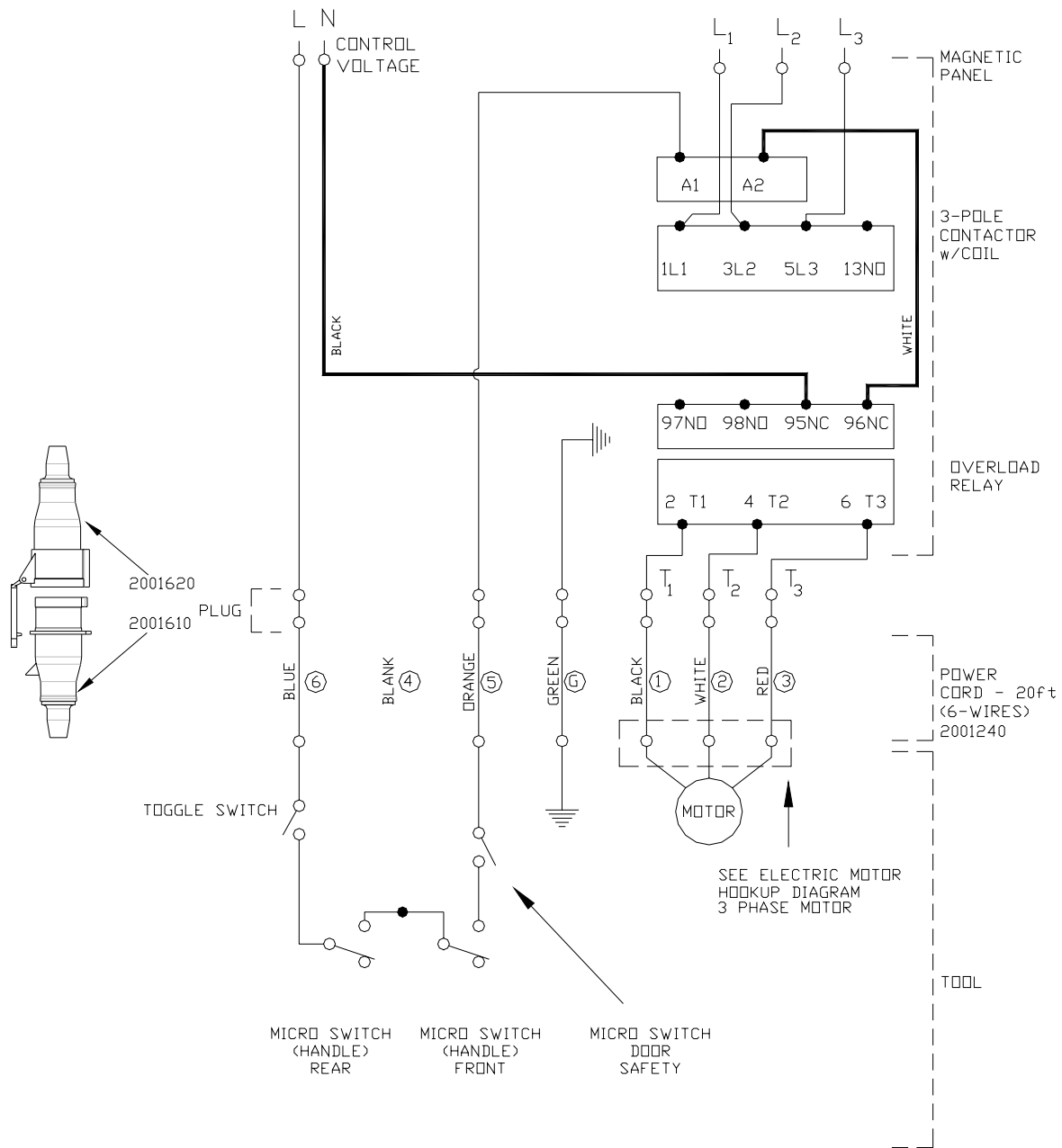


SINGLE PHASE – 115V			
CONTROL VOLTAGE	MOTOR OPTION	3-POLE CONTACTOR	OVERLOAD RELAY
115V	MOTOR 115V, 60HZ, 20.0AMPS, 2HP	2020036	2309190

NOTES:

- DO NOT ATTEMPT OR MAKE REPAIRS ON THE MACHINE WHILE POWER IS ON.
- ALL ELECTRICAL WORK MUST BE PERFORMED BY A QUALIFIED ELECTRICIAN.
- THE CAPACITOR AND THE SWITCH – CAP. START MOTOR ARE MOUNTED INSIDE THE MAGNETIC PANEL BOX.
- THE ELECTRICAL DIAGRAM SHOWS THE MACHINE IN THE “OFF” POSITION.
- MOTOR #7 LEAD IS UNUSED AND SHOULD BE INSULATED AND TAPED SEPARATELY.
- THE GROUND WIRE (GREEN) OF THE POWER CABLE IS CONNECTED TO THE FRAME OF THE MACHINE.
- TO REVERSE DIRECTION, REVERSE MOTOR WIRES #5 AND #6.

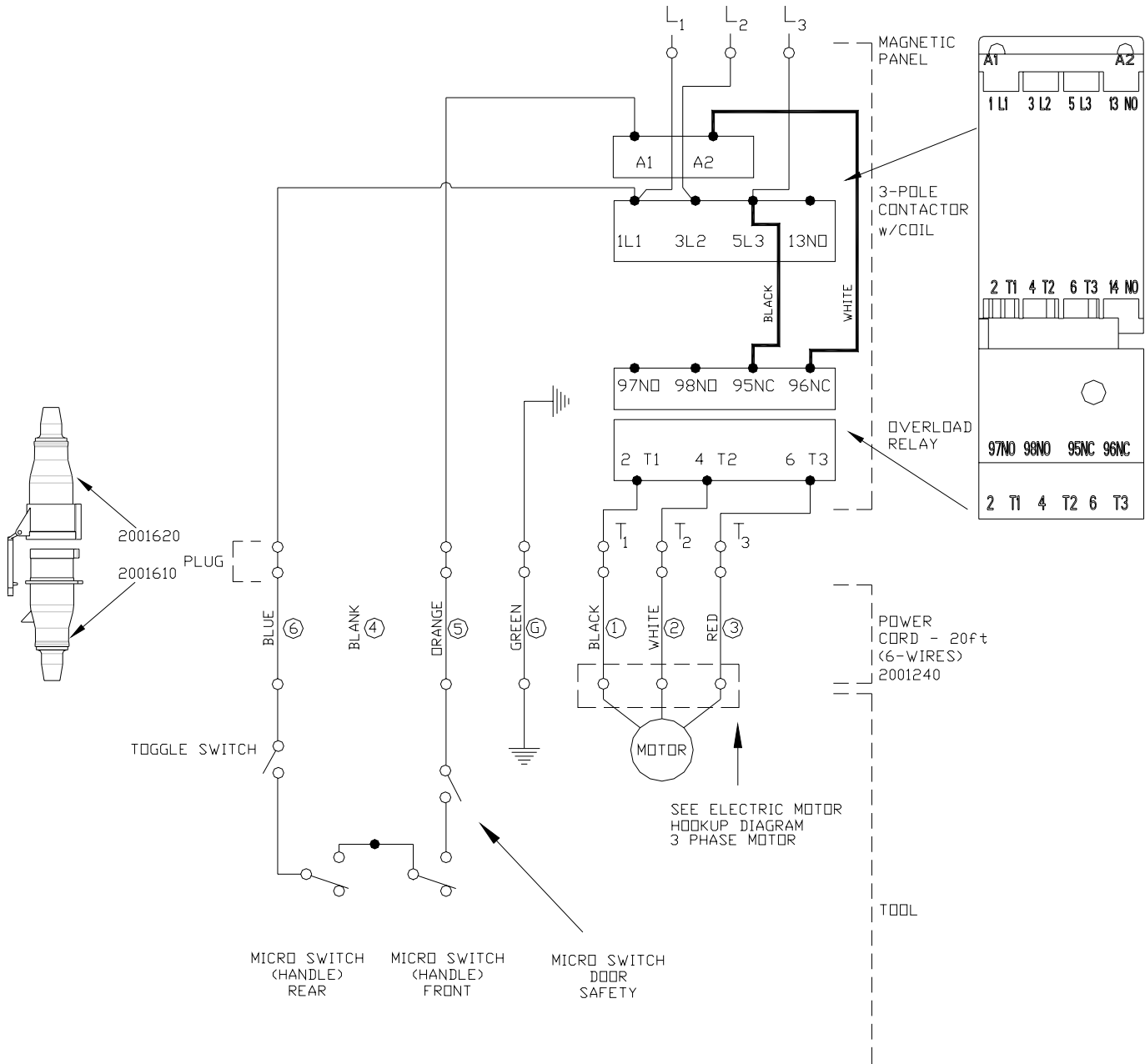
Figure 27 WIRING DIAGRAM – SINGLE PHASE – 115V



1. DO NOT ATTEMPT OR MAKE REPAIRS ON THE MACHINE WHILE POWER IS ON.
2. ALL ELECTRICAL WORK MUST BE PERFORMED BY A QUALIFIED ELECTRICIAN.
3. THE ELECTRICAL DIAGRAM SHOWS THE MACHINE IN THE "OFF" POSITION.

To obtain the correct Kentmaster part number for 3-pole contactor and overload relay, please contact the Kentmaster representative.

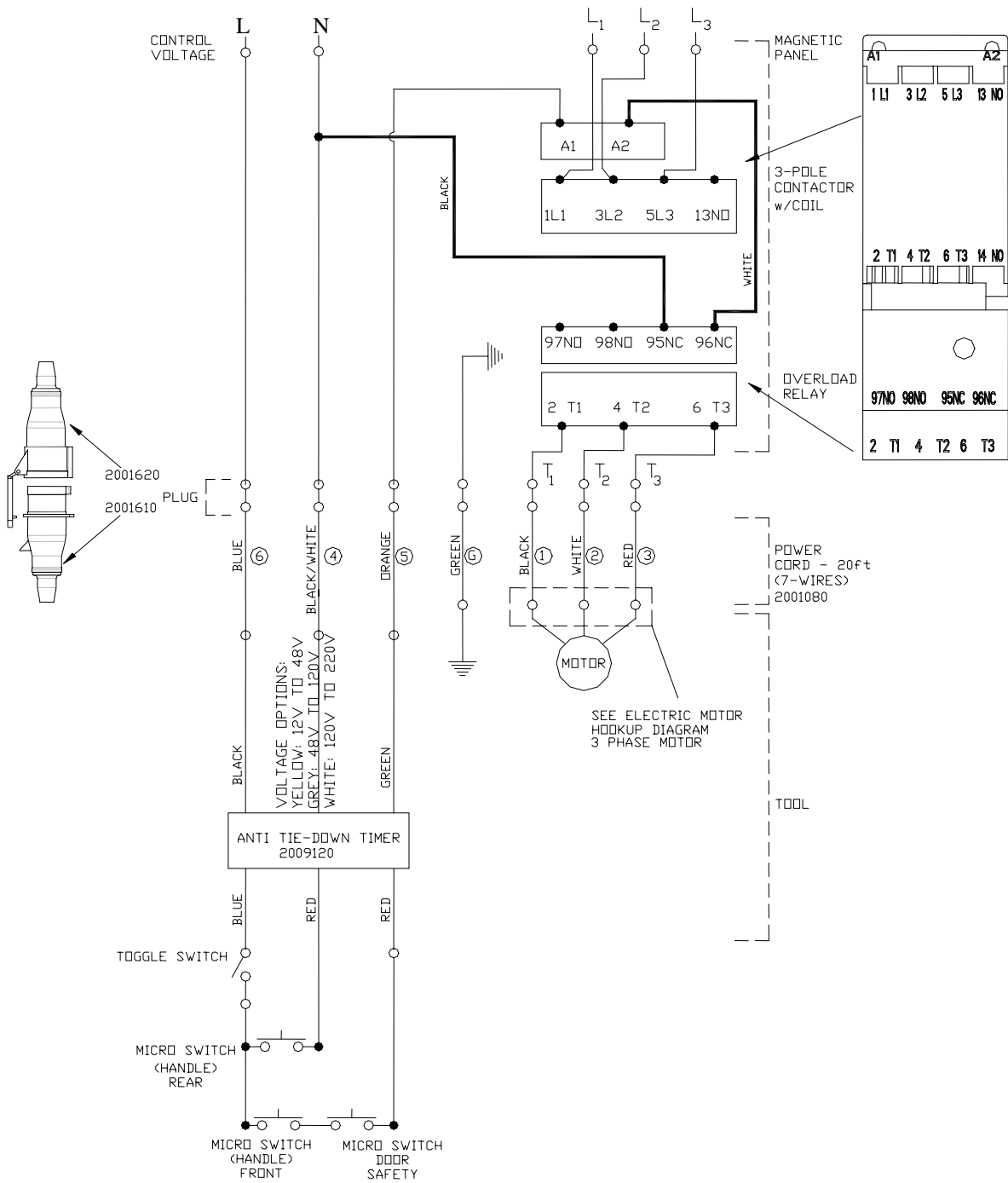
Figure 28 WIRING DIAGRAM – 3 PHASE – DIFFERENT CONTROL AND MOTOR VOLTAGE – without Anti-Tie Down



1. DO NOT ATTEMPT OR MAKE REPAIRS ON THE MACHINE WHILE POWER IS ON.
2. ALL ELECTRICAL WORK MUST BE PERFORMED BY A QUALIFIED ELECTRICIAN.
3. THE ELECTRICAL DIAGRAM SHOWS THE MACHINE IN THE "OFF" POSITION.

To obtain the correct Kentmaster part number for 3-pole contactor and overload relay, please contact the Kentmaster representative.

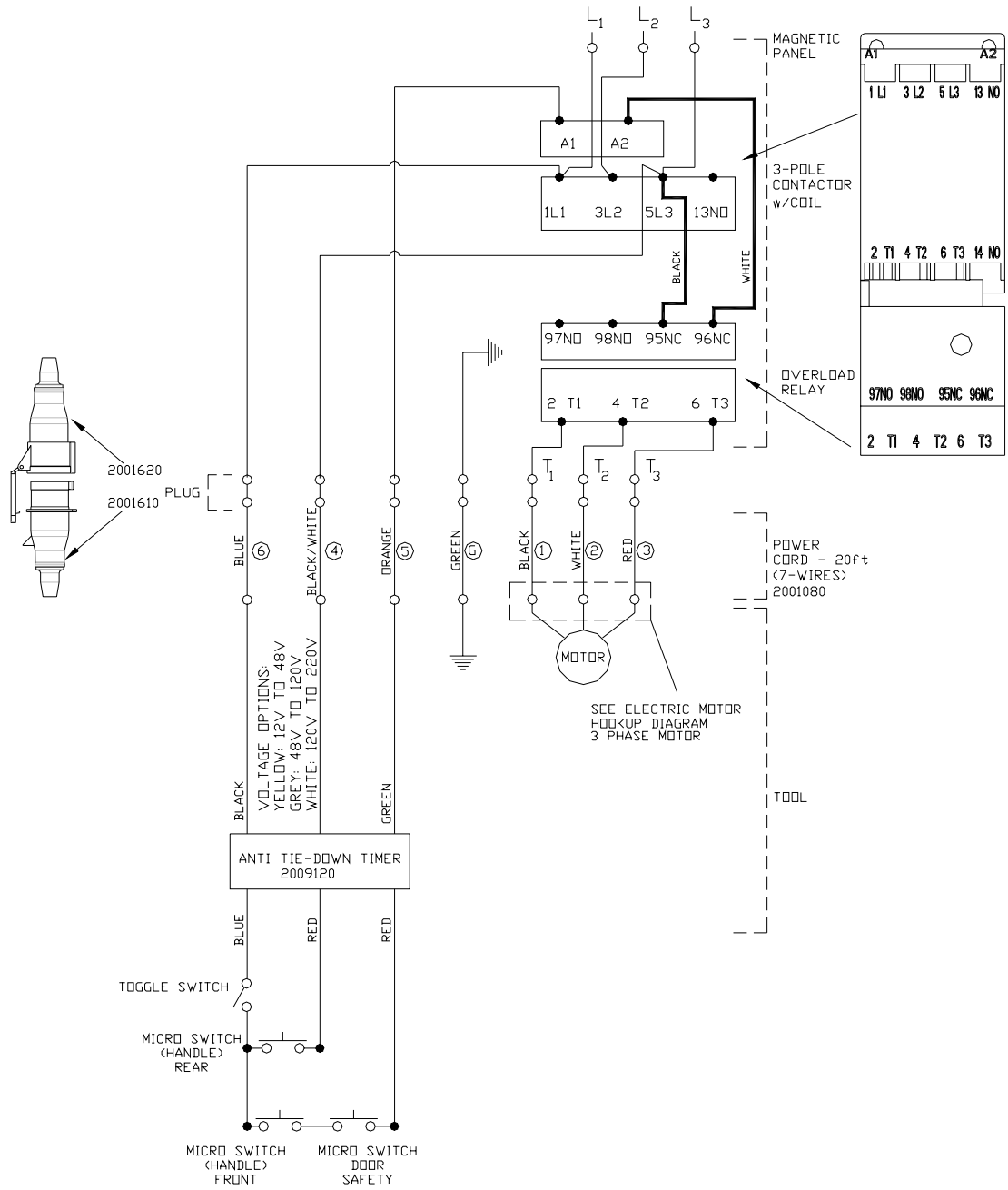
Figure 29 WIRING DIAGRAM – 3 PHASE – SAME CONTROL AND MOTOR VOLTAGE –without Anti-Tie Down



1. DO NOT ATTEMPT OR MAKE REPAIRS ON THE MACHINE WHILE POWER IS ON.
2. ALL ELECTRICAL WORK MUST BE PERFORMED BY A QUALIFIED ELECTRICIAN.
3. THE ELECTRICAL DIAGRAM SHOWS THE MACHINE IN THE "OFF" POSITION.

To obtain the correct Kentmaster part number for 3-pole contactor and overload relay, please contact the Kentmaster representative.

Figure 30 WIRING DIAGRAM – 3 PHASE – DIFFERENT CONTROL AND MOTOR VOLTAGE – with Anti-Tie Down



1. DO NOT ATTEMPT OR MAKE REPAIRS ON THE MACHINE WHILE POWER IS ON.
2. ALL ELECTRICAL WORK MUST BE PERFORMED BY A QUALIFIED ELECTRICIAN.
3. THE ELECTRICAL DIAGRAM SHOWS THE MACHINE IN THE "OFF" POSITION.

To obtain the correct Kentmaster part number for 3-phase contactor and overload relay, please contact the Kentmaster representative.

Figure 31 WIRING DIAGRAM – 3 PHASE – SAME CONTROL/TRIGGER AND MOTOR VOLTAGE with Anti-Tie Down

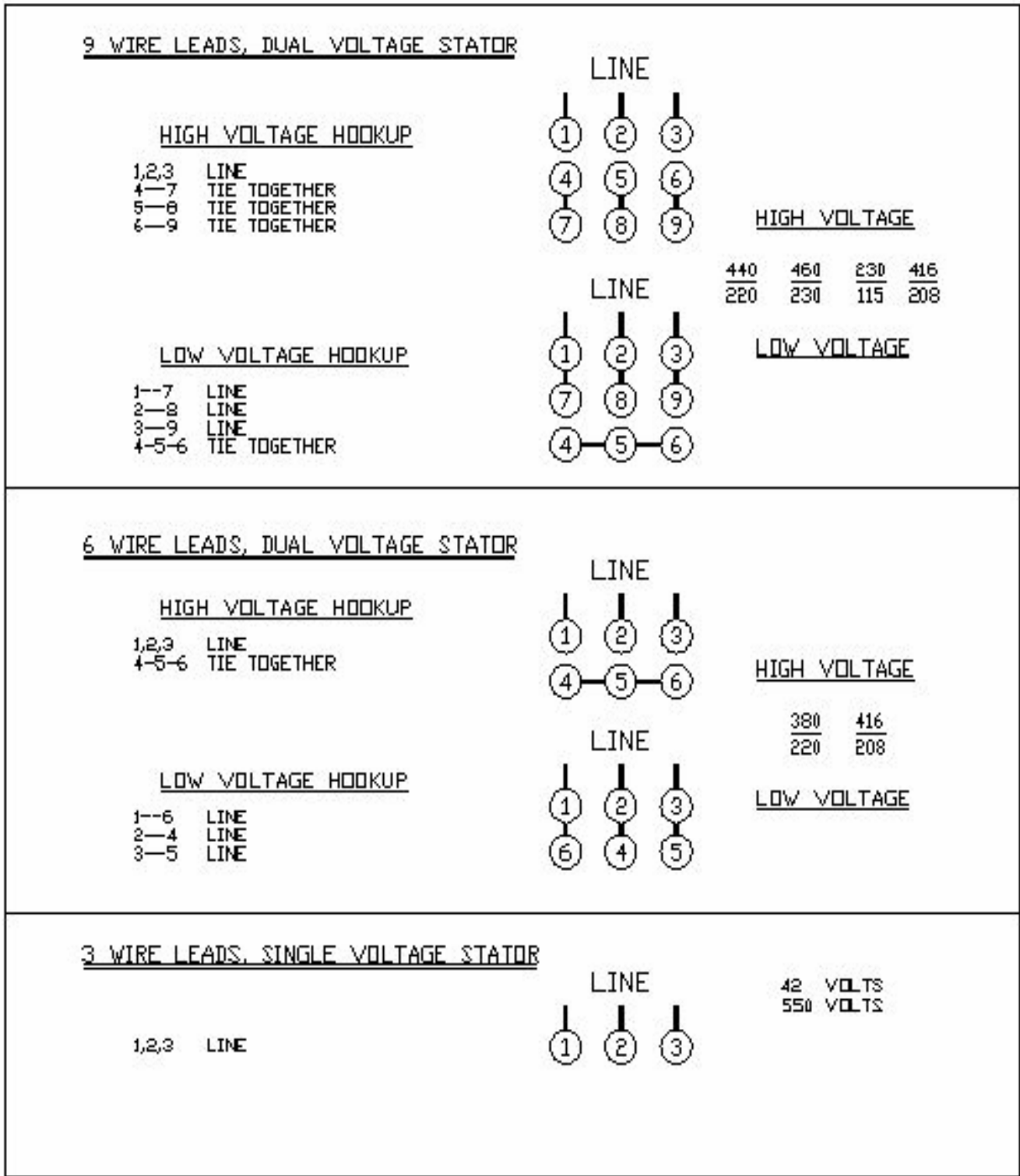
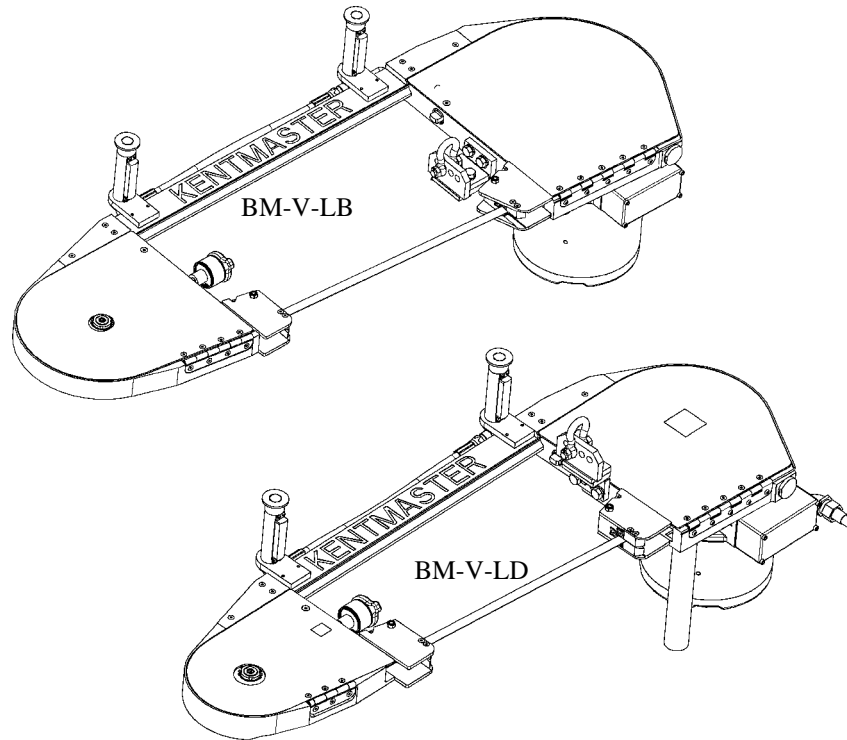


Figure 32 ELECTRIC MOTOR LEAD HOOKUP DIAGRAM 3 PHASE MOTOR

[ENGLISH]

GENERAL INFORMATION



MODELS

BM-V-LB LOIN DROPPER (1740000)

BM-V-LD LOIN DROPPER (1708070)

SERVICE CENTERS

KENTMASTER LTD. (U.K)
 16 AVONBANK INDUSTRIAL CENTRE
 WEST TOWN ROAD
 AVONMOUTH - BRISTOL BS11 9DE
 UNITED KINGDOM

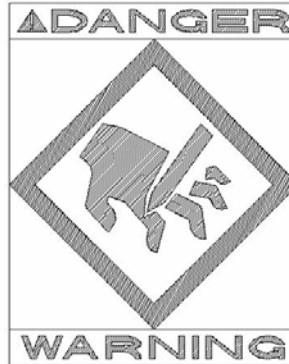
☎ TELEPHONE: ++ 44- (0) 117- 9235035
 FAX: ++ 44- (0) 117- 9829010

KENTMASTER MFG. CO., INC.
 1801 SOUTH MOUNTAIN AVE.
 MONROVIA, CALIFORNIA 91016
 UNITED STATES OF AMERICA

☎ TELEPHONE: (626) 359-8888
 FAX: (626) 303-5151

NOTICE TO EMPLOYER AND PURCHASER OF TOOL
NOTICE TO SAFETY DIRECTOR

You have purchased a powerful tool that, if misused, can cause severe injury and harm to your employees. You must instruct your employees in the safe and proper use of this tool and to follow the safety procedures and instructions that have been supplied by the manufacturer of this tool. Please follow the following instructions.



1. Instruct tool operators to test the tool each day before using it to be sure it does not malfunction. Remove and repair any tool that malfunctions.
2. Instruct tool operators to immediately stop using a tool that malfunctions or is defective.
3. Instruct personnel to immediately remove all tools that malfunction. Be sure to disconnect tool from power supply.
4. Instruct all personnel to stay clear of tool, and not to stand or walk in front of, or next to tool when in use.
5. Point out to all personnel the dangers related to the misuse of tool and the importance of following safety procedures and instructions.
6. Do not make, or allow others to make, alterations or modifications to this tool. Replace all lost or illegible labels.
7. Follow all safety, installation and maintenance instructions provided with this tool. Establish proper safety procedures in accordance with local and national requirements to prevent accidental energizing of tool that can cause injuries.
8. If this tool is sold or change in ownership takes place, you must provide the new owner all safety instructions, notices and maintenance instructions you were originally provided. You can obtain additional copies of the instructions from Kentmaster, free of charge upon request.
9. Give copies of instructions to:
 - (A) Tool Operators**
 - (B) Maintenance Supervisor**
 - (C) Clean-up Supervisor**



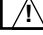
GENERAL INFORMATION

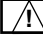

COVERING: SAFETY PRECAUTIONS AND PLACING INTO SERVICE
ELECTRICAL POWERED LOIN DROPPER

**READ THIS MANUAL CAREFULLY BEFORE INSTALLING, OPERATING OR SERVICING
THIS TOOL**

IT IS THE RESPONSIBILITY OF THE EMPLOYER TO PLACE THIS INFORMATION INTO THE HANDS OF THE OPERATOR.

PLACING INTO SERVICE

- | | |
|--|---|
|  WARNING | = Hazards or unsafe practices which could result in severe personal injury, death or substantial property damage. |
|  CAUTION | = Hazards or unsafe practices which could result in minor personal injury, product or property damage. |
|  NOTICE | = Important installation, operation or maintenance information. |

- | | |
|--|---|
|  WARNING | Installation, adjustment repair and maintenance of this tool must be made by trained and qualified personnel. |
|  WARNING | Always disconnect power supply from tool before: <ul style="list-style-type: none"> (A) Installing or removing blade from tool. (B) Making repairs or adjustments to the tool. (C) performing maintenance or cleanup work. |

INSTALLATION INSTRUCTIONS

 **WARNING** **ALL ELECTRICAL WIRING MUST BE DONE BY A LICENSED ELECTRICIAN IN ACCORDANCE WITH THE NATIONAL, STATE AND LOCAL ELECTRICAL CODES. (REFER TO NAMEPLATE ON TOOL FOR PROPER POWER CONFIGURATION).**

1. A BALANCER IS REQUIRED FOR OPERATION AND USE OF THIS TOOL. WEIGHT OF TOOL MUST FALL WITHIN WEIGHT RANGE OF BALANCER. "AIR-BALANCERS" WHICH OPERATE ON COMPRESSED AIR, ARE HIGHLY RECOMMENDED FOR USE WITH BANDMASTER SAWS. THEY PROVIDE LONG TRAVEL AND VERY SMOOTH, UNIFORM RISE AND FALL. THEY CAN BE INTERFACED WITH THE OPERATION OF THE SAW.
2. INSTALL BALANCER ABOVE WORK AREA. BALANCER MUST HAVE SUFFICIENT VERTICAL TRAVEL SO OPERATOR CAN REACH ENTIRE WORK AREA WITH TOOL WITHOUT STRAIN.
3. ADJUST BALANCER ACCORDING TO THE OPERATOR'S PREFERENCE AND COMFORT.
4. TOOL REQUIRES GREASING AFTER EVERY 40 HOURS OF OPERATION. GREASE USING KENTMASTER GREASE (PART NO. 7903070).

 **WARNING** **WE STRONGLY SUGGEST THAT AN ADDITIONAL SAFETY CHAIN BE USED TO CHAIN BALANCER TO OVERHEAD TROLLEY. THIS ADDITIONAL MEASURE OF SAFETY WILL HELP REDUCE INJURIES.**

OPERATING INSTRUCTIONS

⚠ WARNING ONLY TRAINED PERSONNEL ARE TO OPERATE THIS TOOL.

1. HOLD TOOL FIRMLY AT BOTH TRIGGER HANDLES. SQUEEZE TRIGGERS SIMULTANEOUSLY TO ACTIVATE TOOL.
2. START CUT WITH SAW NOSE POINTED UP AT AN ANGLE.
3. LEVEL SAW TO HORIZONTAL POSITION IN LOIN AREA.
4. POINT NOSE OF SAW AT DOWNWARD ANGLE IN CHUCK AND NECK AREA.
5. A BEGINNING SPLITTER CAN MARK BACKFAT OF BEEF WITH A KNIFE TO HELP GUIDE SAW DOWN CENTER OF BACKBONE AND UNTIL OPERATOR IS FAMILIAR WITH SPLITTING PROCEDURE.
6. DO NOT EXERT EXCESSIVE PRESSURE. ALLOW TIME FOR THE TOOL TO CUT.
7. PUSH SAW FORWARD SO THAT GUARDS, ITEMS 1 AND 2, FIGURE 1, RIDE AGAINST BEEF. THIS HELPS STEADY SAW IN CUT AND HELPS ELIMINATE BLADE JUMPING AND CHATTERING.

MAINTENANCE

⚠ WARNING ONLY TRAINED AND QUALIFIED PERSONNEL ARE TO PERFORM MAINTENANCE AND SERVICE TO THIS TOOL.

1. FOLLOW PROCEDURE NO. 4 OF INSTALLATION INSTRUCTIONS.

BLADE REMOVAL AND CLEANING.

⚠ WARNING ALWAYS DISCONNECT POWER SUPPLY FROM TOOL BEFORE INSTALLING OR REMOVING BLADE FROM TOOL.

⚠ WARNING ALWAYS WEAR WIRE MESH GLOVES WHEN INSTALLING OR REMOVING BLADES FROM TOOL.

1. REMOVE PAPER WRAPPER FROM BLADE.
2. OPEN COVERS, FIGURE 1, ITEMS 3 AND 4.
3. INSTALL TORQUE WRENCH INTO SCREW, FIGURE 1, ITEM 5, AND TURN COUNTER-CLOCKWISE (CCW). THIS ALLOWS TAKE-UP WHEEL AND SLIDE, ITEM 7 AND 8, TO RETRACT.
4. SLIDE TAKE-UP WHEEL TO RIGHT.
5. HOLD BLADE, WITH TEETH FACING AWAY FROM YOU, AND INSTALL INTO SLOT OF BEAM, CONTINUING AROUND AND OVER THE TAKE-UP AND DRIVE WHEELS.
6. TURN TORQUE WRENCH CLOCKWISE (CW) TO ELIMINATE BLADE SLACK AND TIGHTEN TAKE-UP WHEEL AGAINST BLADE (TORQUE WRENCH IS PRESET AT FACTORY AND WILL SLIP AFTER PLACING PROPER TENSION ON BLADE).
7. TWIST BLADE 90 DEGREES AT BLADE GUARDS AND INSERT BLADE INTO SLOTS WITH TEETH FACING DOWNWARD.
8. TURN DRIVE WHEEL, ITEM 9, SLOWLY BY HAND, ONE OR TWO TURNS TO CHECK TRACKING OF BLADE ON WHEELS.
9. RETORQUE AGAIN UNTIL TORQUE WRENCH SLIPS.

SERVICE

1. KEEP GOOD RECORDS OF ALL SERVICE ACTIVITY AND INCLUDE TOOL IN YOUR PREVENTIVE MAINTENANCE PROGRAM.
2. USE ONLY GENUINE KENTMASTER REPLACEMENT PARTS TO ASSURE PROPER PERFORMANCE OF TOOL.
3. CONTACT THE KENTMASTER SUPPLIER NEAREST YOU FOR PARTS AND CUSTOMER SERVICE INFORMATION.

DECLARATION OF CONFORMITY**DECLARATION OF CONFORMITY**DECLARATION DE CONFORMITE -DECLARACION DE CONFORMIDAD- ERKLARUNG BEZUGLICH EINHALTUNG DER VORSCHRIFTEN
DICHIARAZIONE DI CONFORMITA . CONFORMITEITSVERKLARING**MANUFACTURED BY:**FABRIQUE PAR:
FABRICADA POR:
HERGESTELLT VON:
FABBRICATO DA:
VERVAARDIGD DOOR:**KENTMASTER MFG CO., INC.****1801 SOUTH MOUNTAIN AVE.
MONROVIA, CALIFORNIA 91016
UNITED STATES OF AMERICA
TELEPHONE (626) 359-8888 FAX (626) 303-5151****TYPE / SERIES: LOIN DROPPER**TYPE / SERIE:
TIPO / SERIE:
TYP / SERIE:
TIPO / SERIE:
TYPE / SERIE:**MODEL: BM-V-LD, BM-V-LB**MODELE:
MODELO:
MODELL:
MODELLO:
MODEL:**SERIAL NO. RANGE: XXXXX**

N SERIE: • GAMA DE No. DE SERIE: • SERIEN-NR.-BEREICH: • NUMERI DI SERIE: • SERIENUMMERS:

This product complies with the following European Community Directives:Ce produit est conforme aux directives de la Communauté européenne suivantes:
Este producto cumple con las siguientes Directrices de la Comunidad Europea:
Dieses Produkt erfüllt die folgenden Vorschriften der Europäischen Gemeinschaft:
Questo prodotto è conforme alle seguenti direttive CEE:
Dit produkt voldoet aan de volgende EG-richtlijnen:**89/392/EEC, 91/368/EEC, 93/44/EEC, 93/68/EEC****The following Standards were used to verify compliance with the Directives:**Les normes suivantes ont été utilisées pour vérifier la conformité avec les Directives:
Las siguientes Normas se usaron para verificar el cumplimiento de las Directrices:
Folgende Normen wurden angewandt, um Erfüllung der Vorschriften zu bestätigen:
Per verificare la conformità del prodotto alle direttive sono stati usati i seguenti standard:
De volgende normen zijn gebruikt om naleving van de richtlijnen te bevestigen:**EN 292****Approved by:** _____RALPH KARUBIAN MONROVIA, CA. U.S.A
(Engineering Manager) (Directeur technique) (gerente de ingenieria) (verantwortlicher Konstruktionsleiter) (Responsabile tecnico) (ondersteunend technisch manager)**Date:** AUG - 1 - 1995

Kentmaster Worldwide Location

Kentmaster Equipment (Aust) PTY.LTD.

Unit 2,24 Central Court
Browns Plains Qld. 4118
Australia

Telephone: (07) 3806-8400

Fax: (07) 3806-7933

Australia@Kentmaster.com

Kentmaster do Brasil, Ltda.

Av. Dr. Joao Teodoro No. 805
Bairro De Vila Rezende
13405-240 Piracicaba, SP,
Brazil

Telephone #1: (019) 3 413 3113

Telephone #2: (019)983-4973

Fax: (019) 3 413 3113

Brazil@Kentmaster.com

Kentmaster (IRL) LTD.

Benamore, Dublin Road.
Roscrea,
CO, Tipperary,
Ireland

Telephone: (353) 0505-23292

Fax: (353) 0505-23299

Ireland@Kentmaster.com

Kentmaster Equipment (NZ) LTD.

5 Cooper Street
Havelock North
New Zealand

Telephone #1: (64) 6 8777 857

Telephone #2: 0800 KENTMASTER

Fax: (64) 6 8777 858

NewZealand@Kentmaster.com

Kentmaster South Africa (PTY) LTD.

Johannesburg - S. Africa
Unit 54 Sunnyrock Park
Sunrock Close, Germiston
South Africa

Telephone: (27) 11-455-3748

Fax: (27) 11-455-3749

SouthAfrica@Kentmaster.com

Kentmaster (UK) LTD.

Unit 16 Avonbank Ind. Centre
West Town Rd, Avonmouth-Bristol,
BS11 9DE
England

Telephone: (44) 117-923-5035

Fax: (44)-117-932-9010

UK@Kentmaster.com

Kentmaster Mfg. Co., Inc.

1801 South Mountain Ave.
Monrovia, CA, 91016
USA

Telephone #1: (626) 359-8888

Telephone #2: (800) 421-1477

Fax: (626) 303-5151

info@Kentmaster.com

Kentmaster Omaha

4417 South 139th Street
Omaha, NE, 68137
USA

Telephone #1: (402) 896-3355

Telephone #2: (800) 367-3181

Fax: (402) 896-3311

Omaha@Kentmaster.com

INDEX

OPERATING AND SAFETY INSTRUCTIONS	2
OPERATING INSTRUCTIONS	3
MAINTENANCE	3
CLEANING AND STERILIZING SAW	4
WATER CONNECTION	4
TORQUE WRENCH CALIBRATION	4
HANGER	5
TROUBLE SHOOTING HINTS:	6
SERVICE	7
PARTS BOOK	7
MODELS MAIN ASSEMBLIES	7
TAKE-UP SIDE ASSEMBLY	12
DRIVE SIDE ASSEMBLY	14
BLADE GUIDE ASSEMBLY, TAKE-UP SIDE	19
BLADE GUIDE ASSEMBLY, DRIVE SIDE	21
HANDLES	22
MOTOR ASSEMBLY	23
POWER SUPPLY OPTIONS	26
WIRING DIAGRAMS	29
GENERAL INFORMATION	38
INSTALLATION INSTRUCTIONS	38
OPERATING INSTRUCTIONS	39
MAINTENANCE	39
SERVICE	39
DECLARATION OF CONFORMITY	40
Kentmaster Worldwide Location	41
INDEX	42
FIGURES - INDEX	43

FIGURES - INDEX

Figure 1 BM-V-LD.....	5
Figure 2 MODELS BM-V-LD	8
Figure 3 BOM FOR MODELS BM-V-LD.....	9
Figure 4 MODEL BM-V-LB.....	10
Figure 5 BOM FOR MODEL BM-V-LB.....	11
Figure 6 TAKE-UP SIDE ASSEMBLY.....	12
Figure 7 TAKE-UP SIDE ASSEMBLY BOM.....	13
Figure 8 DRIVE SIDE ASSEMBLY, BM-V-LD.....	14
Figure 9 DRIVE SIDE ASSEMBLY BOM, BM-V-LD.....	15
Figure 10 DRIVE SIDE ASSEMBLY, BM-V-LB.....	16
Figure 11 DRIVE SIDE ASSEMBLY BOM, BM-V-LB.....	17
Figure 12 HANGER ASSEMBLY, BM-V-LD	18
Figure 13 TRANSMISSION OVERVIEW	18
Figure 14 BLADE GUIDE ASSEMBLY, FRONT (BM-V-LD & -LB).....	19
Figure 15 BLADE GUIDE ASSEMBLY, DRIVE SIDE (BM-V-LD & LB).....	21
Figure 16 HANDLE ASSEMBLY, BM-V-LD & LB	22
Figure 17 2HP MOTOR OPTIONS.....	23
Figure 18 3HP MOTOR OPTIONS.....	24
Figure 19 5HP MOTOR OPTIONS.....	25
Figure 20 POWER SUPPLY, 42V, with ANTI-TIEDOWN.....	26
Figure 21 POWER SUPPLY, 42V, without ANTI-TIEDOWN.....	26
Figure 22 POWER SUPPLY, NON 42V, with ANTI-TIEDOWN	27
Figure 23 POWER SUPPLY, NON 42V, without ANTI-TIEDOWN	27
Figure 24 POWER SUPPLY, SINGLE PHASE, 115V	28
Figure 25 POWER SUPPLY, SINGLE PHASE, 230V	28
Figure 26 WIRING DIAGRAM – SINGLE PHASE – 230V	29
Figure 27 WIRING DIAGRAM – SINGLE PHASE – 115V	30
Figure 28 WIRING DIAGRAM – 3 PHASE – DIFFERENT CONTROL AND MOTOR VOLTAGE –without Anti-Tie Down.....	31
Figure 29 WIRING DIAGRAM – 3 PHASE – SAME CONTROL AND MOTOR VOLTAGE –without Anti-Tie Down	32
Figure 30 WIRING DIAGRAM – 3 PHASE – DIFFERENT CONTROL AND MOTOR VOLTAGE –with Anti-Tie Down.....	33
Figure 31 WIRING DIAGRAM – 3 PHASE – SAME CONTROL/TRIGGER AND MOTOR VOLTAGE with Anti-Tie Down.....	34
Figure 32 ELECTRIC MOTOR LEAD HOOKUP DIAGRAM 3 PHASE MOTOR	35