

# **OPERATOR'S MANUAL**

**INCLUDING: OPERATION, INSTRUCTION, INSTALLATION, MAINTENANCE AND PARTSBOOK**

---

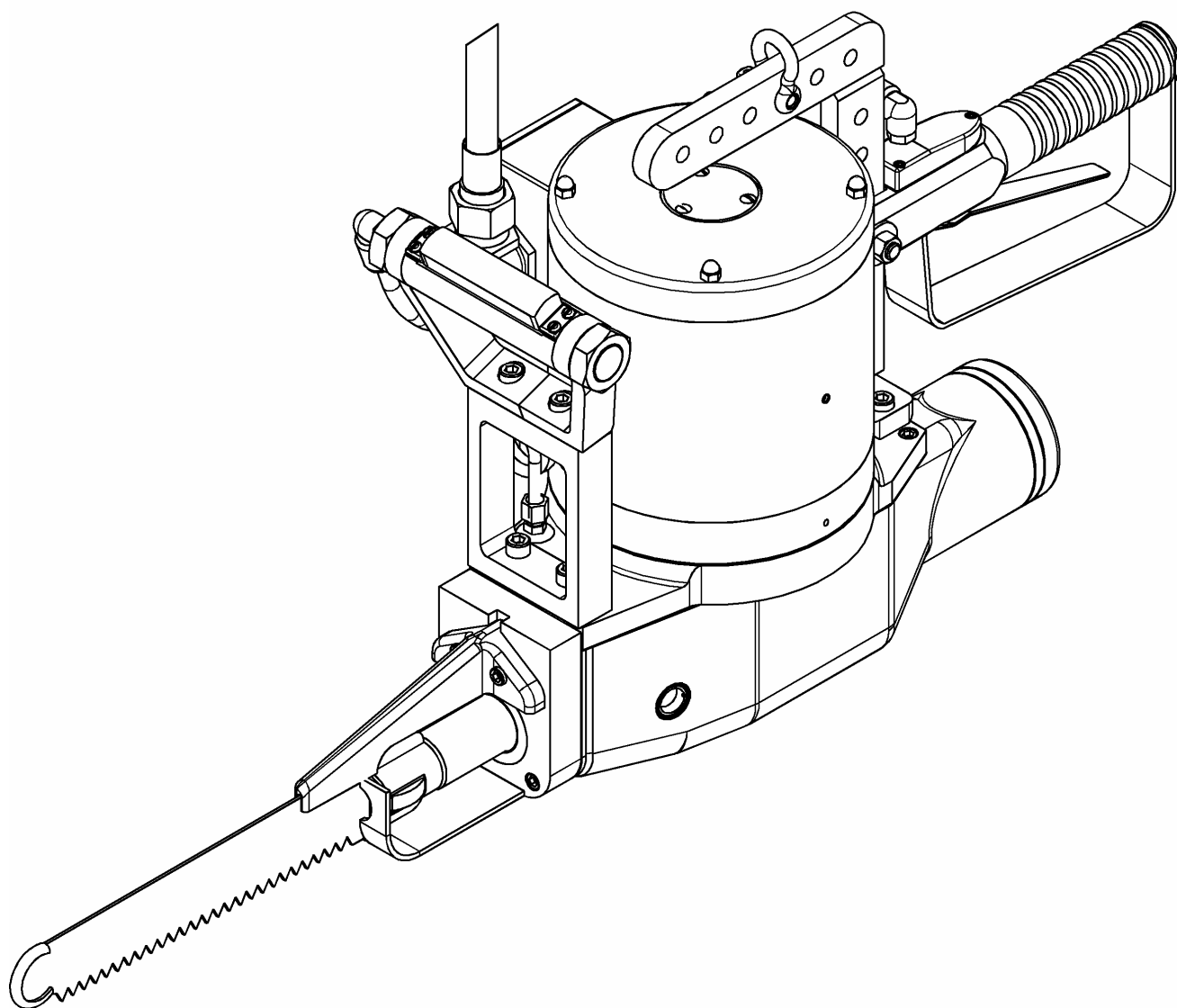
**IMPORTANT: READ THIS MANUAL CAREFULLY BEFORE INSTALLING, OPERATING OR SERVICING THIS TOOL.**




---

## **ELECTRIC BEEF BRISKET SAW "EBB-II"**













### **TOOL DATA**

MODEL: EBB-II  
ASSEMBLY NO.: 1080000  
TYPE: ELECTRICAL OPERATED  
NET WEIGHT: 85.5 LBS (39 KG)  
MOTOR HORSEPOWER: 2HP / 50Hz, 60Hz



 <b>WARNING</b>	= Hazards or unsafe practices which could result in severe personal injury, death or substantial property damage.
 <b>CAUTION</b>	= Hazards or unsafe practices which could result in minor personal injury, product or property damage.
 <b>NOTICE</b>	= Important installation, operation or maintenance information.

## OPERATING AND SAFETY INSTRUCTIONS

-  **WARNING** DO NOT OPERATE THIS TOOL UNTIL YOU HAVE READ AND UNDERSTOOD THE SAFETY INSTRUCTIONS AND OPERATING MANUALS.
-  **WARNING** DO NOT OPERATE THIS TOOL UNTIL YOU HAVE RECEIVED TRAINING IN THE HANDLING, OPERATION AND USE OF THIS TOOL.
-  **WARNING** STOP USING A MALFUNCTIONING OR DEFECTIVE TOOL IMMEDIATELY. REPORT ANY PROBLEMS OR DEFECTS TO YOUR SUPERVISOR FOR REMOVAL OF THE TOOL FROM SERVICE.
-  **WARNING** DO NOT ATTEMPT TO REPAIR THE TOOL YOURSELF.
-  **WARNING** DO NOT ALLOW UNAUTHORIZED PERSONS TO USE TOOL.
-  **WARNING** REMOVE AND DISCONNECT POWER FROM THE TOOL WHEN TOOL IS LEFT UNATTENDED OR IS NOT IN USE.
-  **WARNING** NEVER TIE DOWN, BYPASS, ALTER OR MODIFY THE ACTIVATING SWITCHES OR TRIGGERS OF THIS TOOL.
-  **WARNING** NEVER MAKE ALTERATIONS OR MODIFICATIONS TO THIS TOOL.
-  **WARNING** BE CONSTANTLY AWARE AND ALERT FOR UNSAFE CONDITIONS AND REPORT THEM IMMEDIATELY TO YOUR SUPERVISOR.
-  **WARNING** NEVER PLACE YOUR HAND OR ANY PART OF YOUR BODY IN THE CUTTING PATH OF THE TOOL.
-  **WARNING** NEVER ALLOW ANYONE ELSE TO PLACE THEIR HANDS OR ANY PART OF THEIR BODY IN THE CUTTING PATH OF THE TOOL.
-  **WARNING** DO NOT ACTIVATE CONTROL SWITCHES OR TRIGGERS OF THIS TOOL UNLESS YOU INTEND TO TEST OR OPERATE THIS TOOL.
-  **WARNING** DO NOT USE THIS TOOL FOR ANY PURPOSE OTHER THAN IT'S INTENDED PURPOSE.
-  **CAUTION** WHEN OPERATING THIS TOOL WEAR THE PROTECTIVE GEAR AND SAFETY EQUIPMENT SUPPLIED TO YOU.
-  **WARNING** THE NOISE EMISSION (SOUND PRESSURE LEVEL) AT THE WORKSTATION MAY EXCEED 80 dB (A). EAR AND SOUND PROTECTION GEAR IS REQUIRED.

## OPERATING INSTRUCTIONS

**⚠ WARNING** ONLY TRAINED PERSONNEL ARE TO OPERATE THIS TOOL.

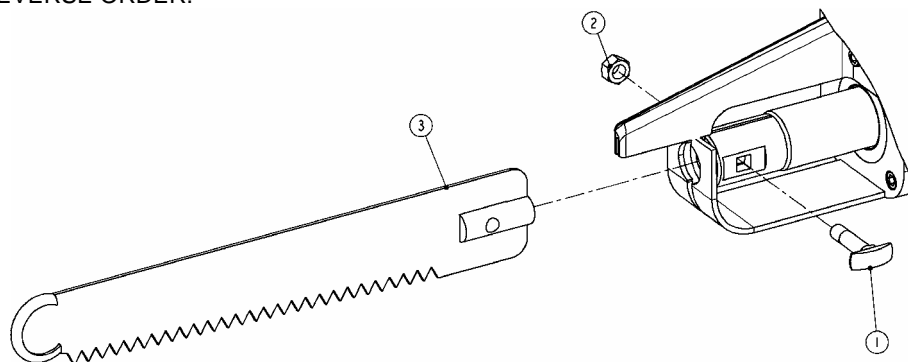
1. TO ENSURE TOOL IS OPERATING PROPERLY, PERFORM FOLLOWING STEPS AT START OF EACH SHIFT:
  - MAKE SURE TOOL MOVES UP AND DOWN FREELY WHILE HANGING FROM BALANCER OVERHEAD.
  - WITH POWER TO TOOL TURNED ON, TEST TRIGGER FOR PROPER OPERATION.
  - DEPRESS EACH TRIGGER SEPARATELY. TOOL SHOULD NOT ACTIVATE. DEPRESS BOTH TRIGGERS. TOOL SHOULD ACTIVATE.
  - IF TOOL HAS "ANTI-TIE DOWN" OPTION, BOTH TRIGGERS MUST BE DEPRESSED SIMULTANEOUSLY FOR TOOL TO ACTIVATE.
2. TO PERFORM WORK, HOLD TOOL FIRMLY AT BOTH HANDLES. SQUEEZE TRIGGERS TO ACTIVATE TOOL.
3. POSITION TOOL AND PERFORM CUTTING OPERATION.

## BLADE REMOVAL AND CLEANING.

**⚠ WARNING** ALWAYS DISCONNECT POWER SUPPLY FROM TOOL BEFORE INSTALLING OR REMOVING BLADE FROM TOOL.

**⚠ WARNING** ALWAYS WEAR WIRE MESH GLOVES WHEN INSTALLING OR REMOVING BLADE FROM TOOL.

1. REMOVE NUT AND BOLT (ITEM NO. 1 AND 2, FIG. NO. 1).
2. REMOVE BLADE (ITEM NO. 3, FIG. NO. 1).
3. CLEAN ALL PARTS REMOVED WITH SOAP AND WATER.
4. SHARPEN OR REPLACE BLADES WHEN NECESSARY.
5. REASSEMBLE IN REVERSE ORDER.



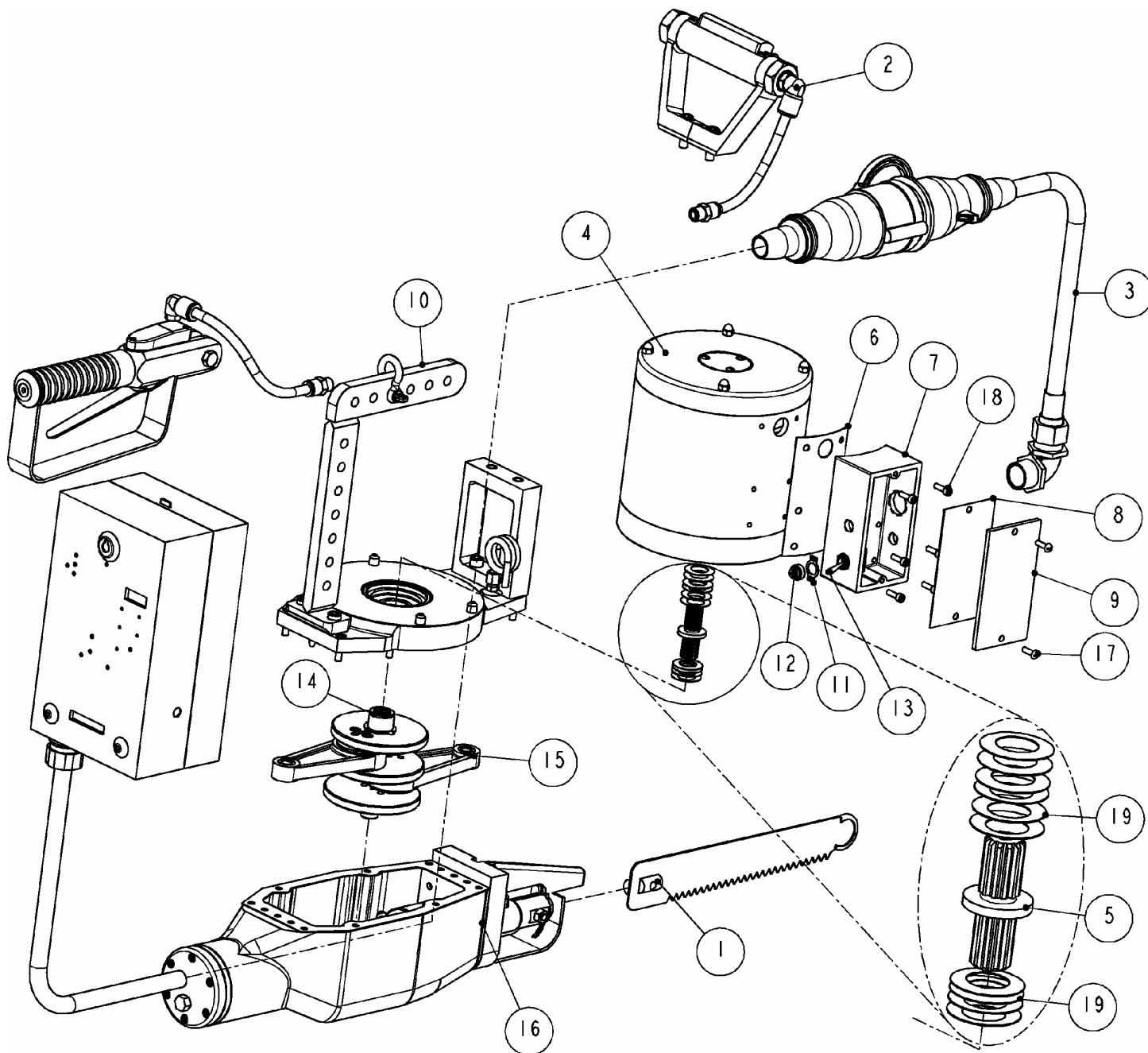
**Figure 1 MODEL EBB-II – BLADE REPLACEMENT**

## SERVICE

1. KEEP GOOD RECORDS OF ALL SERVICE ACTIVITY AND INCLUDE TOOL IN PREVENTIVE MAINTENANCE PROGRAM.
2. USE ONLY GENUINE KENTMASTER REPLACEMENT PARTS TO ASSURE PROPER PERFORMANCE OF TOOL.
3. CONTACT THE KENTMASTER SUPPLIER NEAREST YOU FOR PARTS AND CUSTOMER SERVICE INFORMATION.



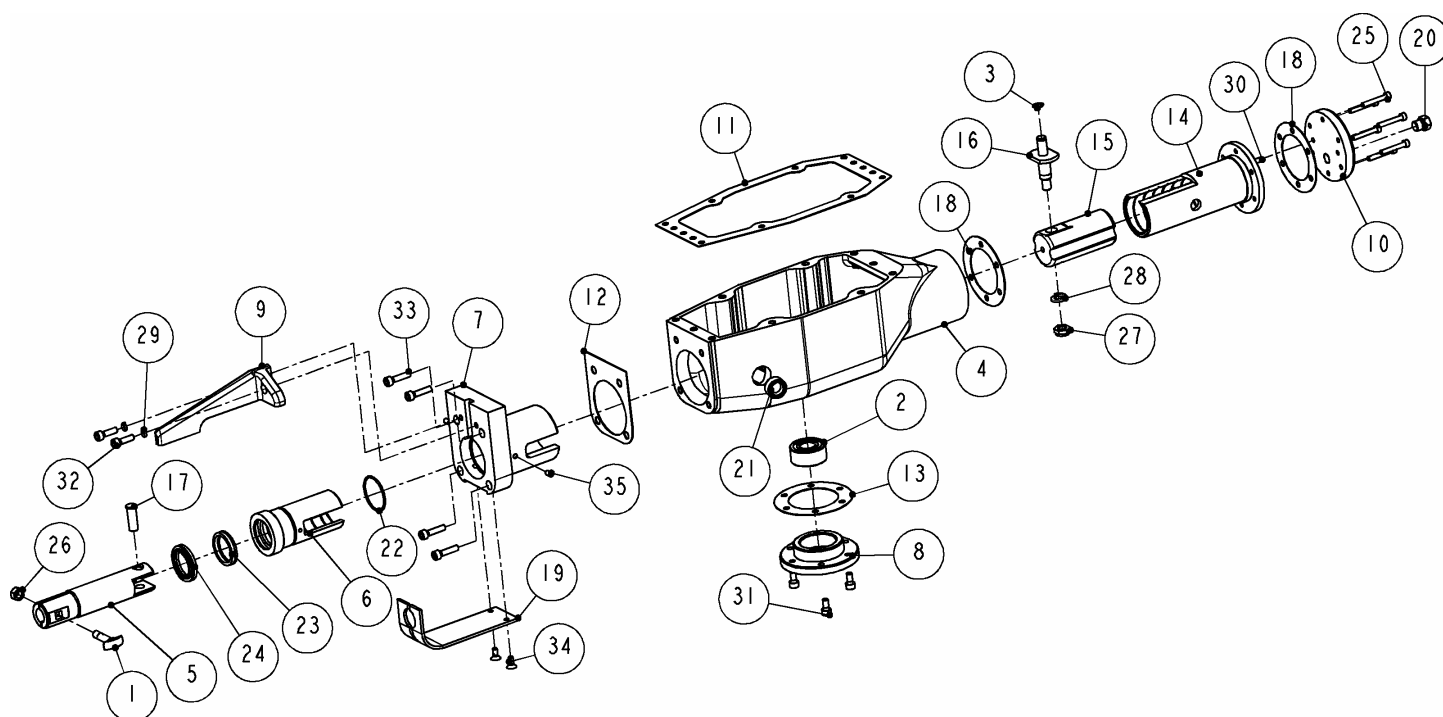
**PARTS BOOK**



**Figure 2 MODEL "EBB-II" – MAIN ASSEMBLY**

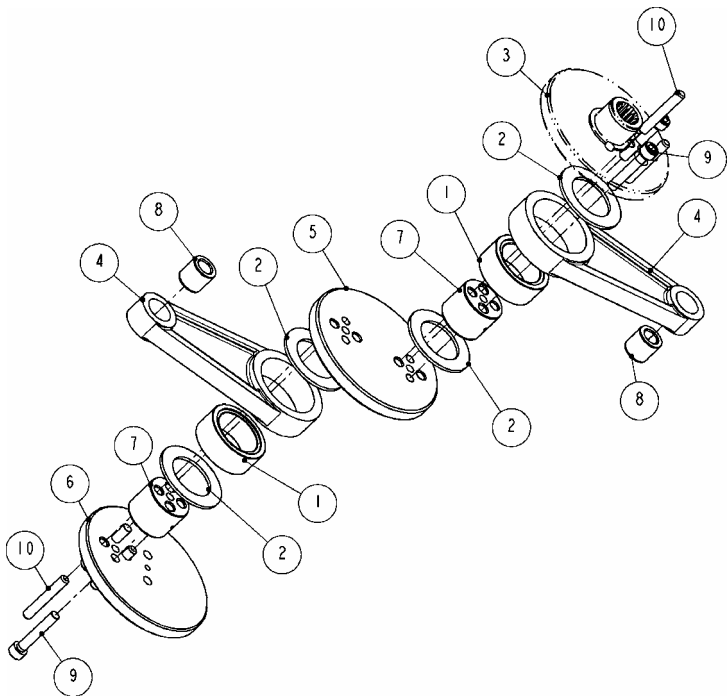
<b>1080000: ELECTRIC BEEF BRISKET SAW</b>			
ITEM	PART #	DESCRIPTION	QTY
<b>BLADES</b>			
1	4100220	SAW BLADE, 12" LONG X 2" WIDE 3 TPI	1
	4100221	SAW BLADE, 10.50" LONG X 1.57" WIDE 3 TPI	1
	4100222	SAW BLADE, 12" LONG X 2" WIDE 4 TPI	1
<b>HANDLE / CONTROL OPTIONS</b>			
2	1080030	ELECTRIC HANDLES WITHOUT ANTI TIE-DOWN	1
	1080031	ELECTRIC HANDLES WITH ANTI TIE-DOWN	1
	1080032	AIR HANDLES WITHOUT ANTI TIE-DOWN	1
	1080033	AIR HANDLES WITH ANTI TIE-DOWN	1
<b>POWER SUPPLY OPTIONS</b>			
3	1080034	POWER SUPPLY, NO ANTI-TIE DOWN	1
	1080035	POWER SUPPLY, ANTI-TIE DOWN	1
	1080036	POWER SUPPLY, 42V, NO ANTI-TIE DOWN	1
	1080037	POWER SUPPLY, 42V, ANTI-TIE DOWN	1
<b>MOTOR OPTIONS</b>			
4	1081000	MOTOR 2HP, 115/230V, 3PH, 60HZ, 11.6/5.8 AMPS	1
	1081001	MOTOR 2HP, 208/416V, 3PH, 60HZ, 6.4/3.2 AMPS	1
	1081002	MOTOR 2HP, 220/380V, 3PH, 60HZ, 6.1/3.5 AMPS	1
	1081003	MOTOR 2HP, 230/460V, 3PH, 60HZ, 5.8/2.9 AMPS	1
	1081004	MOTOR 2HP, 550V, 3PH, 60HZ, 2.3 AMPS	1
	1081007	MOTOR 2HP, 42V, 3PH, 50HZ, 34 AMPS	1
	1081008	MOTOR 2HP, 115/230V, 3PH, 50HZ, 12.4/6.2 AMPS	1
	1081009	MOTOR 2HP, 208/416V, 3PH, 50HZ, 6.9/3.45 AMPS	1
	1081010	MOTOR 2HP, 220/380V, 3PH, 50HZ, 12.9/7.5 AMPS	1
5	1080007	DRIVE BOLT	1
6	1080008	GASKET	1
7	1080009	WIRE BOX	1
8	1080010	GASKET	1
9	1080011	COVER	1
10	1081012	MOTOR ASSEMBLY BASE	1
11	2000130	ON-OFF PLATE	1
12	2000140	BOOT, TOGGLE SWITCH	1
13	2000150	SWITCH	1
14	6330110	FLANGE	1
15	6552010	DRIVE LINK	1
16	6552020	HOUSING ASSEMBLY	1
17	8030050	SCREW	2
18	8210050	SCREW	6
19	8712030	SPRING WASHER (AS REQUIRED)	10

**Figure 3 BOM FOR MODEL "EBB-II"**



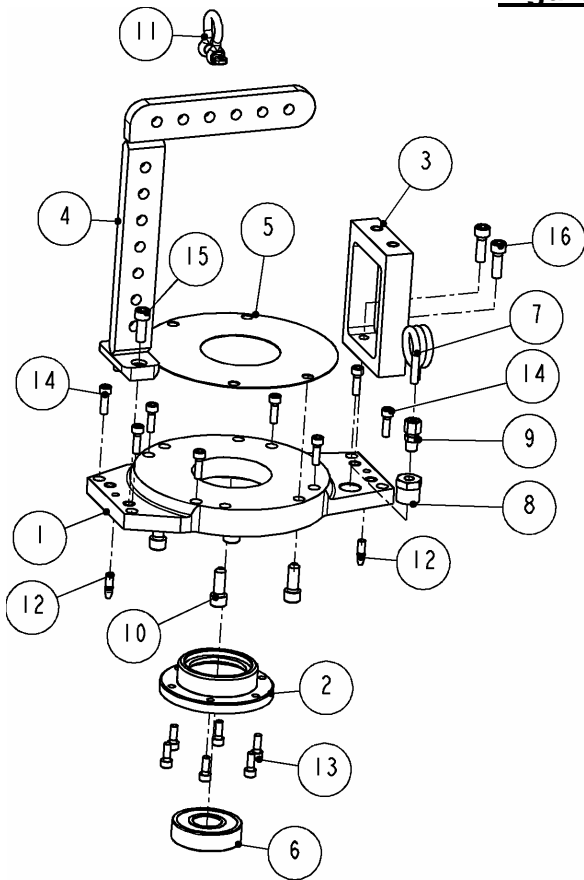
6552020: HOUSING ASSEMBLY							
ITEM	PART #	DESCRIPTION	QTY	ITEM	PART #	DESCRIPTION	QTY
1	1052640	STEP BOLT	1	19	6551400	GUIDE	1
2	3520030	BEARING	1	20	7000210	PLUG	1
3	5100390	RETAINING RING	1	21	7240710	WINDOW	1
4	6551100	HOUSING	1	22	7680290	O-RING	1
5	6551150	SHAFT	1	23	7711140	SEAL	1
6	6551160	BUSHING	1	24	7711150	ROD WIPER	1
7	6551170	BEARING HOUSING	1	25	8210100	SCREW	6
8	6551180	FLANGE	1	26	8500130	NUT	1
9	6551210	GUIDE	1	27	8504870	NUT	1
10	6551220	FLANGE	1	28	8506160	WASHER	1
11	6551230	GASKET	1	29	8506600	WASHER	2
12	6551240	GASKET	1	30	8620250	PIN	1
13	6551250	GASKET	1	31	9211040	SCREW	3
14	6551290	BUSHING	1	32	9211060	SCREW	2
15	6551300	SHAFT	1	33	9211080	SCREW	4
16	6551310	PIN	1	34	9239040	SCREW	2
17	6551320	PIN	1	35	9333000	SET SCREW	2
18	6551330	GASKET	2				

**Figure 4 6552020: HOUSING ASSEMBLY**



6552010: DRIVE LINK			
ITEM	PART #	DESCRIPTION	QTY
1	3705550	BEARING	2
2	3705590	WASHER	4
3	6330110	FLANGE	-
4	6551110	LINK	2
5	6551120	MIDDLE ECCENTRIC	1
6	6551130	FLANGE	1
7	6551200	JORNAL	2
8	6551440	BEARING	2
9	9211111	SCREW	4
10	9620520	PIN	4

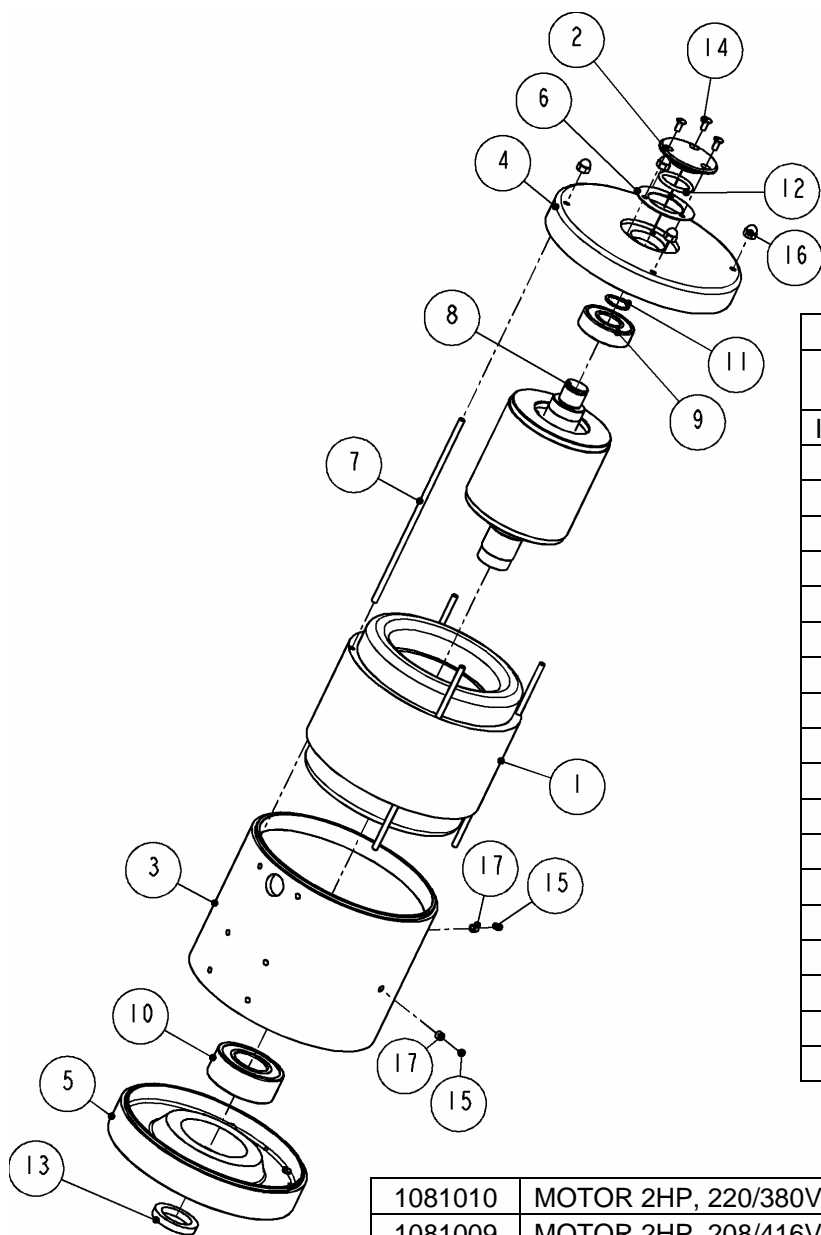
**Figure 5 6552010: DRIVE LINK**



1081012: MOTOR BASE			
ITEM	PART #	DESCRIPTION	QTY
1	1080006	COVER, HOUSING	1
2	1080012	FLANGE	1
3	1080013	HANDLE MOUNT	1
4	1080019	HANGER	1
5	1080021	GASKET	1
6	3303050	BEARING	1
7	6551390	TUBE	1
8	7003680	BUSHING	1
9	7011230	CONNECTOR	1
10	8215080	SCREW	4
11	8462020	ANCHOR SHACKLE	1
12	8622500	DOWEL PIN	2
13	9211050	SCREW	6
14	9211060	SCREW	8
15	9213070	SCREW	2
16	9213080	SCREW	2

**Figure 6 1081012: MOTOR BASE**

**MOTOR OPTIONS**



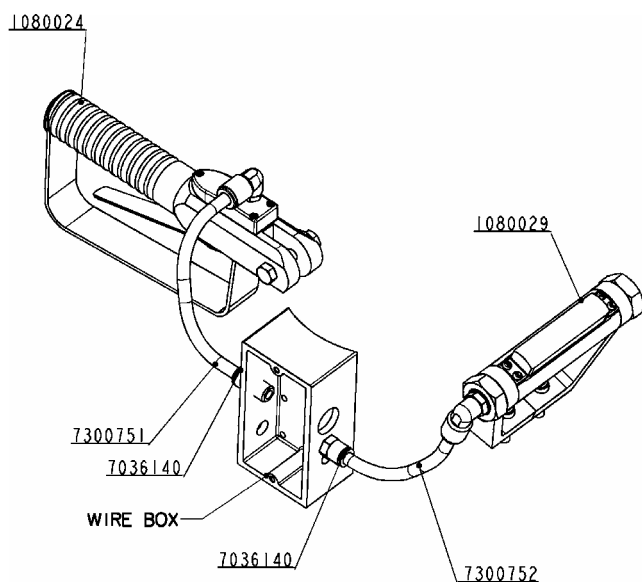
MOTOR ASSEMBLY			
Se chart bellow for correct part number			
ITEM	PART #	DESCRIPTION	QTY
1	<b>OPTIONS</b>	STATOR	1
2	1052830	COVER	1
3	1080001	MOTOR SHELL	1
4	1080002	TOP FLANGE	1
5	1080003	BOTTOM FLANGE	1
6	1080015	GASKET	1
7	1000460	ROD	4
8	1080051	ROTOR ASS'Y	1
9	3204040	BEARING	1
10	3522060	BEARING	1
11	5100780	RETAINING RING	1
12	7682140	O-RING	1
13	7798170	SEAL	1
14	8048030	SCREW	3
15	8336020	SET SCREW	2
16	8501090	NUT	4
17	8803100	INSERT	2

1081010	MOTOR 2HP, 220/380V, 3PH, 50HZ, 12.9/7.5 AMPS	2324010
1081009	MOTOR 2HP, 208/416V, 3PH, 50HZ, 6.9/3.45 AMPS	2324009
1081008	MOTOR 2HP, 115/230V, 3PH, 50HZ, 12.4/6.2 AMPS	2324008
1081007	MOTOR 2HP, 42V, 3PH, 50HZ, 34 AMPS	2324007
1081004	MOTOR 2HP, 550V, 3PH, 60HZ, 2.3 AMPS	2324004
1081003	MOTOR 2HP, 230/460V, 3PH, 60HZ, 5.8/2.9 AMPS	2324003
1081002	MOTOR 2HP, 220/380V, 3PH, 60HZ, 6.1/3.5 AMPS	2324002
1081001	MOTOR 2HP, 208/416V, 3PH, 60HZ, 6.4/3.2 AMPS	2324001
1081000	MOTOR 2HP, 115/230V, 3PH, 60HZ, 11.6/5.8 AMPS	2324000
<b>MOTOR</b>	<b>DESCRIPTION</b>	<b>STATOR</b>
<b>MOTOR ASSEMBLY OPTIONS</b>		

**Figure 7 MOTOR ASSEMBLY**

**HANDLE / CONTROL OPTIONS**

**ELECTRIC HANDLES w/o ATD**

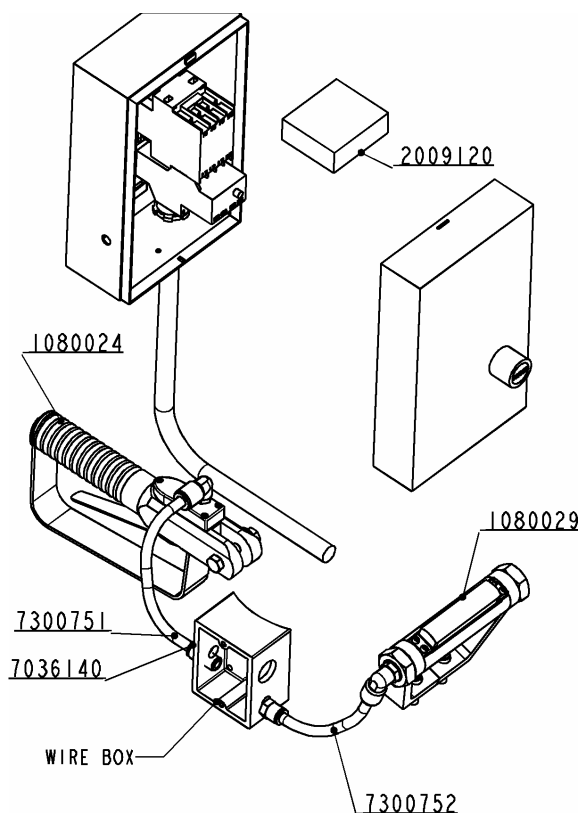


1080030: ELECTRIC HANDLES without ATD			
ITEM	PART #	DESCRIPTION	QTY
1	1080024	ELECTRIC HANDLE	1
2	1080029	ELECTRIC HANDLE, FORWARD	1
3	7036140	FITTING	2
4	7300751	TUBE	1
5	7300752	TUBE	1

Magnetic starter box has to be purchased separately. Please contact Kentmaster representative to obtain correct part number.

**Figure 8 1080030: ELECTRIC HANDLES w/o ATD**

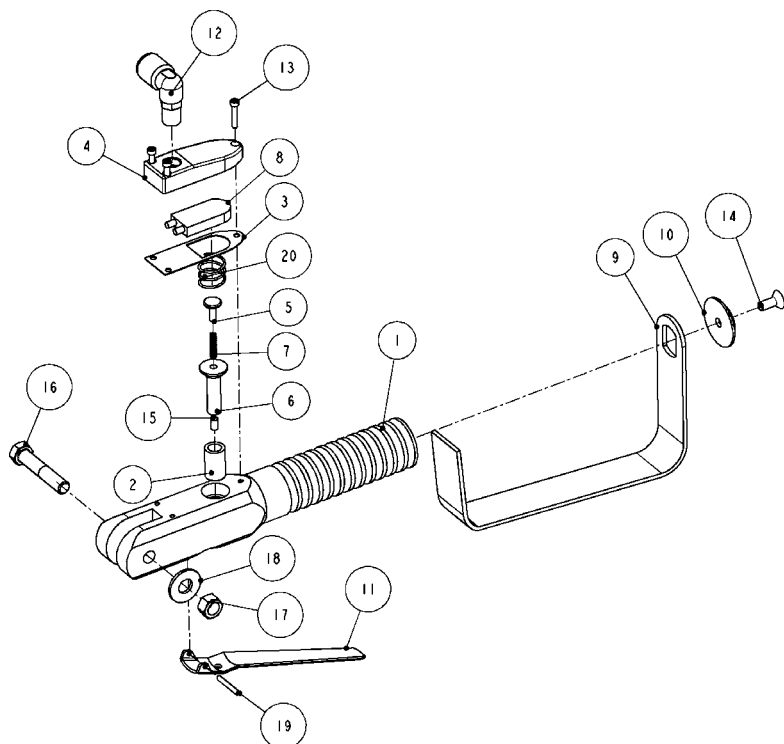
**ELECTRIC HANDLES w/ATD**



1080032: ELECTRIC HANDLES with ATD			
ITEM	PART #	DESCRIPTION	QTY
1	1080024	ELECTRIC HANDLE	1
2	1080029	ELECTRIC HANDLE, FORWARD	1
3	2009120	ATD TIMER	1
4	<b>OPTIONS</b>	MAGNETIC STARTER BOX	1
5	7036140	FITTING	2
6	7300751	TUBE	1
7	7300752	TUBE	1

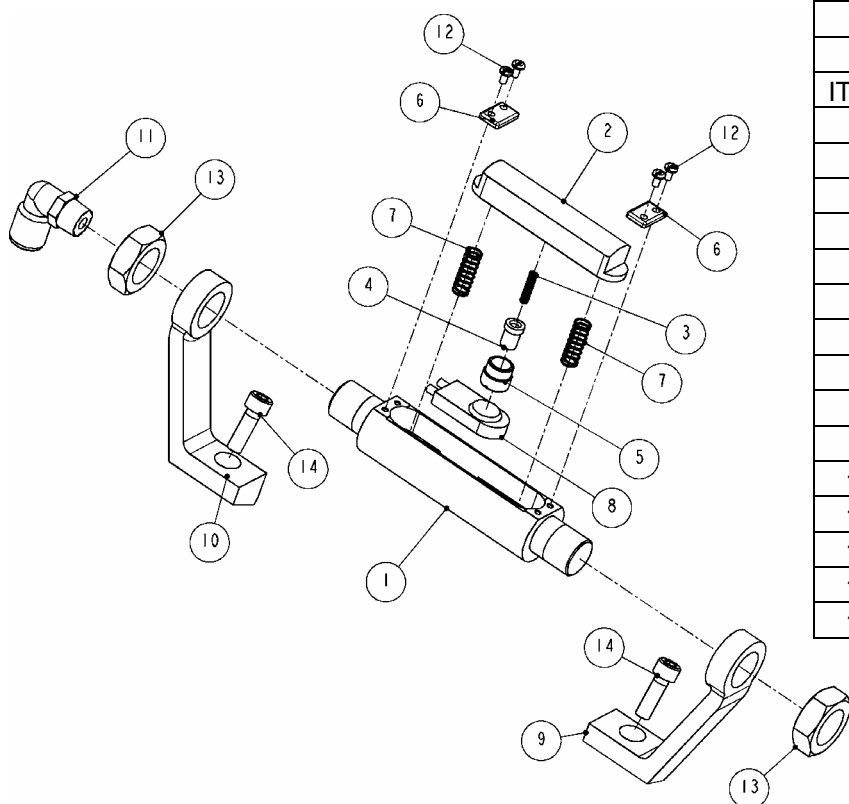
ATD TIMER to be placed into the magnetic starter box. Magnetic starter box has to be purchased separately. Please contact Kentmaster representative to obtain correct part number. See the wiring diagram for wire connections.

**Figure 9 1080032: ELECTRIC HANDLES w/ATD**



1080024: ELECTRIC HANDLE			
ITEM	PART #	DESCRIPTION	QTY
1	1080022	HANDLE	1
2	1080023	BUSHING	1
3	1080026	GASKET	1
4	1080027	SWITCH HOLDER	1
5	1080028	PIN	1
6	1080038	TRIGGER PIN	1
7	1302440	SPRING	1
8	2000690	SWITCH	1
9	6541690	GUARD	1
10	6541720	RETAINER	1
11	6600500	LEVER	1
12	7036560	ELBOW	1
13	8206060	SCREW	3
14	8241050	SCREW	1
15	8339030	STE SCREW	1
16	8415160	SCREW	1
17	8500150	NUT	1
18	8505160	WASHER	1
19	8620080	PIN	1
20	8890060	SPRING	1

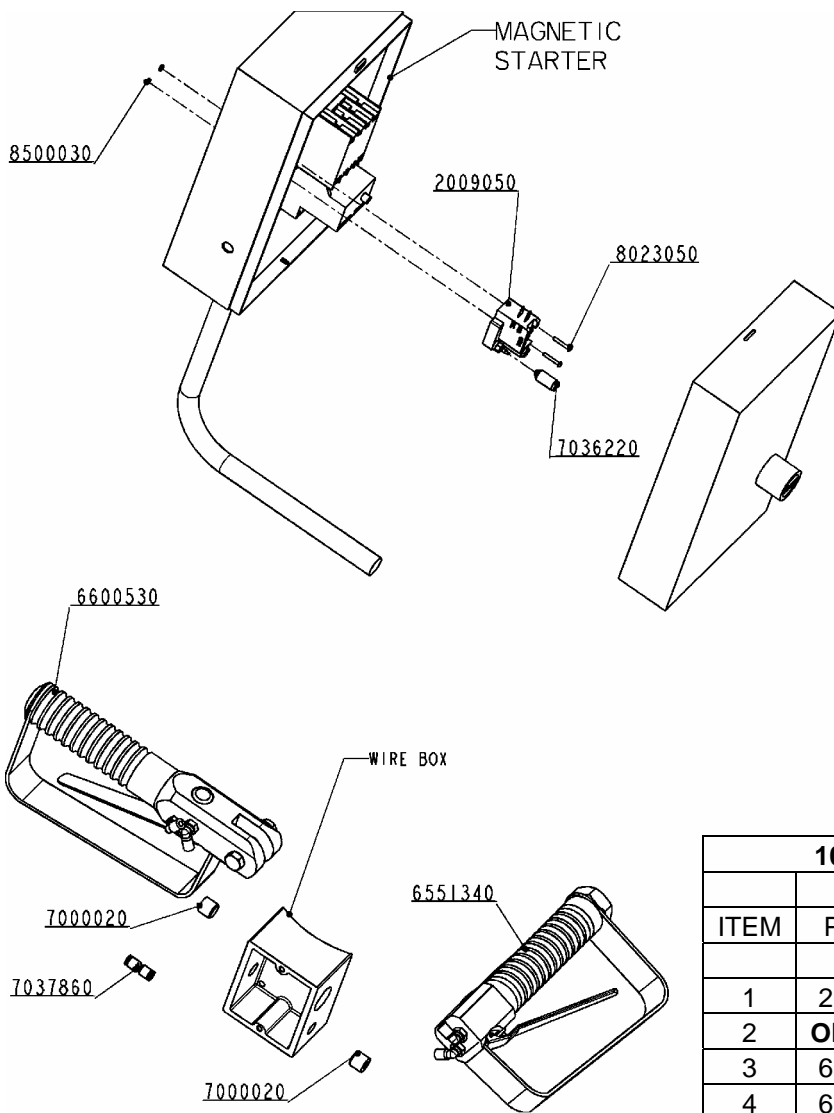
**Figure 10 1080024: REAR ELECTRIC HANDLE**



1080029: ELECTRIC HANDLE, FRONT			
ITEM	PART #	DESCRIPTION	QTY
1	1302420	HANDLE	1
2	1302430	TRIGGER	1
3	1302440	SPRING	1
4	1302450	PLUNGER	1
5	1302460	HOLDER, PLUNGER	1
6	1302470	HOLDER	2
7	1701550	SPRING	2
8	2000690	SWITCH	1
9	6551271	BRACKET, LEFT	1
10	6551272	BRACKET, RIGHT	1
11	7036450	ELBOW	1
12	8086020	SCREW	4
13	8500580	NUT	2
14	9213080	SCREW	2

**Figure 11 1080029: FRONT ELECTRIC HANDLE**

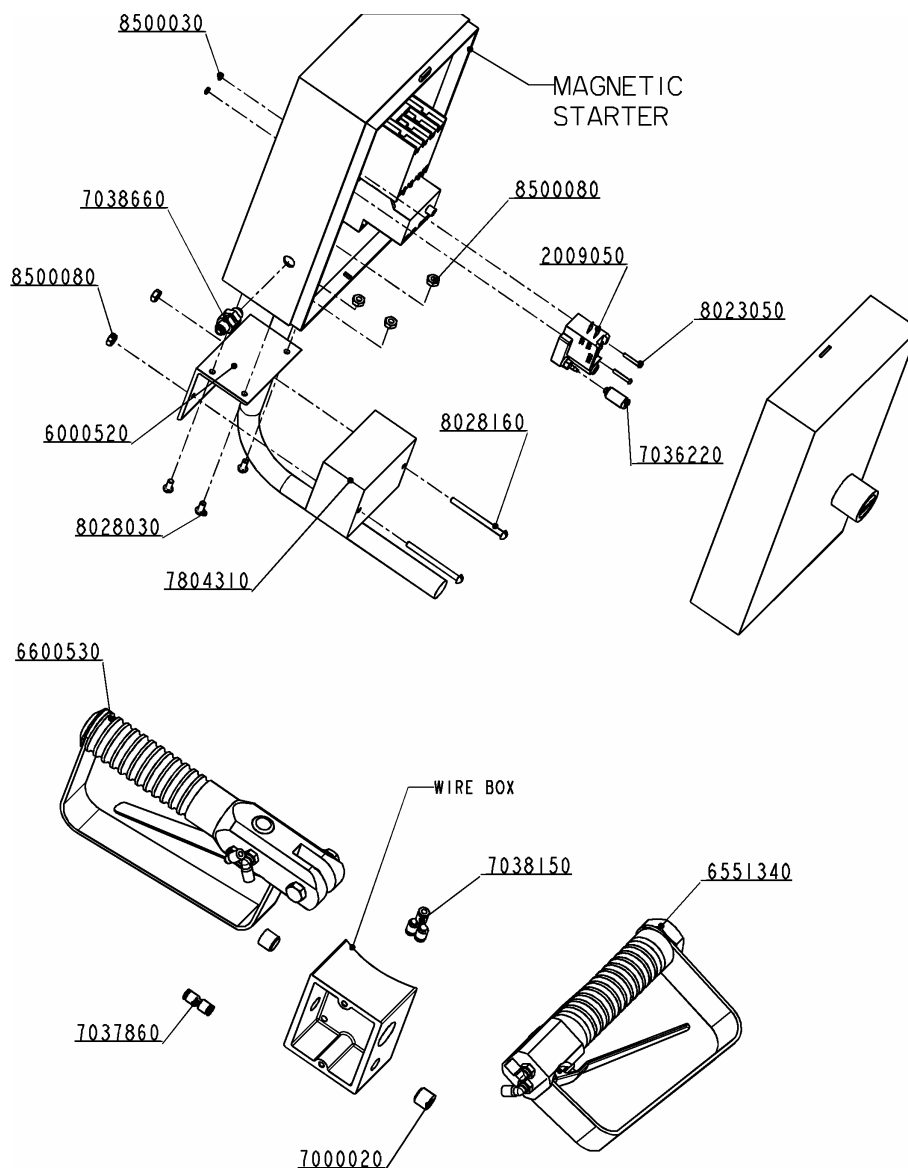
**AIR HANDLES w/o ATD**



1080031: AIR HANDELS w/o ATD, "EBB"			
ITEM	PART #	DESCRIPTION	QTY
1	2009050	SWITCH	1
2	<b>OPTIONS</b>	MAGNETIC STARTER BOX	1
3	6551340	AIR HANDLE, FRONT	1
4	6600530	AIR HANDLE	1
5	7000020	PLUG	2
6	7036220	CONNECTOR	1
7	7037860	UNION	1
8	7300780	AIR TUBING - RED, 20FT	1
9	7300790	AIR TUBING - GREEN, 20FT	1
10	8023050	SCREW	2
11	8500030	NUT	2

**Figure 12 1080031: AIR HANDLES w/o ATD**

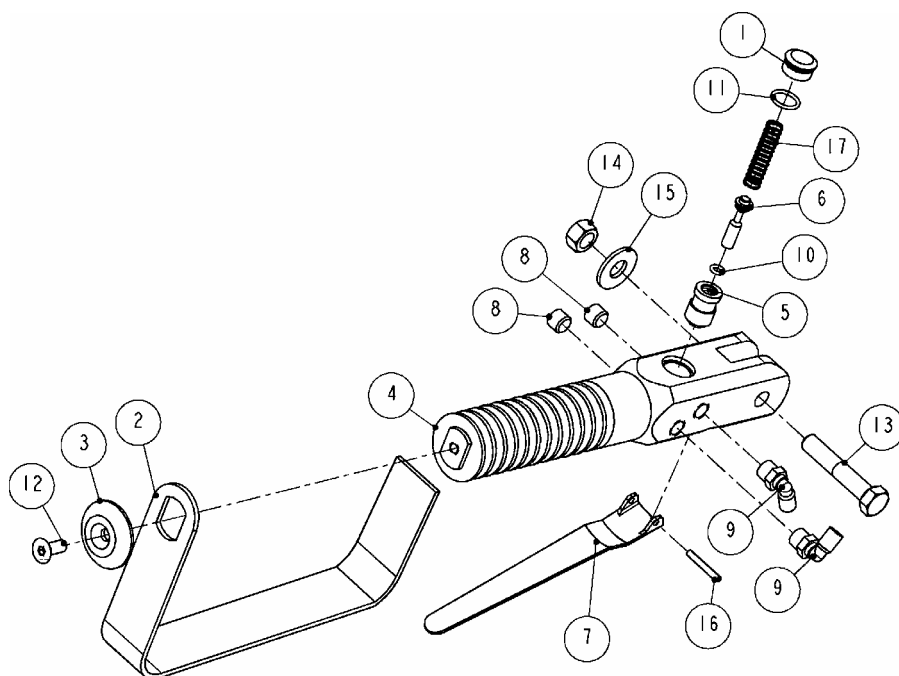
**AIR HANDLES w/ATD**



1080033: AIR HANDELS with ATD							
ITEM	PART #	DESCRIPTION	QTY	ITEM	PART #	DESCRIPTION	QTY
1	2009050	SWITCH	1	10	7038660	UNION	1
2	<b>OPTIONS</b>	MAGNETIC STARTER BOX	1	11	7300780	AIR TUBING - RED, 20FT	2
3	6000520	BRACKET	1	12	7300790	AIR TUBING - GREEN, 20FT	2
4	6551340	AIR HANDLE, FRONT	1	13	7804310	AIR LOGIC MODULE	1
5	6600530	AIR HANDLE	1	14	8023050	SCREW	2
6	7000020	PLUG	2	15	8028030	SCREW	3
7	7036220	CONNECTOR	1	16	8028160	SCREW	2
8	7037860	UNION	1	17	8500030	NUT	2
9	7038150	UNION	1	18	8500080	NUT	5

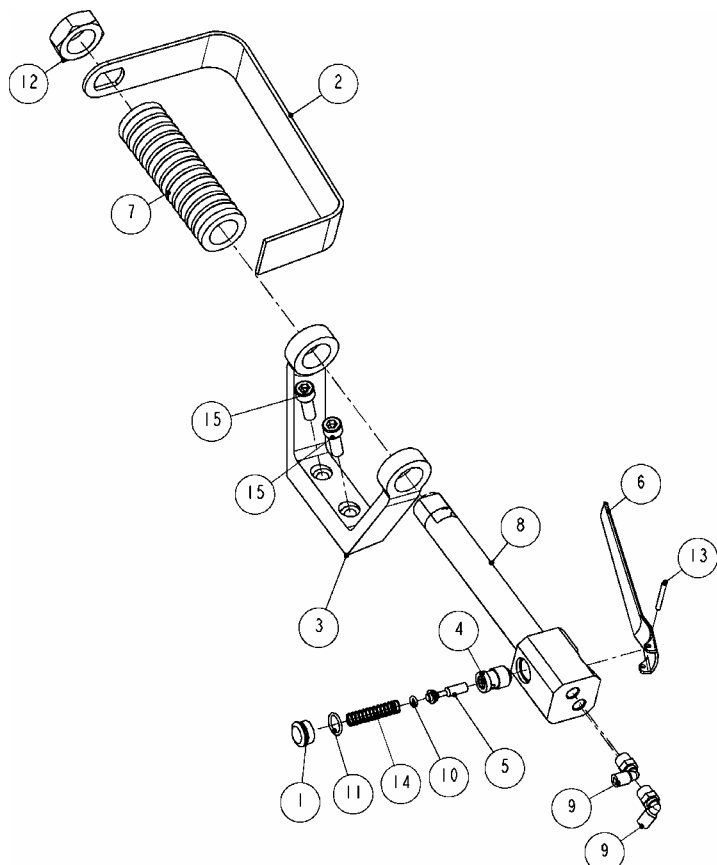
**Figure 13 1080033: AIR HANDLES w/ATD**

KENTMASTER MFG. CO., INC. 1801 SOUTH MOUNTAIN AVE., MONROVIA, CALIFORNIA 91016 UNITED STATES OF AMERICA  
 ☎ TELEPHONE: (626) 359-8888 FAX: (626) 303-5151



6600530: AIR HANDLE, REAR			
ITEM	PART #	DESCRIPTION	QTY
1	6300770	VALVE PLUG	1
2	6541690	GUARD	1
3	6541720	RETAINER	1
4	6600340	HANDLE	1
5	6600350	BUSHING	1
6	6600360	VALVE STEM	1
7	6600500	LEVER	1
8	7000010	PLUG	2
9	7036510	ELBOW	2
10	7680080	O-RING	1
11	7680140	O-RING	1
12	8241050	SCREW	1
13	8415160	SCREW	1
14	8500150	NUT	1
15	8505160	WASHER	1
16	8620080	PIN	1
17	8890010	SPRING	1

**Figure 14 6600530: AIR HANDLE, REAR**



6551340: AIR HANDLE, FRONT			
ITEM	PART #	DESCRIPTION	QTY
1	6300770	VALVE PLUG	1
2	6541690	GUARD	1
3	6551270	BRACKET	1
4	6600350	BUSHING	1
5	6600360	VALVE STEM	1
6	6600500	LEVER	1
7	6620350	SLEEVE	1
8	6620390	HANDLE	1
9	7036510	ELBOW	2
10	7680080	O-RING	1
11	7680140	O-RING	1
12	8500580	NUT	1
13	8620080	PIN	1
14	8890010	SPRING	1
15	9213080	SCREW	2

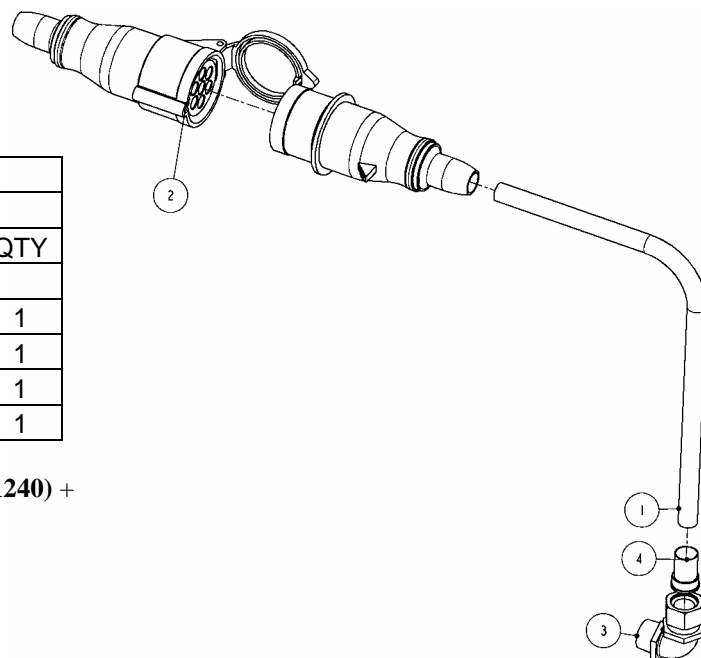
**Figure 15 6551340: AIR HANDLE, FRONT**

**POWER SUPPLY**

**POWER SUPPLY, NO ATD**

1080034: POWER SUPPLY,NO ATD			
ITEM	PART #	DESCRIPTION	QTY
1	1000050	POWER CORD w/MALE PLUG	1
2	2001620	SOCKET, FEMALE	1
3	2008180	CABLE CONNECTOR	1
4	2008220	CORD GRIP	1

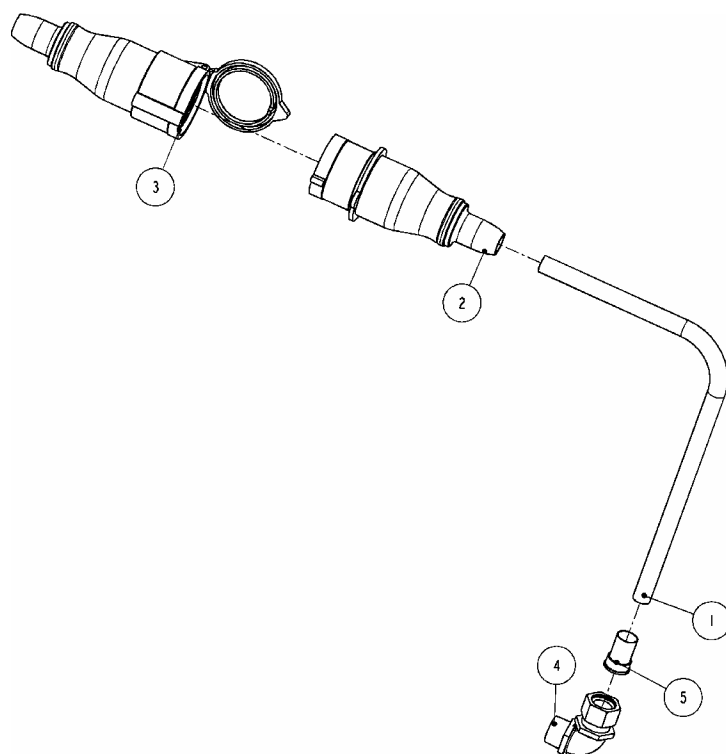
POWER CORD 1000050: POWER CORD 20FT LONG (2001240) + MALE PLUG (2001610)



**Figure 16 1080034: POWER SUPPLY, NO ATD**

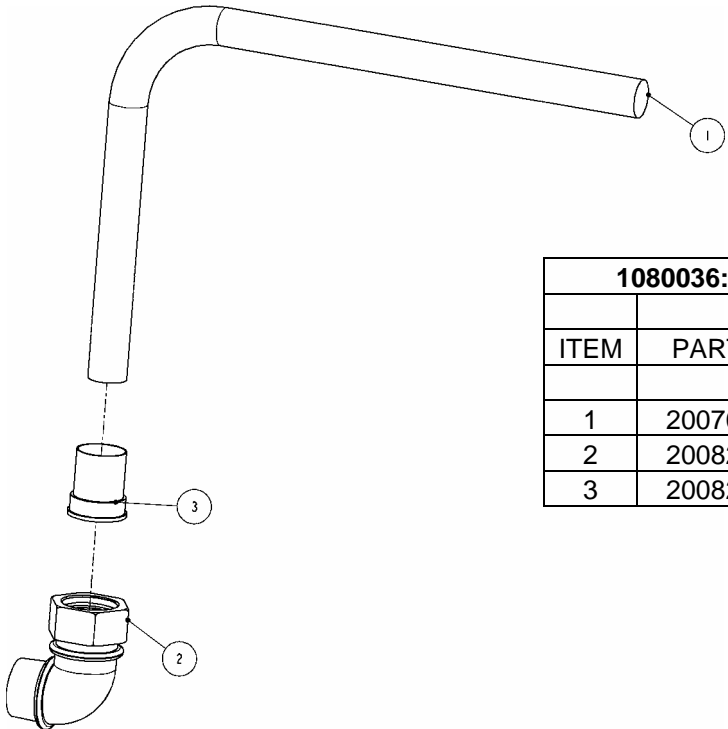
**POWER SUPPLY, ATD**

1080035: POWER SUPPLY, WITH ANTI-TIE DOWN			
ITEM	PART #	DESCRIPTION	QTY
1	2001080	POWER CORD	1
2	2001610	PLUG, MALE	1
3	2001620	SOCKET, FEMALE	1
4	2008180	CABLE CONNECTOR	1
5	2008220	CORD GRIP	1



**Figure 17 1080035: POWER SUPPLY, ATD**

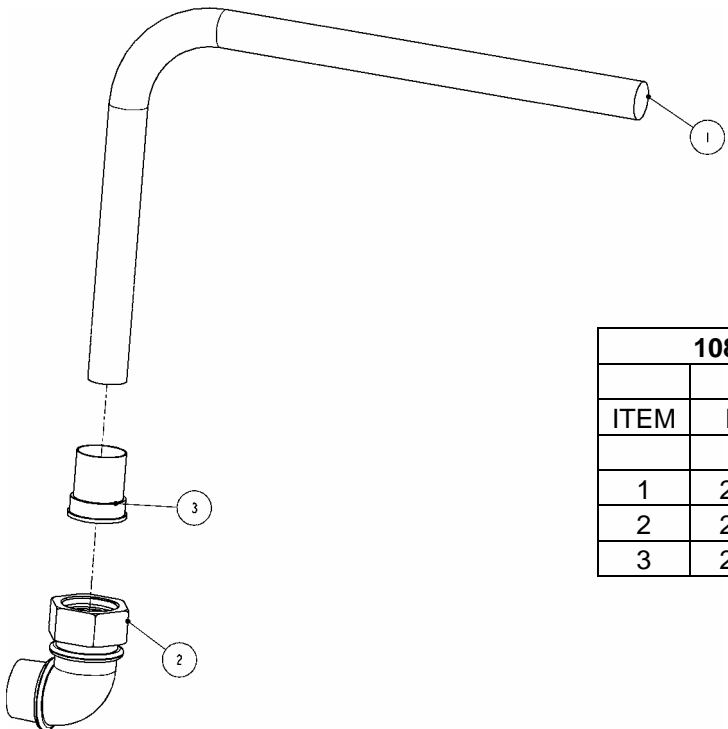
**POWER SUPPLY, 42V, NO ATD**



1080036: POWER SUPPLY, 42V, NO ATD			
ITEM	PART #	DESCRIPTION	QTY
1	2007030	POWER CORD	1
2	2008200	CABLE CONNECTOR	1
3	2008210	CORD GRIP	1

**Figure 18 1080036: POWER SUPPLY, 42V, NO ATD**

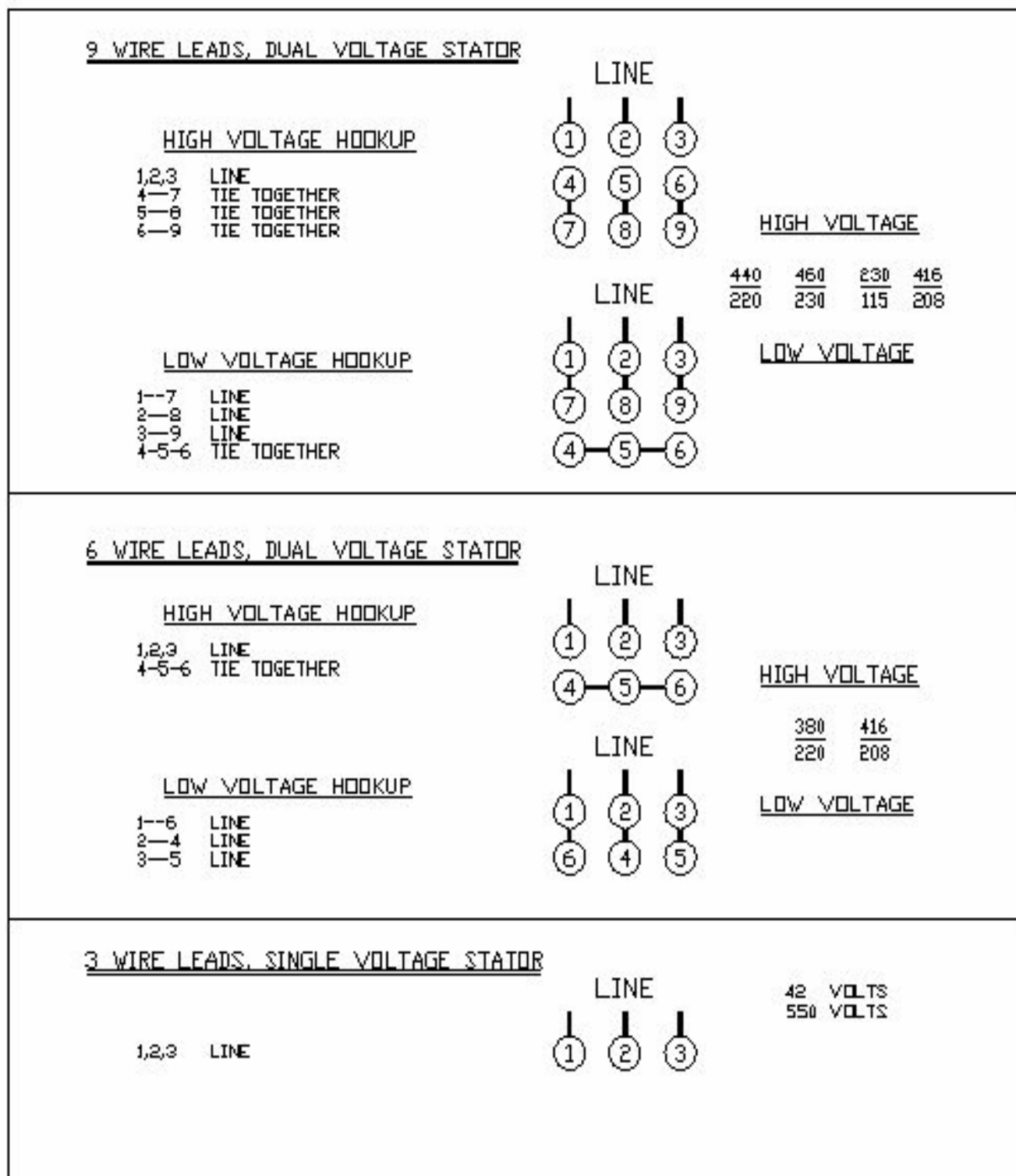
**POWER SUPPLY, 42V, ATD**



1080037: POWER SUPPLY, 42V, ATD			
ITEM	PART #	DESCRIPTION	QTY
1	2001090	POWER CORD	1
2	2008200	CABLE CONNECTOR	1
3	2008210	CORD GRIP	1

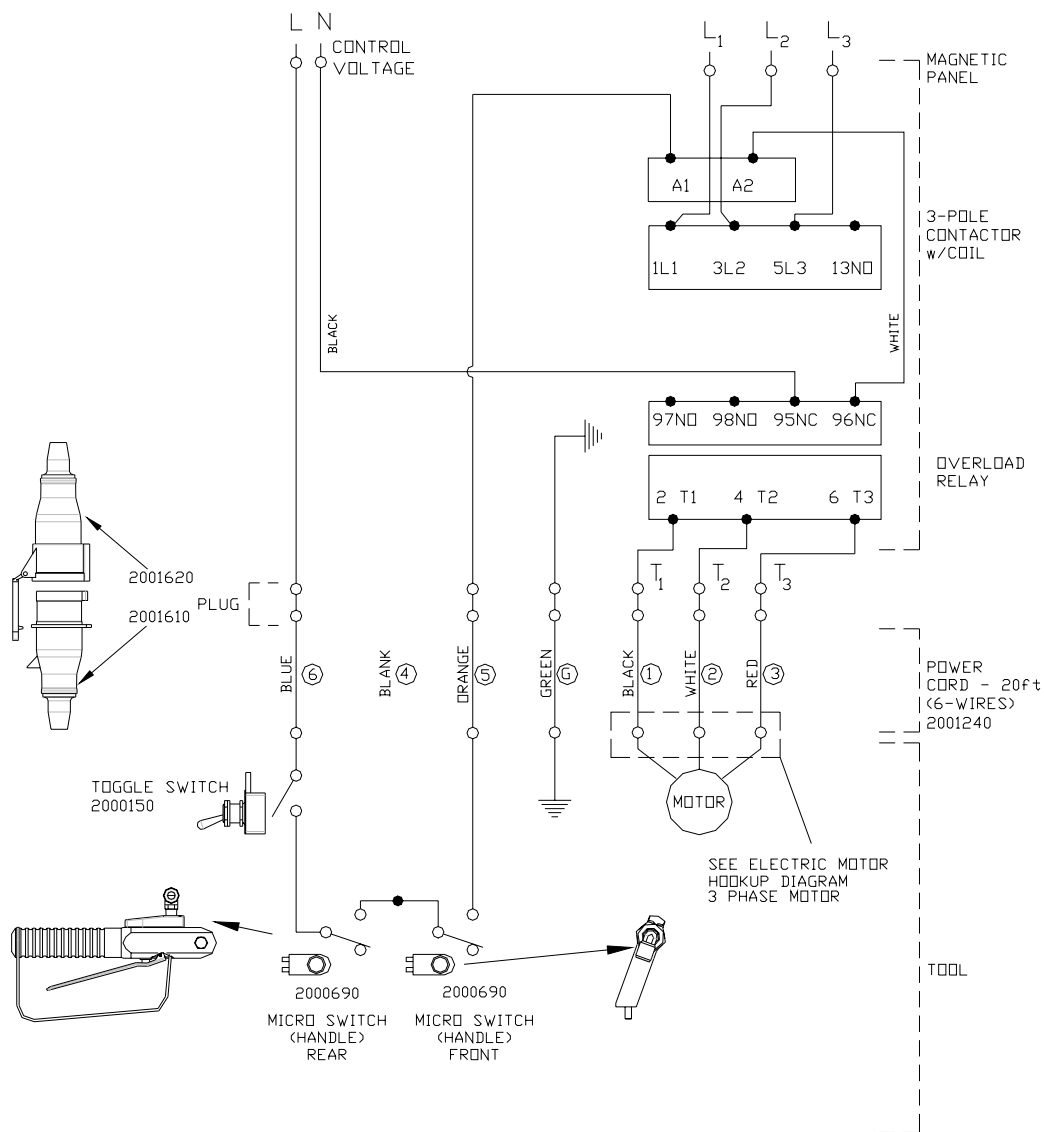
**Figure 19 1080037: POWER SUPPLY, 42V, ATD**

**WIRING DIAGRAMS**



**Figure 20 ELECTRIC MOTOR LEAD HOOKUP DIAGRAM**

**DIFFERENT CONTROL AND MOTOR VOLTAGE, w/o ATD**



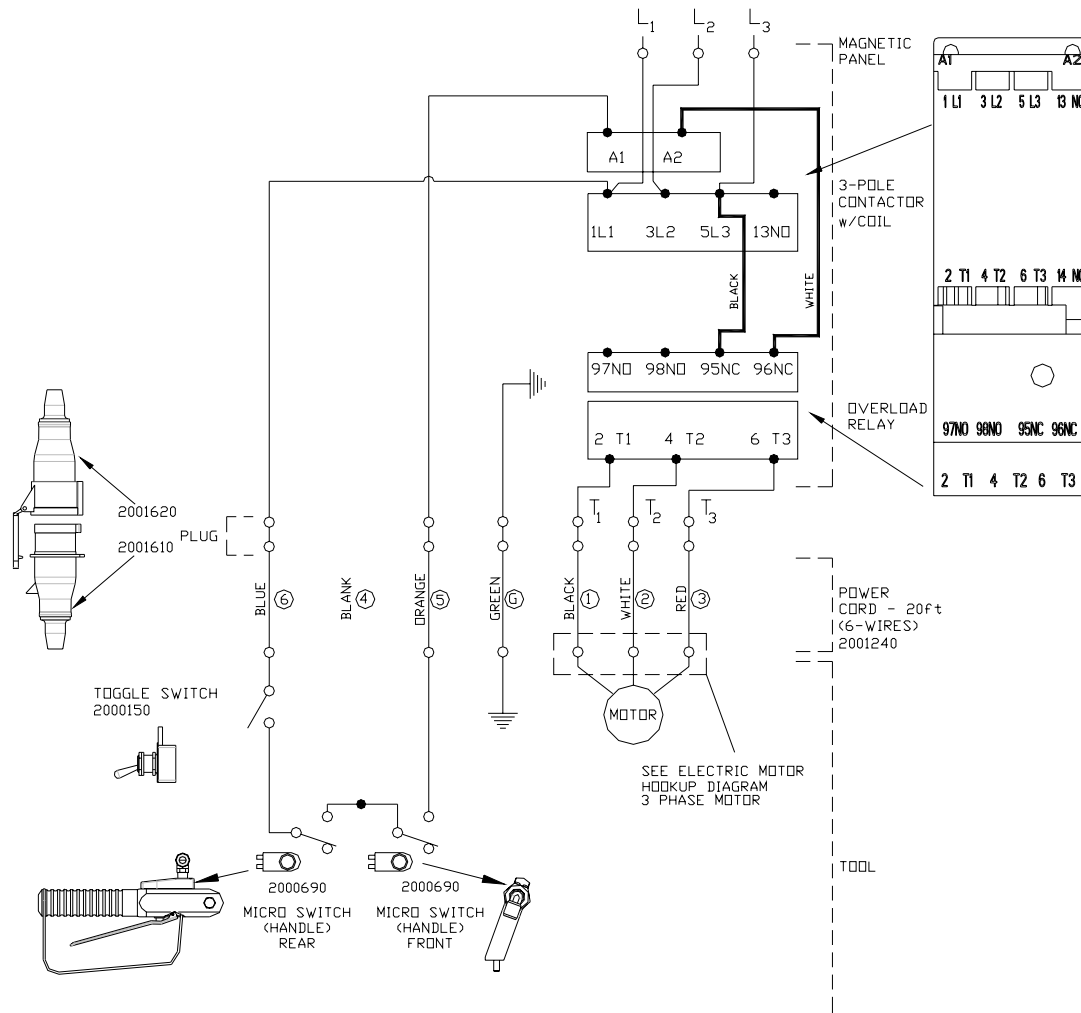
**NOTES:**

1. DO NOT ATTEMPT OR MAKE REPAIRS ON THE MACHINE WHILE POWER IS ON.
2. ALL ELECTRICAL WORK MUST BE PERFORMED BY A QUALIFIED ELECTRICIAN.
3. THE ELECTRICAL DIAGRAM SHOWS THE MACHINE IN THE "OFF" POSITION.
4. THE GROUND WIRE (GREEN) OF THE POWER CABLE IS CONNECTED TO THE FRAME OF THE MACHINE.

**To obtain the correct Kentmaster part number for 3-pole contactor and overload relay, please contact the Kentmaster representative.**

**Figure 21 WIRING DIAGRAM – different control and motor voltage, w/o ATD**

**SAME CONTROL AND MOTOR VOLTAGE, w/o ATD**



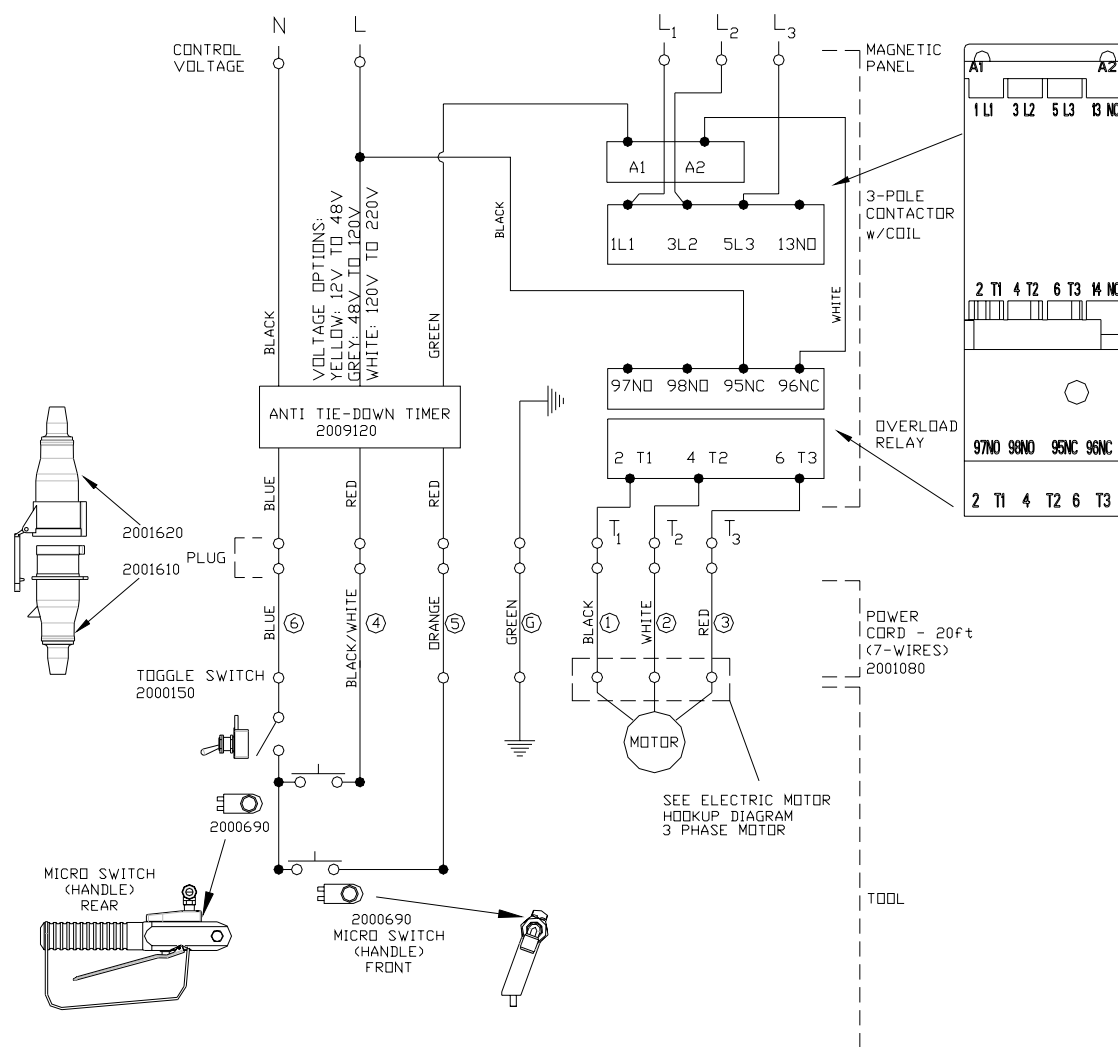
**NOTES:**

1. DO NOT ATTEMPT OR MAKE REPAIRS ON THE MACHINE WHILE POWER IS ON.
2. ALL ELECTRICAL WORK MUST BE PERFORMED BY A QUALIFIED ELECTRICIAN.
3. THE ELECTRICAL DIAGRAM SHOWS THE MACHINE IN THE "OFF" POSITION.
4. THE GROUND WIRE (GREEN) OF THE POWER CABLE IS CONNECTED TO THE FRAME OF THE MACHINE.

**To obtain the correct Kentmaster part number for 3-pole contactor and overload relay, please contact the Kentmaster representative.**

**Figure 22 WIRING DIAGRAM – same control and motor voltage, w/o ATD**

**DIFFERENT CONTROL AND MOTOR VOLTAGE, with ATD**



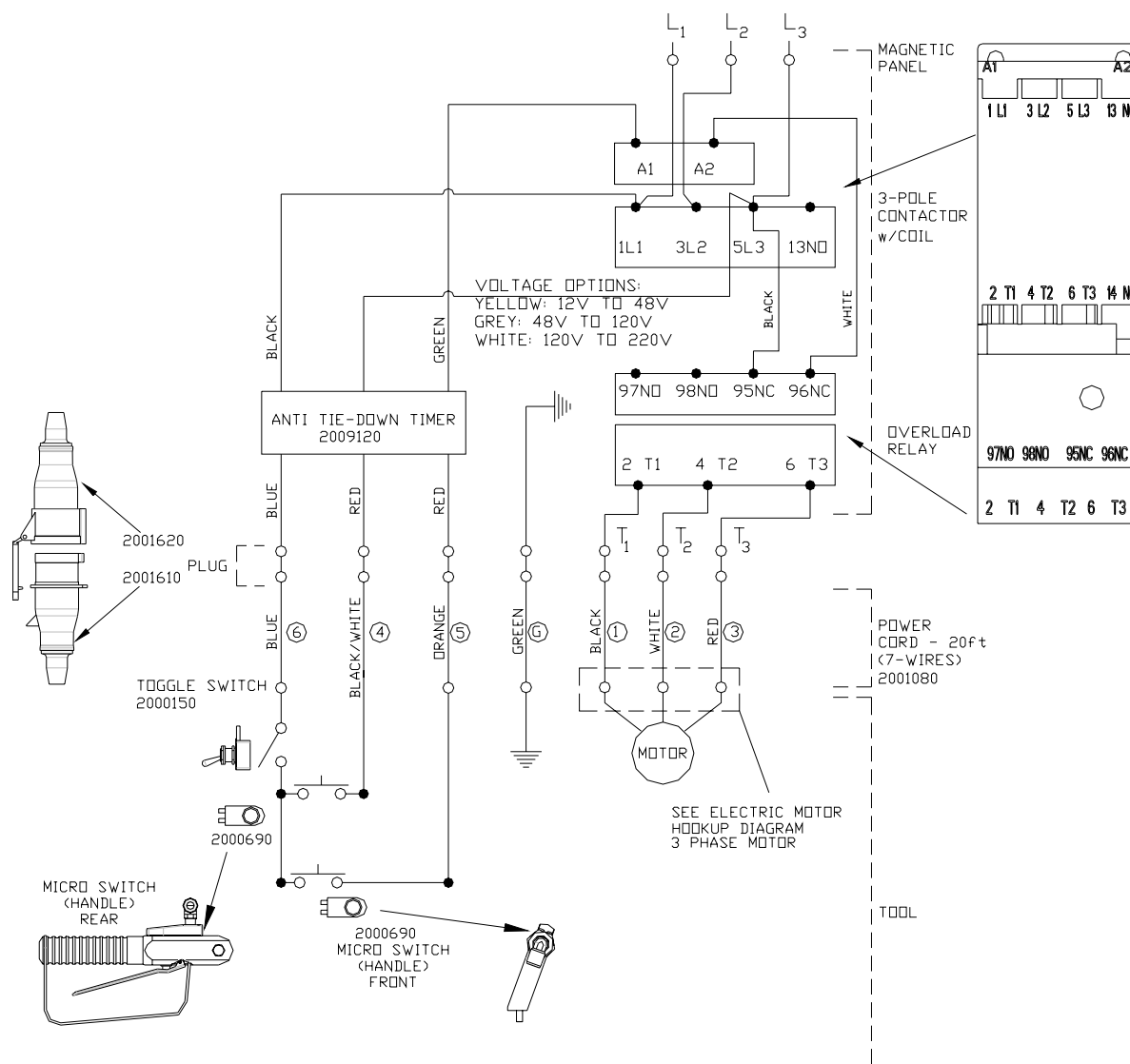
**NOTES:**

1. DO NOT ATTEMPT OR MAKE REPAIRS ON THE MACHINE WHILE POWER IS ON.
2. ALL ELECTRICAL WORK MUST BE PERFORMED BY A QUALIFIED ELECTRICIAN.
3. THE ELECTRICAL DIAGRAM SHOWS THE MACHINE IN THE "OFF" POSITION.
4. THE GROUND WIRE (GREEN) OF THE POWER CABLE IS CONNECTED TO THE FRAME OF THE MACHINE.

**To obtain the correct Kentmaster part number for 3-pole contactor and overload relay, please contact the Kentmaster representative.**

**Figure 23 WIRING DIAGRAM – different control and motor voltage, with ATD**

**SAME CONTROL AND MOTOR VOLTAGE, with ATD**



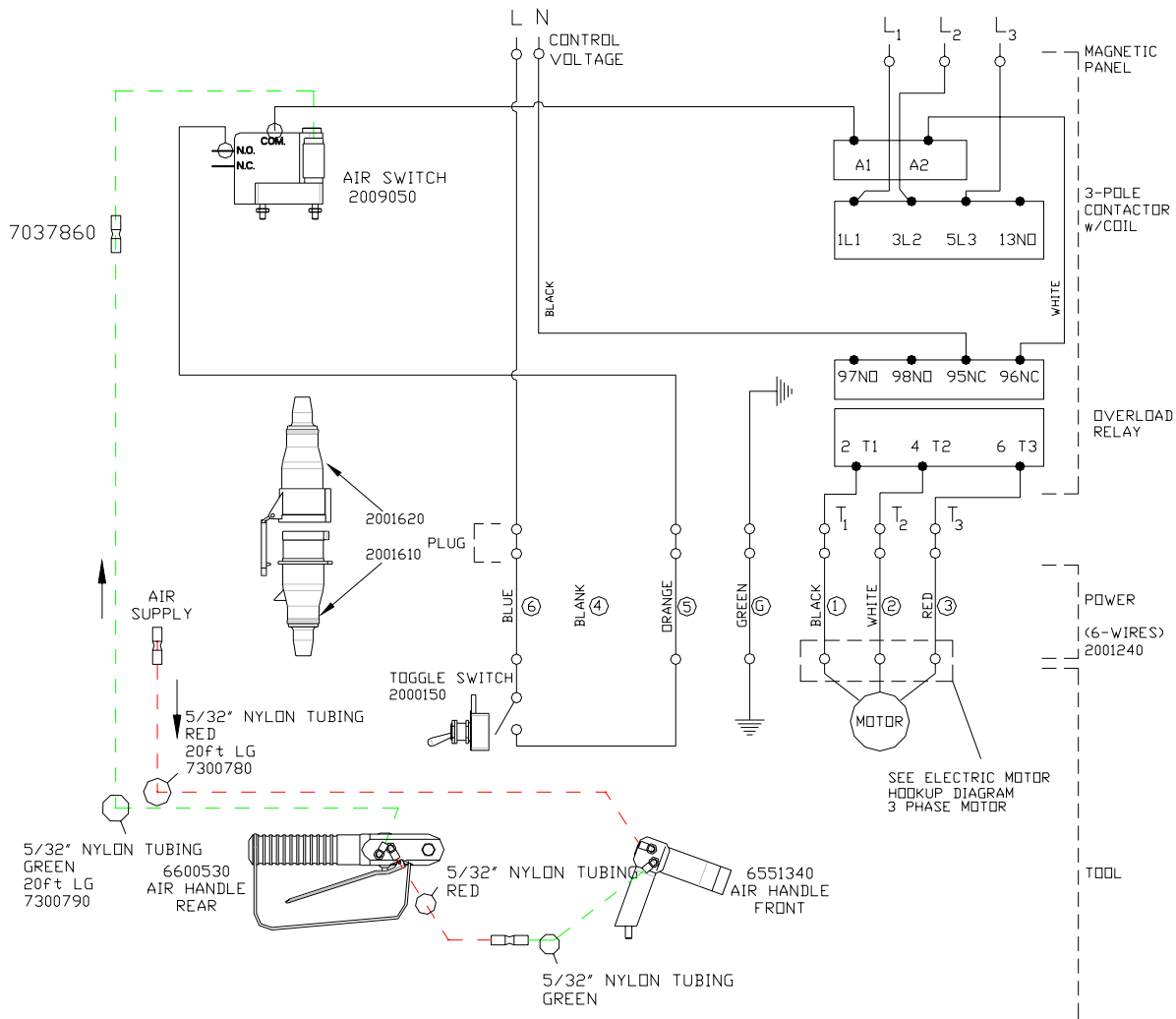
**NOTES:**

1. DO NOT ATTEMPT OR MAKE REPAIRS ON THE MACHINE WHILE POWER IS ON.
2. ALL ELECTRICAL WORK MUST BE PERFORMED BY A QUALIFIED ELECTRICIAN.
3. THE ELECTRICAL DIAGRAM SHOWS THE MACHINE IN THE "OFF" POSITION.
4. THE GROUND WIRE (GREEN) OF THE POWER CABLE IS CONNECTED TO THE FRAME OF THE MACHINE.

**To obtain the correct Kentmaster part number for 3-pole contactor and overload relay, please contact the Kentmaster representative.**

**Figure 24 WIRING DIAGRAM – same control and motor voltage, with ATD**

**AIR, DIFFERENT CONTROL AND MOTOR VOLTAGE, w/o ATD**



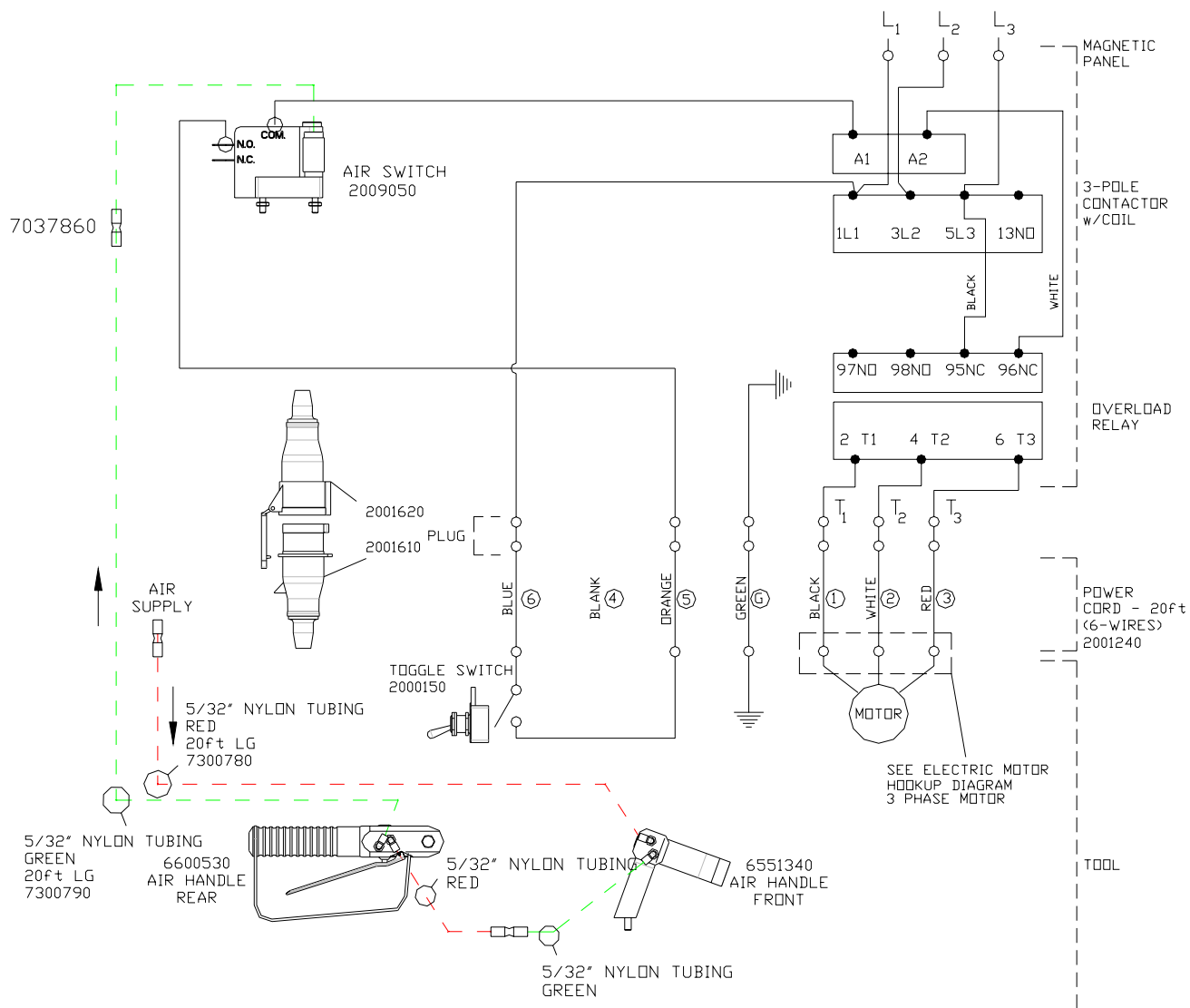
**NOTES:**

1. DO NOT ATTEMPT OR MAKE REPAIRS ON THE MACHINE WHILE POWER IS ON.
2. ALL ELECTRICAL WORK MUST BE PERFORMED BY A QUALIFIED ELECTRICIAN.
3. THE ELECTRICAL DIAGRAM SHOWS THE MACHINE IN THE "OFF" POSITION.
4. THE GROUND WIRE (GREEN) OF THE POWER CABLE IS CONNECTED TO THE FRAME OF THE MACHINE.

**To obtain the correct Kentmaster part number for 3-pole contactor and overload relay, please contact the Kentmaster representative.**

**Figure 25 WIRING DIAGRAM – Air, different control and motor voltage, w/o ATD**

**AIR, SAME CONTROL AND MOTOR VOLTAGE, w/o ATD**



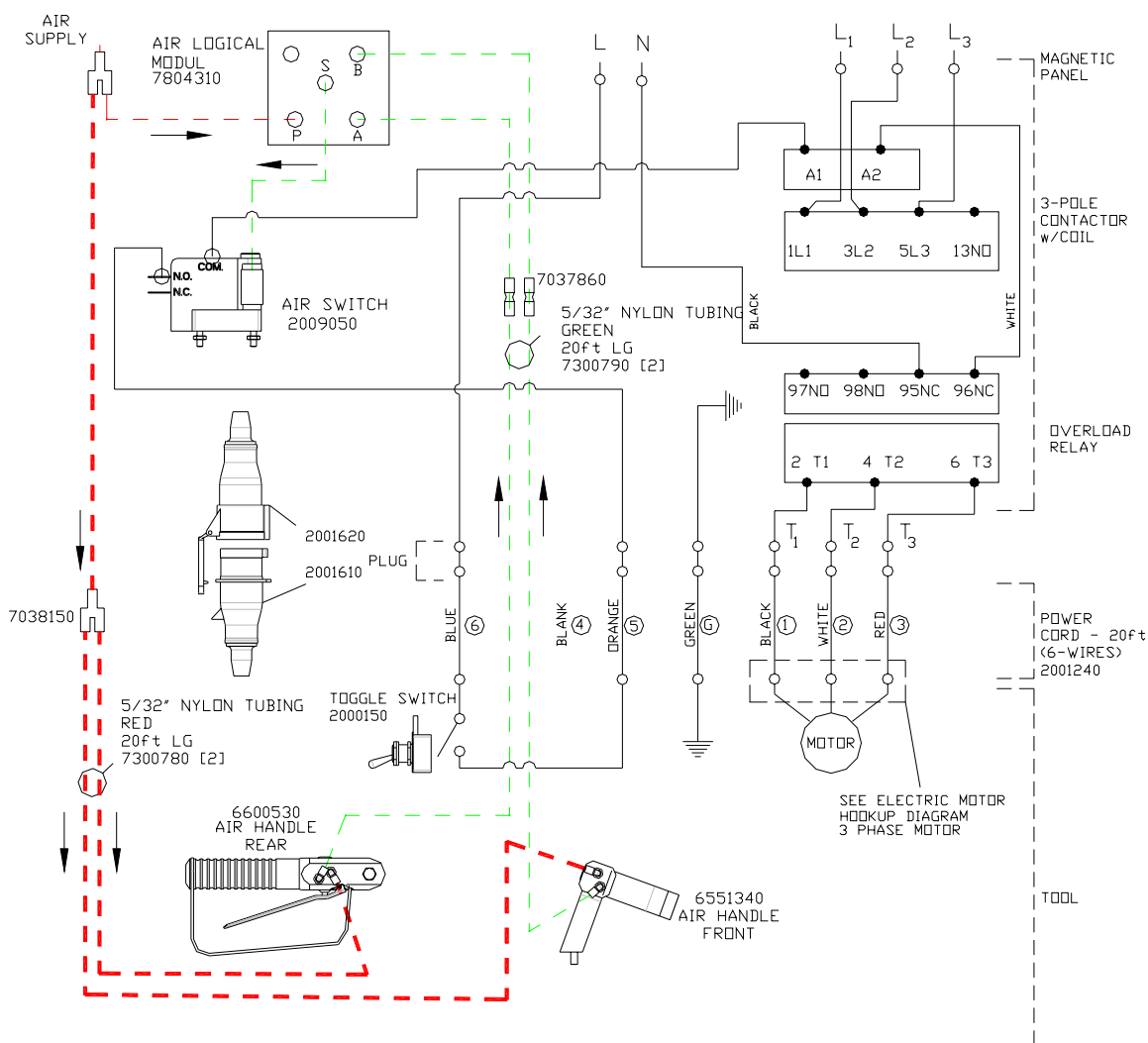
**NOTES:**

1. DO NOT ATTEMPT OR MAKE REPAIRS ON THE MACHINE WHILE POWER IS ON.
2. ALL ELECTRICAL WORK MUST BE PERFORMED BY A QUALIFIED ELECTRICIAN.
3. THE ELECTRICAL DIAGRAM SHOWS THE MACHINE IN THE "OFF" POSITION.
4. THE GROUND WIRE (GREEN) OF THE POWER CABLE IS CONNECTED TO THE FRAME OF THE MACHINE.

**To obtain the correct Kentmaster part number for 3-pole contactor and overload relay, please contact the Kentmaster representative.**

**Figure 26 WIRING DIAGRAM – Air, same control and motor voltage, w/o ATD**

**AIR, DIFFERENT CONTROL AND MOTOR VOLTAGE, with ATD**

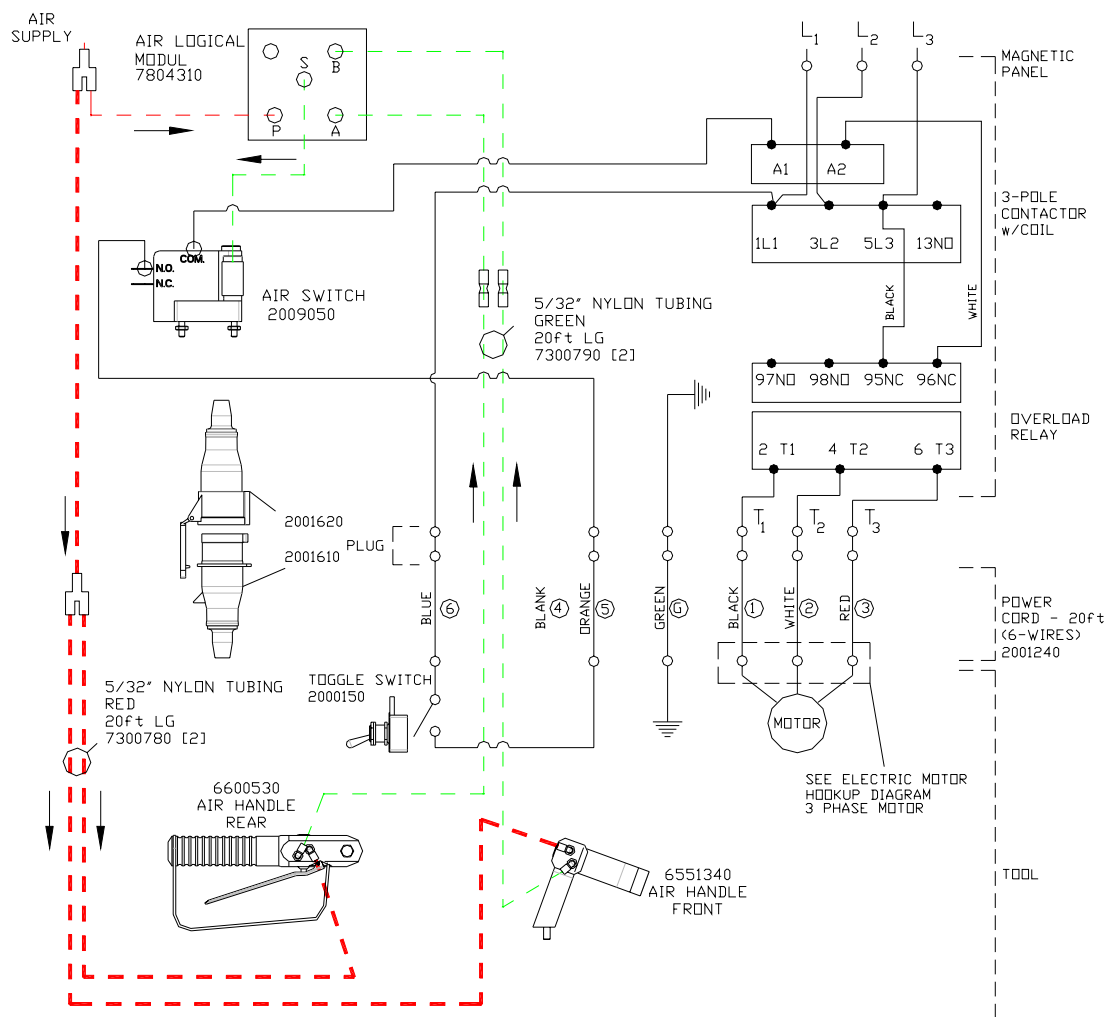


**NOTES:**

1. DO NOT ATTEMPT OR MAKE REPAIRS ON THE MACHINE WHILE POWER IS ON.
2. ALL ELECTRICAL WORK MUST BE PERFORMED BY A QUALIFIED ELECTRICIAN.
3. THE ELECTRICAL DIAGRAM SHOWS THE MACHINE IN THE "OFF" POSITION.
4. THE GROUND WIRE (GREEN) OF THE POWER CABLE IS CONNECTED TO THE FRAME OF THE MACHINE.

**To obtain the correct Kentmaster part number for 3-pole contactor and overload relay, please contact the Kentmaster representative.**

**Figure 27 WIRING DIAGRAM – Air, different control and motor voltage, with ATD**

**AIR, SAME CONTROL AND MOTOR VOLTAGE, with ATD**

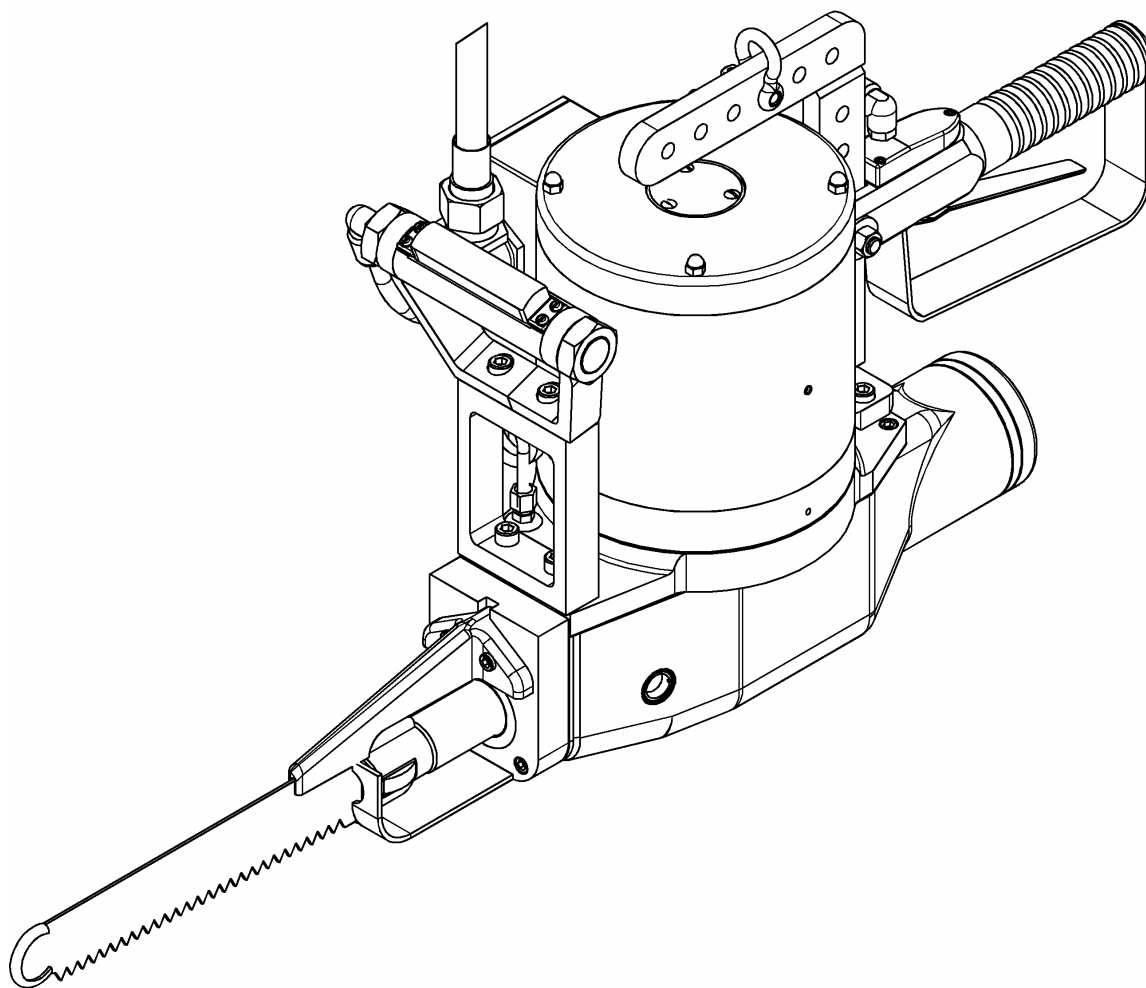
## NOTES:

1. DO NOT ATTEMPT OR MAKE REPAIRS ON THE MACHINE WHILE POWER IS ON.
2. ALL ELECTRICAL WORK MUST BE PERFORMED BY A QUALIFIED ELECTRICIAN.
3. THE ELECTRICAL DIAGRAM SHOWS THE MACHINE IN THE "OFF" POSITION.
4. THE GROUND WIRE (GREEN) OF THE POWER CABLE IS CONNECTED TO THE FRAME OF THE MACHINE.

**To obtain the correct Kentmaster part number for 3-pole contactor and overload relay, please contact the Kentmaster representative.**

**WIRING DIAGRAM – Air, same control and motor voltage, with ATD**

[ENGLISH]

**GENERAL INFORMATION**

**MODEL**  
**“EBB-II” ELECTRIC BEEF BRISKET SAW**

**SERVICE CENTERS**

**KENTMASTER LTD. (U.K)**  
 16 AVONBANK INDUSTRIAL CENTRE  
 WEST TOWN ROAD  
 AVONMOUTH - BRISTOL BS11 9DE  
 UNITED KINGDOM

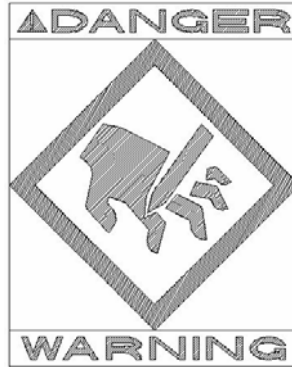
☎ TELEPHONE: ++ 44- (0) 117- 9235035  
 FAX: ++ 44- (0) 117- 9829010

**KENTMASTER MFG. CO., INC.**  
 1801 SOUTH MOUNTAIN AVE.  
 MONROVIA, CALIFORNIA 91016  
 UNITED STATES OF AMERICA

☎ TELEPHONE: (626) 359-8888  
 FAX: (626) 303-5151

**NOTICE TO EMPLOYER AND PURCHASER OF TOOL**  
**NOTICE TO SAFETY DIRECTOR**

**You have purchased a powerful tool that, if misused, can cause severe injury and harm to your employees. You must instruct your employees in the safe and proper use of this tool and to follow the safety procedures and instructions that have been supplied by the manufacturer of this tool. Please follow the following instructions.**



1. Instruct tool operators to test the tool each day before using it to be sure it does not malfunction. Remove and repair any tool that malfunctions.
2. Instruct tool operators to immediately stop using a tool that malfunctions or is defective.
3. Instruct personnel to immediately remove all tools that malfunction. Be sure to disconnect tool from power supply.
4. Instruct all personnel to stay clear of tool, and not to stand or walk in front of, or next to tool when in use.
5. Point out to all personnel the dangers related to the misuse of tool and the importance of following safety procedures and instructions.
6. Do not make, or allow others to make, alterations or modifications to this tool. Replace all lost or illegible labels.
7. Follow all safety, installation and maintenance instructions provided with this tool. Establish proper safety procedures in accordance with local and national requirements to prevent accidental energizing of tool that can cause injuries.
8. If this tool is sold or change in ownership takes place, you must provide the new owner all safety instructions, notices and maintenance instructions you were originally provided. You can obtain additional copies of the instructions from Kentmaster, free of charge upon request.
9. Give copies of instructions to:
  - (A) Tool Operators
  - (B) Maintenance Supervisor
  - (C) Clean-up Supervisor




## GENERAL INFORMATION



### COVERING: SAFETY PRECAUTIONS AND PLACING INTO SERVICE ELECTRICALLY POWERED BEEF BRISKET SAW

#### READ THIS MANUAL CAREFULLY BEFORE INSTALLING, OPERATING OR SERVICING THIS TOOL

IT IS THE RESPONSIBILITY OF THE EMPLOYER TO PLACE THIS INFORMATION INTO THE HANDS OF THE OPERATOR.

#### PLACING INTO SERVICE

- |  |   |
|--|---|
|  <b>WARNING</b> | = Hazards or unsafe practices which could result in severe personal injury, death or substantial property damage. |
|  <b>CAUTION</b> | = Hazards or unsafe practices which could result in minor personal injury, product or property damage.            |
|  <b>NOTICE</b>  | = Important installation, operation or maintenance information.   |

- |  |   |
|--|---|
|  <b>WARNING</b> | Installation, adjustment repair and maintenance of this tool must be made by trained and qualified personnel.   |
|  <b>WARNING</b> | Always disconnect power supply from tool before: <ul style="list-style-type: none"> <li>(A) Installing or removing blade from tool.</li> <li>(B) Making repairs or adjustments to the tool.</li> <li>(C) performing maintenance or cleanup work.</li> </ul> |

**DECLARATION OF CONFORMITY**

**DECLARATION OF CONFORMITY**

DECLARATION DE CONFORMITE -DECLARACION DE CONFORMIDAD- ERKLARUNG BEZUGLICH EINHALTUNG DER VORSCHRIFTEN  
DICHIARAZIONE DI CONFORMITA . CONFORMITEITSVERKLARING

**MANUFACTURED BY:**

FABRIQUE PAR:  
FABRICADA POR:  
HERGESTELLTVON:  
FABBRICATO DA:  
VERVAARDIGD DOOR:

**KENTMASTER MFG CO., INC.**  
**1801 SOUTH MOUNTAIN AVE.**  
**MONROVIA, CALIFORNIA 91016**  
**UNITED STATES OF AMERICA**  
**TELEPHONE (626) 359-8888 FAX (626) 303-5151**

**TYPE / SERIES: ELECTRIC BEEF BRISKET SAW**

TYPE / SERIE:  
TIPO / SERIE:  
TYP / SERIE:  
TIPO / SERIE:  
TYPE / SERIE:

**MODEL: EBB-II**

MODELE:  
MODELO:  
MODELL:  
MODELLO:  
MODEL:

**SERIAL NO. RANGE: XXXXX**

N SERIE: • GAMA DE No. DE SERIE: • SERIEN-NR.-BEREICH: • NUMERI DI SERIE: • SERIENUMMERS:

**This product complies with the following European Community Directives:**

Ce produit est conforme aux directives de la Communauté europeenne suivantes:  
Este producto cumple con las siguientes Directrices de la Comunidad Europea:  
Dieses Produkt erfüllt die folgenden Vorschriften der Europäischen Gemeinschaft:  
Questo prodotto e conforme alle seguenti direttive CEE:  
Dit produkt voldoet aan de volgende EG-richtlijnen:

**89/392/EEC, 91/368/EEC, 93/44/EEC, 93/68/EEC**

**The following Standards were used to verify compliance with the Directives:**

Les normes suivantes ont ete utilisees pour verifier la conformite avec les Directives:  
Las siguientes Normas se usaron para verificar el cumplimiento de las Directrices:  
Folgende Normen wurden angewandt, um erfllung der vorschriften zu bestatigen:  
Per verificare la conformita del prodotto alle direttive sono stati usati i seguenti standard:  
De volgende normen zijn gebruikt om naleving van de richtlijnen te bevestigen:

**EN 292**

**Approved by:** \_\_\_\_\_

**Date:** AUG - 1 - 1995

RALPH KARUBIAN MONROVIA, CA. U.S.A  
(Engineering Manager) (Directeur technique) (gerente de ingenieria) (verantwortlicher Konstruktionsleiter) (Responsabile tecnico) (ondersteunend technisch mangar)

## Kentmaster Worldwide Location

Kentmaster Equipment (Aust) PTY.LTD.

Unit 2,24 Central Court  
Browns Plains Qld. 4118  
Australia

Telephone: (07) 3806-8400

Fax: (07) 3806-7933

Australia@Kentmaster.com

---

Kentmaster do Brasil, Ltda.

Av. Dr. Joao Teodoro No. 805  
Bairro De Vila Rezende  
13405-240 Piracicaba, SP,  
Brazil

Telephone #1: (019) 3 413 3113

Telephone #2: (019)983-4973

Fax: (019) 3 413 3113

Brazil@Kentmaster.com

---

Kentmaster (IRL) LTD.

Benamore, Dublin Road.  
Roscrea,  
CO, Tipperary,  
Ireland

Telephone: (353) 0505-23292

Fax: (353) 0505-23299

Ireland@Kentmaster.com

---

Kentmaster Equipment (NZ) LTD.

5 Cooper Street  
Havelock North  
New Zealand

Telephone #1: (64) 6 8777 857

Telephone #2: 0800 KENTMASTER

Fax: (64) 6 8777 858

NewZealand@Kentmaster.com

---

Kentmaster South Africa (PTY) LTD.

Johannesburg - S. Africa  
Unit 54 Sunnyrock Park  
Sunrock Close, Germiston  
South Africa

Telephone: (27) 11-455-3748

Fax: (27) 11-455-3749

SouthAfrica@Kentmaster.com

---

Kentmaster (UK ) LTD.

Unit 16 Avonbank Ind. Centre  
West Town Rd, Avonmouth-Bristol,  
BS11 9DE  
England

Telephone: (44) 117-923-5035

Fax: (44)-117-932-9010

UK@Kentmaster.com

---

Kentmaster Mfg. Co., Inc.

1801 South Mountain Ave.  
Monrovia, CA, 91016  
USA

Telephone #1: (626) 359-8888

Telephone #2: (800) 421-1477

Fax: (626) 303-5151

info@Kentmaster.com

---

Kentmaster Omaha

4417 South 139th Street  
Omaha, NE, 68137  
USA

Telephone #1: (402) 896-3355

Telephone #2: (800) 367-3181

Fax: (402) 896-3311

Omaha@Kentmaster.com

---

**INDEX**

<b>OPERATING AND SAFETY INSTRUCTIONS</b> .....	<b>2</b>
<b>OPERATING INSTRUCTIONS</b> .....	<b>3</b>
<b>SERVICE</b> .....	<b>3</b>
<b>PARTS BOOK</b> .....	<b>4</b>
<b>MOTOR OPTIONS</b> .....	<b>8</b>
<b>HANDLE / CONTROL OPTIONS</b> .....	<b>9</b>
ELECTRIC HANDLES w/o ATD.....	9
ELECTRIC HANDLES w/ATD.....	9
AIR HANDLES w/o ATD.....	11
AIR HANDLES w/ATD.....	12
<b>POWER SUPPLY</b> .....	<b>14</b>
POWER SUPPLY, NO ATD.....	14
POWER SUPPLY, ATD .....	14
POWER SUPPLY, 42V, NO ATD .....	15
POWER SUPPLY, 42V, ATD .....	15
<b>WIRING DIAGRAMS</b> .....	<b>16</b>
DIFFERENT CONTROL AND MOTOR VOLTAGE, w/o ATD .....	17
SAME CONTROL AND MOTOR VOLTAGE, w/o ATD .....	18
DIFFERENT CONTROL AND MOTOR VOLTAGE, with ATD .....	19
SAME CONTROL AND MOTOR VOLTAGE, with ATD .....	20
AIR, DIFFERENT CONTROL AND MOTOR VOLTAGE, w/o ATD .....	21
AIR, SAME CONTROL AND MOTOR VOLTAGE, w/o ATD.....	22
AIR, DIFFERENT CONTROL AND MOTOR VOLTAGE, with ATD .....	23
AIR, SAME CONTROL AND MOTOR VOLTAGE, with ATD.....	24
<b>GENERAL INFORMATION</b> .....	<b>27</b>
<b>DECLARATION OF CONFORMITY</b> .....	<b>28</b>
<b>Kentmaster Worldwide Location</b> .....	<b>29</b>
<b>INDEX</b> .....	<b>30</b>
<b>FIGURES - INDEX</b> .....	<b>31</b>

## FIGURES - INDEX

Figure 1 MODEL EBB-II – BLADE REPLACEMENT .....	3
Figure 2 MODEL “EBB-II” – MAIN ASSEMBLY .....	4
Figure 3 BOM FOR MODEL “EBB-II” .....	5
Figure 4 6552020: HOUSING ASSEMBLY .....	6
Figure 5 6552010: DRIVE LINK .....	7
Figure 6 1081012: MOTOR BASE .....	7
Figure 7 MOTOR ASSEMBLY .....	8
Figure 8 1080030: ELECTRIC HANDLES w/o ATD .....	9
Figure 9 1080032: ELECTRIC HANDLES w/ATD .....	9
Figure 10 1080024: REAR ELECTRIC HANDLE .....	10
Figure 11 1080029: FRONT ELECTRIC HANDLE .....	10
Figure 12 1080031: AIR HANDLES w/o ATD .....	11
Figure 13 1080033: AIR HANDLES w/ATD .....	12
Figure 14 6600530: AIR HANDLE, REAR .....	13
Figure 15 6551340: AIR HANDLE, FRONT .....	13
Figure 16 1080034: POWER SUPPLY, NO ATD .....	14
Figure 17 1080035: POWER SUPPLY, ATD .....	14
Figure 18 1080036: POWER SUPPLY, 42V, NO ATD .....	15
Figure 19 1080037: POWER SUPPLY, 42V, ATD .....	15
Figure 20 ELECTRIC MOTOR LEAD HOOKUP DIAGRAM .....	16
Figure 21 WIRING DIAGRAM – different control and motor voltage, w/o ATD .....	17
Figure 22 WIRING DIAGRAM – same control and motor voltage, w/o ATD .....	18
Figure 23 WIRING DIAGRAM – different control and motor voltage, with ATD .....	19
Figure 24 WIRING DIAGRAM – same control and motor voltage, with ATD .....	20
Figure 25 WIRING DIAGRAM – Air, different control and motor voltage, w/o ATD .....	21
Figure 26 WIRING DIAGRAM – Air, same control and motor voltage, w/o ATD .....	22
Figure 27 WIRING DIAGRAM – Air, different control and motor voltage, with ATD .....	23