

JS-650

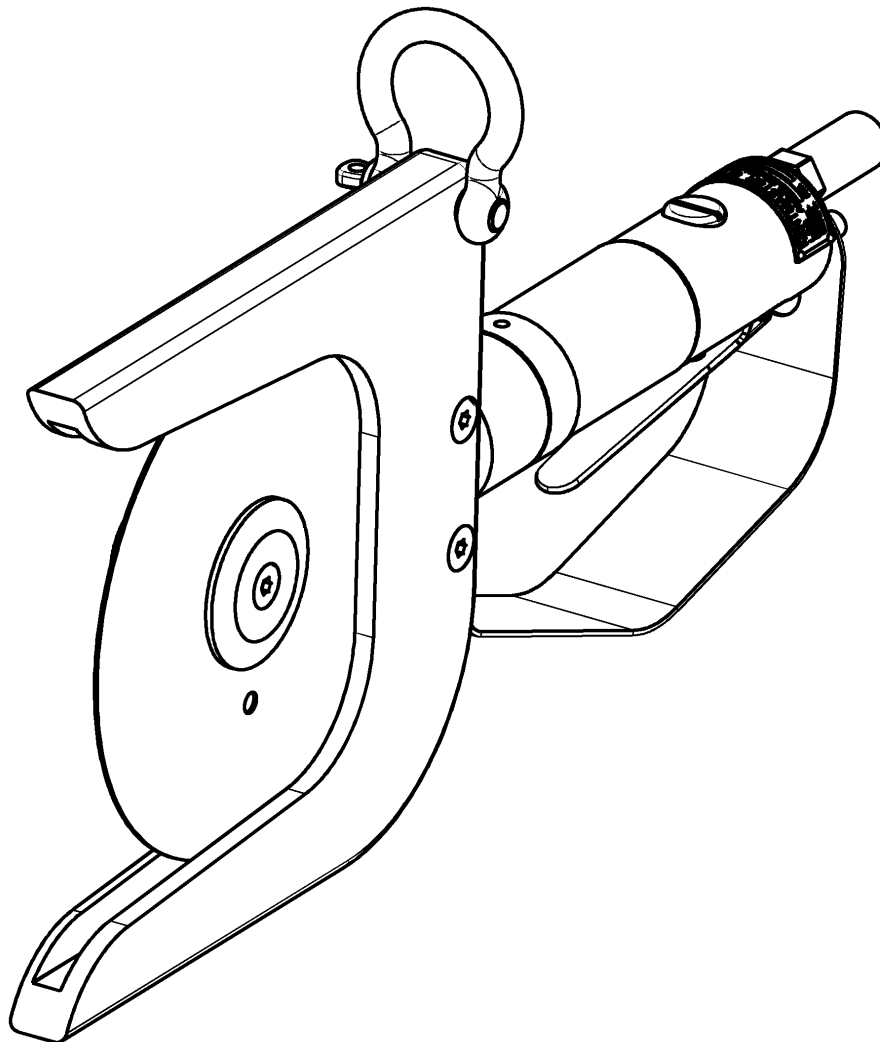
INCLUDING: OPERATION, INSTRUCTION, INSTALLATION, MAINTENANCE AND PARTSBOOK

IMPORTANT: READ THIS MANUAL CAREFULLY BEFORE INSTALLING, OPERATING OR SERVICING THIS TOOL.

CIRCULAR JOWL SLICER - AIR

TOOL DATA

MODEL: JS-650
ASSEMBY NO. 6220300
TYPE: AIR OPERATED
NET WEIGHT: 6.5 Lbs (2.9 kg)
INLET AIR PRESSURE: 90 P.S.I. (6 BARS)



= Hazards or unsafe practices which could result in severe personal injury, death or substantial property damage.

= Hazards or unsafe practices which could result in minor personal injury, product or property damage.

= Important installation, operation or maintenance information.

OPERATING AND SAFETY INSTRUCTIONS

WARNING

DO NOT OPERATE THIS TOOL UNTIL YOU HAVE READ AND UNDERSTOOD THE SAFETY INSTRUCTIONS AND OPERATING MANUALS.

WARNING

DO NOT OPERATE THIS TOOL UNTIL YOU HAVE RECEIVED TRAINING IN THE HANDLING, OPERATION AND USE OF THIS TOOL.

WARNING

STOP USING A MALFUNCTIONING OR DEFECTIVE TOOL IMMEDIATELY. REPORT ANY PROBLEMS OR DEFECTS TO YOUR SUPERVISOR FOR REMOVAL OF THE TOOL FROM SERVICE.

WARNING

DO NOT ATTEMPT TO REPAIR THE TOOL YOURSELF.

WARNING

DO NOT ALLOW UNAUTHORIZED PERSONS TO USE TOOL.

WARNING

REMOVE AND DISCONNECT POWER FROM THE TOOL WHEN TOOL IS LEFT UNATTENDED OR IS NOT IN USE.

WARNING

NEVER TIE DOWN, BYPASS, ALTER OR MODIFY THE ACTIVATING SWITCHES OR TRIGGERS OF THIS TOOL.

WARNING

NEVER MAKE ALTERATIONS OR MODIFICATIONS TO THIS TOOL.

WARNING

BE CONSTANTLY AWARE AND ALERT FOR UNSAFE CONDITIONS AND REPORT THEM IMMEDIATELY TO YOUR SUPERVISOR.

WARNING

NEVER PLACE YOUR HAND OR ANY PART OF YOUR BODY IN THE CUTTING PATH OF THE TOOL.

WARNING

NEVER ALLOW ANYONE ELSE TO PLACE THEIR HANDS OR ANY PART OF THEIR BODY IN THE CUTTING PATH OF THE TOOL.

WARNING

DO NOT ACTIVATE CONTROL SWITCHES OR TRIGGERS OF THIS TOOL UNLESS YOU INTEND TO TEST OR OPERATE THIS TOOL.

WARNING

DO NOT USE THIS TOOL FOR ANY PURPOSE OTHER THAN IT'S INTENDED PURPOSE.

CAUTION

WHEN OPERATING THIS TOOL WEAR THE PROTECTIVE GEAR AND SAFETY EQUIPMENT SUPPLIED TO YOU.

WARNING

THE NOISE EMISSION (SOUND PRESSURE LEVEL) AT THE WORKSTATION MAY EXCEED 80 dB (A). EAR AND SOUND PROTECTION GEAR IS REQUIRED.

OPERATING INSTRUCTIONS

⚠ WARNING ONLY TRAINED PERSONNEL ARE TO OPERATE THIS TOOL.

1. TO ENSURE TOOL IS OPERATING PROPERLY, PERFORM FOLLOWING STEPS AT START OF EACH SHIFT:
 - MAKE SURE TOOL MOVES UP AND DOWN FREELY WHILE HANGING FROM BALANCER OVERHEAD.
 - WITH POWER TO TOOL TURNED ON, TEST TRIGGER FOR PROPER OPERATION.
 - DEPRESS EACH TRIGGER SEPARATELY. TOOL SHOULD NOT ACTIVATE. DEPRESS BOTH TRIGGERS. TOOL SHOULD ACTIVATE.
 - IF TOOL HAS "ANTI-TIE DOWN" OPTION, BOTH TRIGGERS MUST BE DEPRESSED SIMULTANEOUSLY FOR TOOL TO ACTIVATE.
2. TO PERFORM WORK, HOLD TOOL FIRMLY AT BOTH HANDLES. SQUEEZE TRIGGERS TO ACTIVATE TOOL.
3. DO NOT EXERT EXCESSIVE PRESSURE. ALLOW TIME FOR THE TOOL TO CUT.
4. TOOL REQUIRES 40 S.C.F.M. OF AIR @ 90 P.S.I. AIR PRESSURE.

MAINTENANCE

⚠ WARNING ONLY TRAINED AND QUALIFIED PERSONNEL ARE TO PERFORM MAINTENANCE AND SERVICE TO THIS TOOL.

1. FILL LUBRICATOR WITH KENTMASTER AIR MIST OIL (PART NO. 7903050). SET DRIP RATE ACCORDING TO INSTRUCTIONS SUPPLIED.
2. TOOL REQUIRES GREASING AT START OF EVERY SHIFT. GREASE USING KENTMASTER GREASE (PART NO. 7903070).
3. FLUSH AIR MOTOR AT END OF EACH DAY'S USE BY SQUIRTING A FEW SQUIRTS OF KENTMASTER AIR OIL MIST (PART NO. 7903050) DIRECTLY INTO THE AIR INLET PORT. RUN TOOL A FEW SECONDS TO COAT AND PROTECT THE AIR MOTOR AND INTERNAL PARTS OF TOOL.

BLADE REMOVAL AND CLEANING.

⚠ WARNING ALWAYS DISCONNECT POWER SUPPLY FROM TOOL BEFORE INSTALLING OR REMOVING BLADE FROM TOOL.

⚠ WARNING ALWAYS WEAR WIRE MESH GLOVES WHEN INSTALLING OR REMOVING BLADE FROM TOOL.

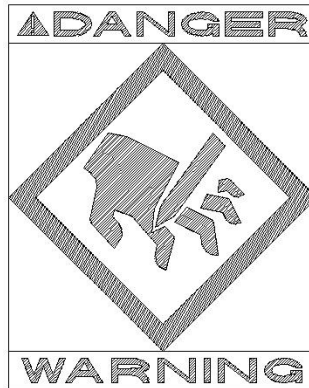
1. TO REMOVE BLADE: REMOVE SCREW, ITEM 28, BLADE HOLDER, ITEM 2 AND BLADE, ITEM 1 (FIGURE 1).
2. CLEAN ALL PARTS REMOVED WITH SOAP AND WATER.
3. SHARPEN OR REPLACE BLADE WHEN NECESSARY AND LUBRICATE ALL PARTS.
4. REASSEMBLE ALL PARTS IN REVERSE ORDER.

AT END OF EACH SHIFT:

1. REMOVE SAW BLADE.
2. IF USING BLADE AGAIN, WASH BLADE WITH HOT WATER TO REMOVE FAT, MEAT AND BONE PARTICLES.
3. DRY AND APPLY A COAT OF MINERAL OIL TO ENTIRE SURFACE OF BLADE TO AVOID OXIDATION.

SERVICE

1. KEEP GOOD RECORDS OF ALL SERVICE ACTIVITY AND INCLUDE TOOL IN PREVENTIVE MAINTENANCE PROGRAM.
2. USE ONLY GENUINE KENTMASTER REPLACEMENT PARTS TO ASSURE PROPER PERFORMANCE OF TOOL.
3. CONTACT THE KENTMASTER SUPPLIER NEAREST YOU FOR PARTS AND CUSTOMER SERVICE INFORMATION.



PARTS BOOK

MODEL JS-650, CIRCULAR JOWL SLICER

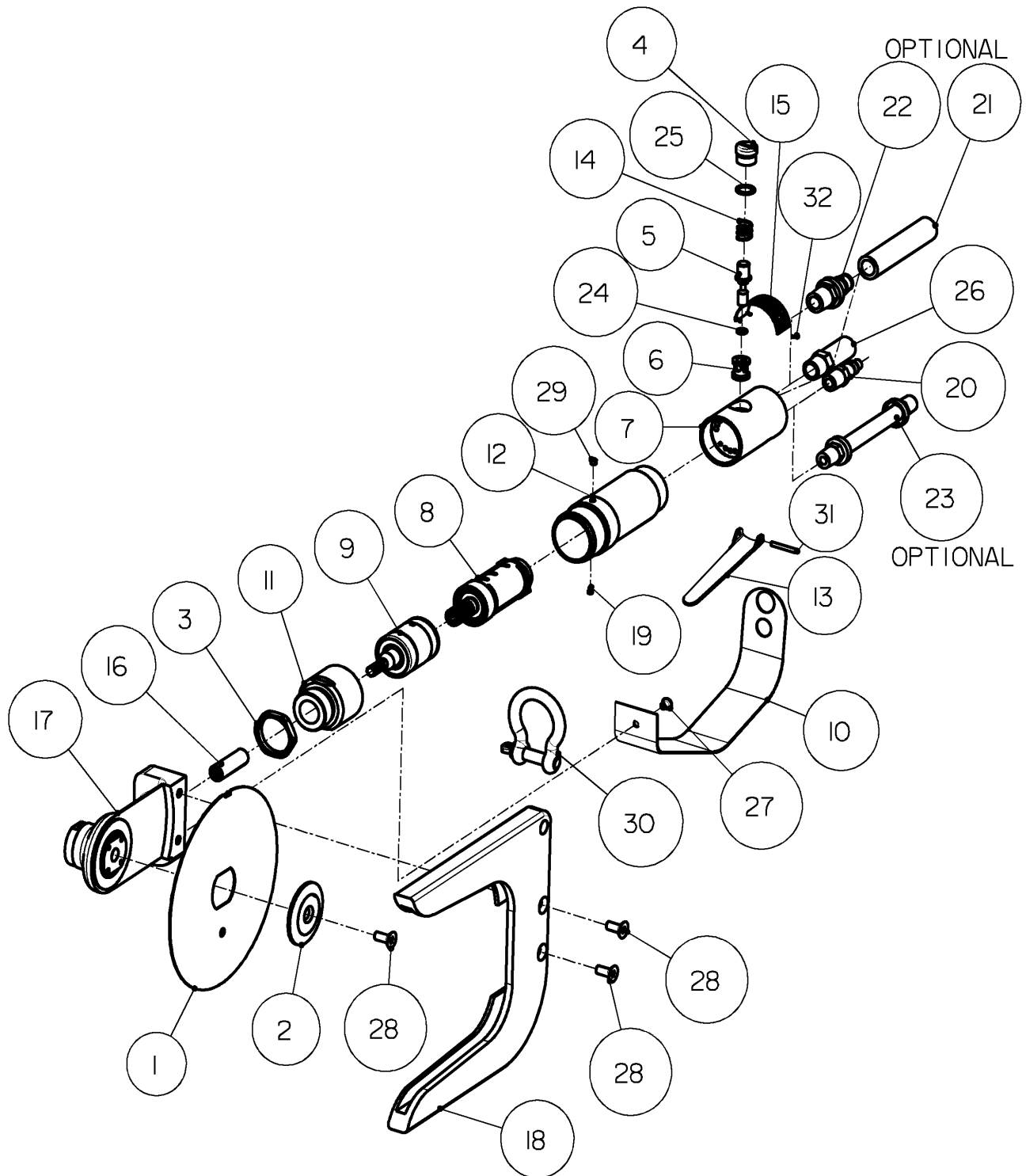
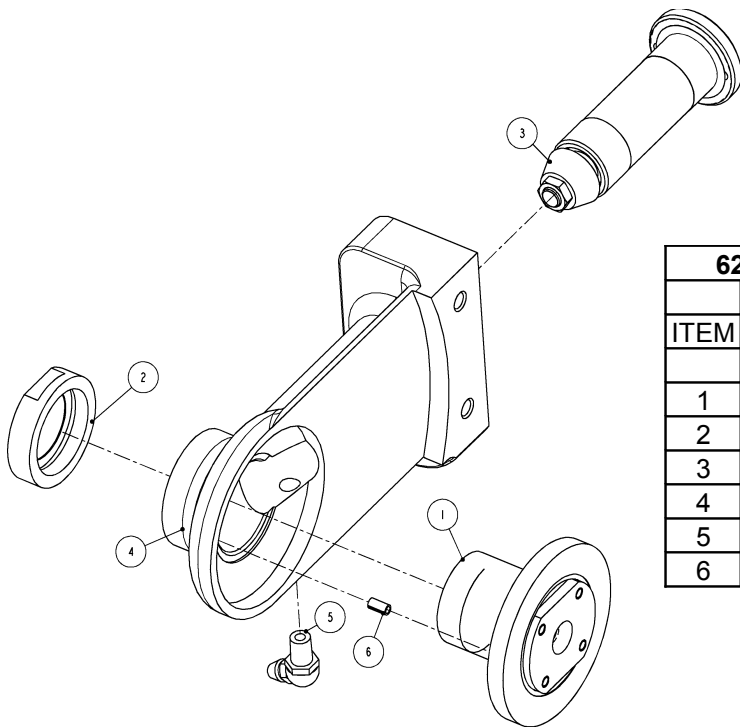


Figure 1 MODEL JS-650

6220300: JS-650, JOWL SLICER, AIR			
ITEM	PART #	DESCRIPTION	QTY
1	4000050	6.5" SAW BLADE – 140 TEETH – STANDARD	1
	4000620	6.5" SAW BLADE – 70 TEETH	1
	4000050	6.5" SAW BLADE – SKIP TOOTH – 70 TEETH	1
2	6201120	HOLDER, BLADE	1
3	6201500	LOCK NUT	1
4	6201530	PLUG	1
5	6201540	VALVE	1
6	6201550	BUSHING, VALVE	1
7	6201560	BODY, VALVE	1
8	6210800	AIR MOTOR ASSEMBLY	1
9	6210810	PLANETARY GEAR ASSEMBLY	1
10	6211120	GUARD	1
11	6211500	ADAPTER	1
12	6211510	SHELL, MOTOR	1
13	6211670	LEVER	1
14	6211680	SPRING	1
15	6211690	NAME PLATE	1
16	6221010	COUPLING	1
17	6221090	GEAR HOUSING ASSEMBLY 6.5" BLADE	1
18	6221300	JOWL SLICER GUIDE	1
19	7014050	FITTING, LUBRICATION	1
20	7034070	MALE PLUG	1
21	7301850	HOSE – OPTIONAL	1
22	7301860	FITTING – OPTIONAL	1
23	7310600	HOSE ASSEMBLY – OPTIONAL	1
24	7680090	O-RING	1
25	7680140	O-RING	1
26	7802220	MUFFLER	1
27	8029020	SCREW	1
28	8241050	SCREW	3
29	8335000	SET SCREW	1
30	8462040	ANCHOR SHACKLE	1
31	8620080	PIN	1
32	8640030	DRIVE SCREW	4

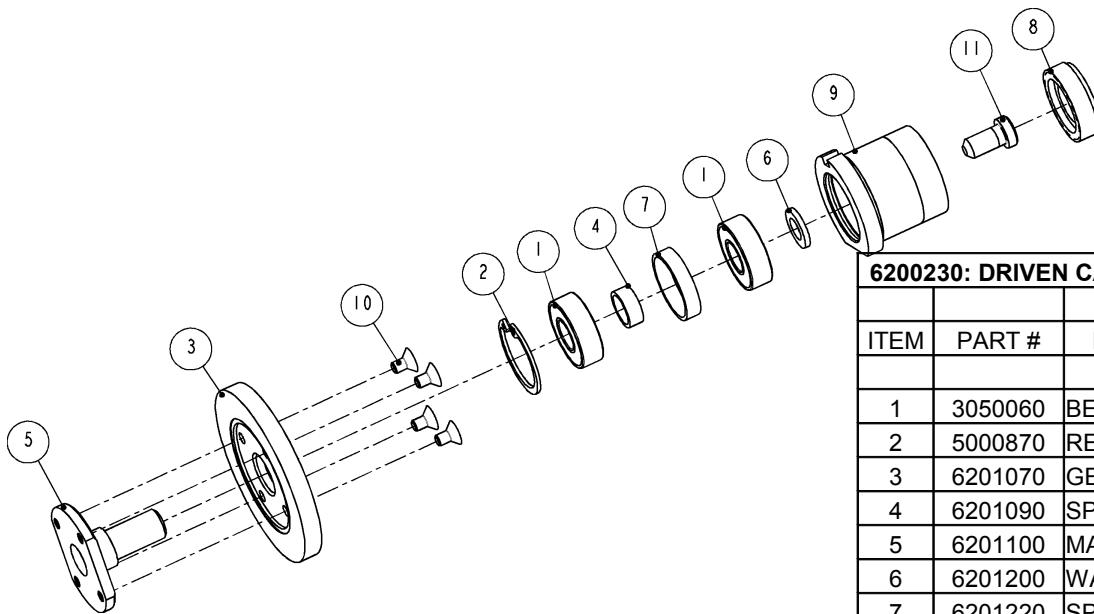
Figure 2 BOM FOR MODEL JS-650

GEARS AND GEAR HOUSING ASSEMBLY



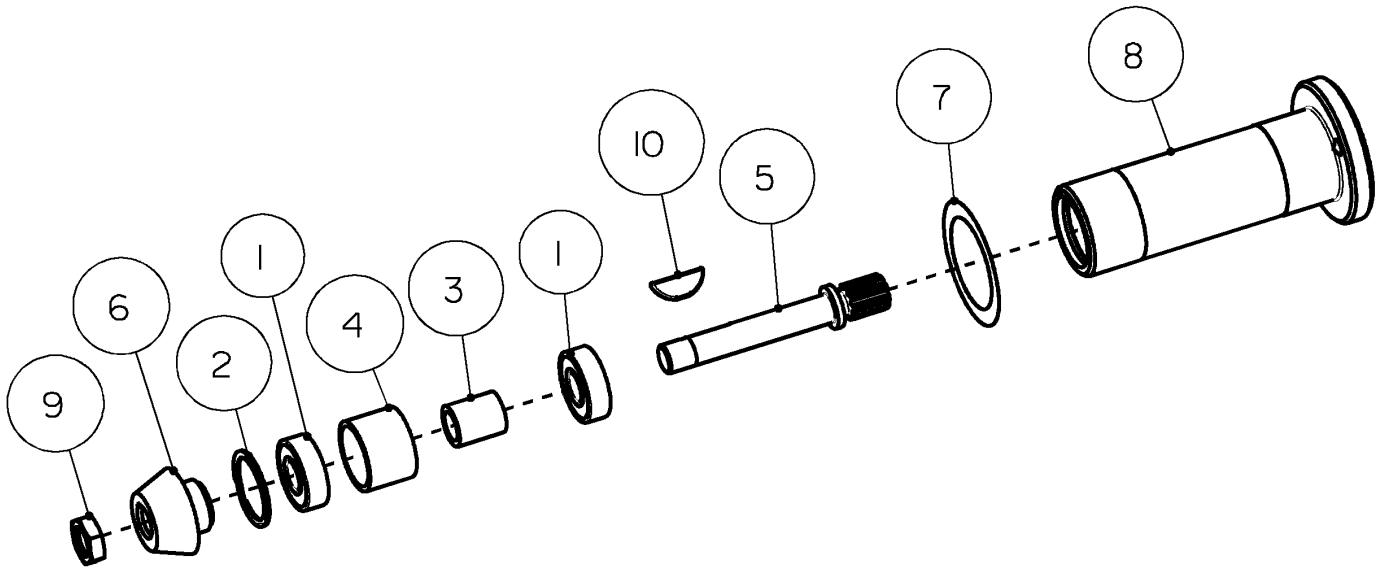
6221090: GEAR HOUSING ASSEMBLY 6.5" BLADE			
ITEM	PART #	DESCRIPTION	QTY
1	6200230	DRIVEN CARTRIDGE ASSEMBLY	1
2	6201110	HOLDER, SLEEVE	1
3	6220201	DRIVE CARTRIDGE	1
4	6221000	HOUSING, GEAR	1
5	7014060	LUBE FITTING	1
6	8612050	ROLL PIN	1

Figure 3 6201250: GEAR HOUSING ASSEMBLY



6200230: DRIVEN CARTRIDGE ASSEMBLY			
ITEM	PART #	DESCRIPTION	QTY
1	3050060	BEARING	2
2	5000870	RETAINING RING	1
3	6201070	GEAR, BEVEL	1
4	6201090	SPACER	1
5	6201100	MANDREL, SAW	1
6	6201200	WASHER	1
7	6201220	SPACER	1
8	6201230	RETAINER NUT	1
9	6201240	SLEEVE	1
10	8236020	SCREW	4
11	8255460	SCREW	1

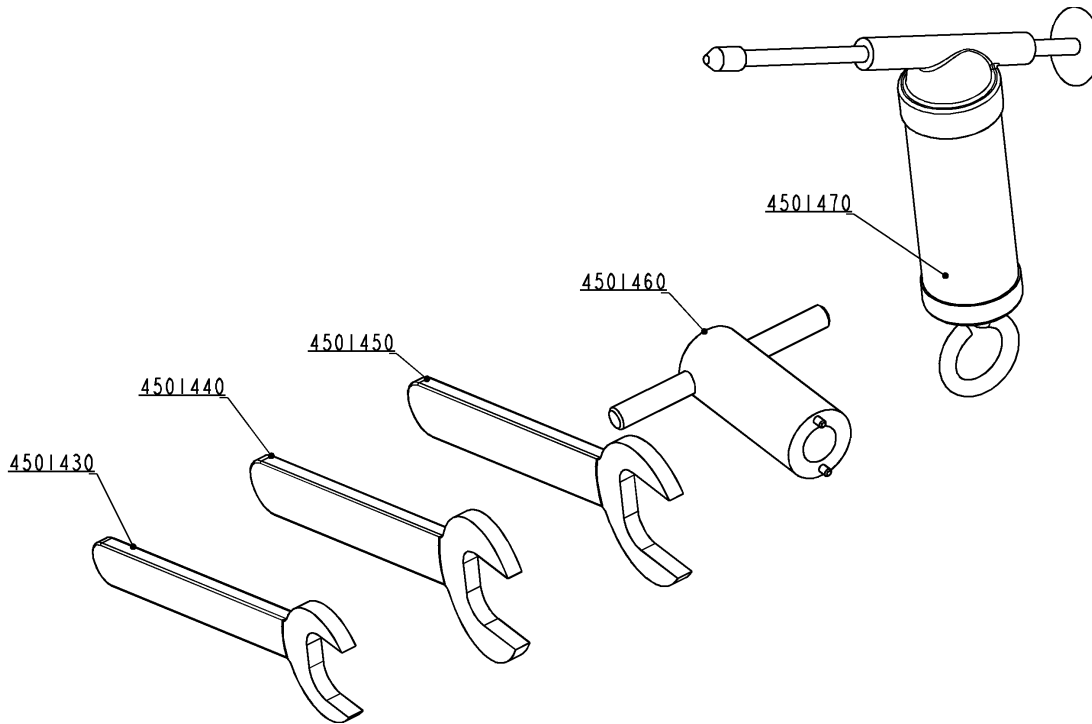
Figure 4 6200230: DRIVEN CARTRIDGE ASSEMBLY



6220201: DRIVE CARTRIDGE ASSEMBLY			
ITEM	PART #	DESCRIPTION	QTY
1	3050040	BEARING	2
2	5630620	RETAINING RING	1
3	6201030	SPACER	1
4	6201040	SPACER	1
5	6201050	DRIVE SHAFT	1
6	6201060	PINION GEAR	1
7	6201210	SHIM WASHER	1
8	6221021	SLEEVE	1
9	8503120	NUT	1
10	8600420	KEY	1

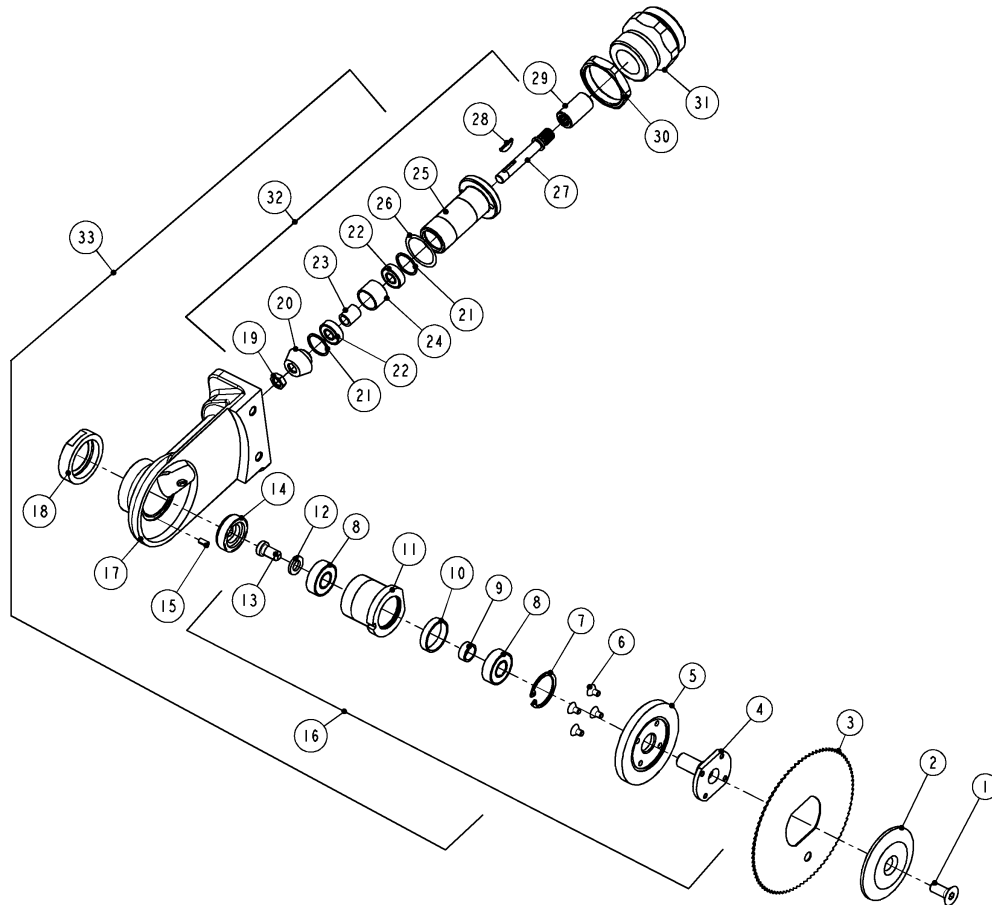
Figure 5 6220201: DRIVE CARTRIDGE ASSEMBLY

SPECIAL TOOLS (OPTIONAL)



4501470	GREASE GUN
4501460	WRENCH, DRIVE SHAFT SLEEVE
4501450	WRENCH, ADAPTER (1-1/2)
4501440	WRENCH, LOCKNUT (1-3/8)
4501430	WRENCH, SLEEVE HOLDER (1-1/4)
ITEM	DESCRIPTION
SPECIAL TOOLS (OPTIONAL)	

Figure 6 : SPECIAL TOOLS (OPTIONAL)



GEAR HOUSING DISASSEMBLY

ALWAYS WEAR WIRE MESH GLOVES WHEN INSTALLING OR REMOVING BLADE FROM TOOL.

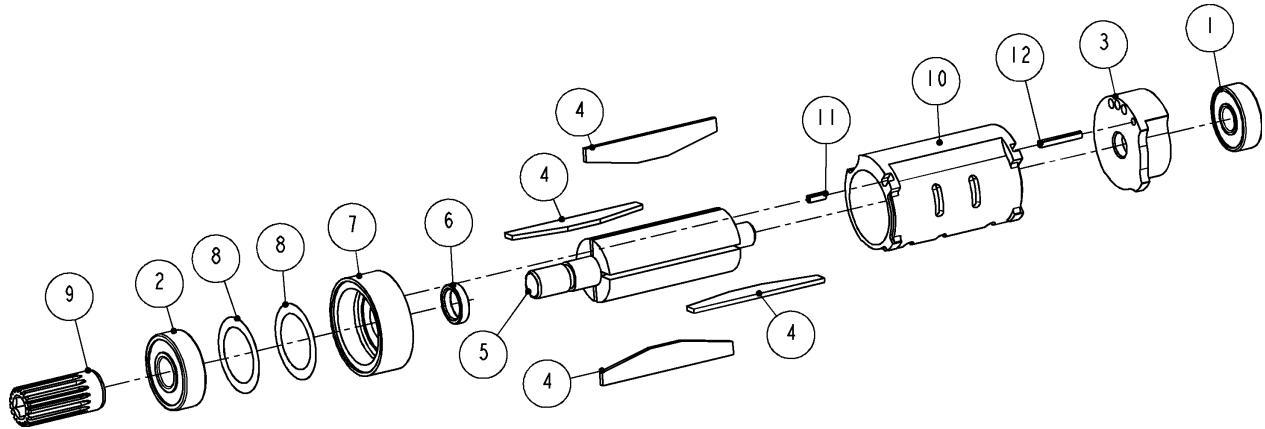
- ⚠ WARNING** REMOVE SCREW, HOLDER AND BLADE, ITEMS 1-3.
2. REMOVE HOLDER, ITEM 18. THE CARTRIDGE ASSEMBLY, ITEM 16, SHOULD JUST SLIDE OUT.
 3. REMOVE NUT AND SCREW, ITEMS 13 AND 14.
 4. PRESS MANDREL, ITEM 4, OUT THRU BEARINGS, ITEM 8.
 5. REMOVE (4) SCREWS, ITEM 6, TO DISASSEMBLE GEAR AND MANDREL, ITEMS 4 AND 5.
 6. REMOVE RETAINING RING, ITEM 7, PRIOR TO PRESSING OUT BEARINGS, ITEM 8.
 7. LOOSEN LOCKNUT, ITEM 30, AND REMOVE ADAPTOR, ITEM 31.
 8. USING WRENCH, ITEM 4501460, SCREW OUT CARTRIDGE ASSEMBLY, ITEM 32.
 9. REMOVE NUT, ITEM 19. GEAR, ITEM 20, SHOULD JUST COME OFF.
 10. PRESS OUT KEY AND SHAFT, ITEMS 27 & 28.
 11. REMOVE (1) RETAINING RING IN THE FRONT, ITEM 21, PRIOR TO PRESSING OUT BEARINGS AND SPACERS, ITEMS 22-24. (ITEM 21 IN THE BACK ONLY WITH CARTRIDGE 6220200. CARTRIDGE 6220201 HAS ONLY ONE RETAINING RING IN THE FRONT)

GEAR HOUSING REASSEMBLY

1. SHARPEN OR REPLACE BLADE AS NECESSARY.
2. CLEAN AND LUBRICATE ALL PARTS.
3. REPLACE PARTS AS NEEDED.
4. REASSEMBLE PARTS IN REVERSE ORDER.

Figure 7 GEAR HOUSING ASSEMBLY PROCESS

AIR MOTOR ASSEMBLY



6210800: MOTOR ASSEMBLY, SC-550 & SC-650			
ITEM	PART #	DESCRIPTION	QTY
1	3072380	BEARING	1
2	3122000	BEARING	1
3	6201590	PLATE, REAR BEARING	1
4	6211520	BLADE, MOTOR	4
5	6211530	ROTOR	1
6	6211540	SPACER, ROTOR	1
7	6211550	PLATE, FRONT BEARING	1
8	6211560	SHIM	2
9	6211570	GEAR	1
10	6211610	CYLINDER	1
11	8611540	ROLL PIN	1
12	8611600	ROLL PIN	1

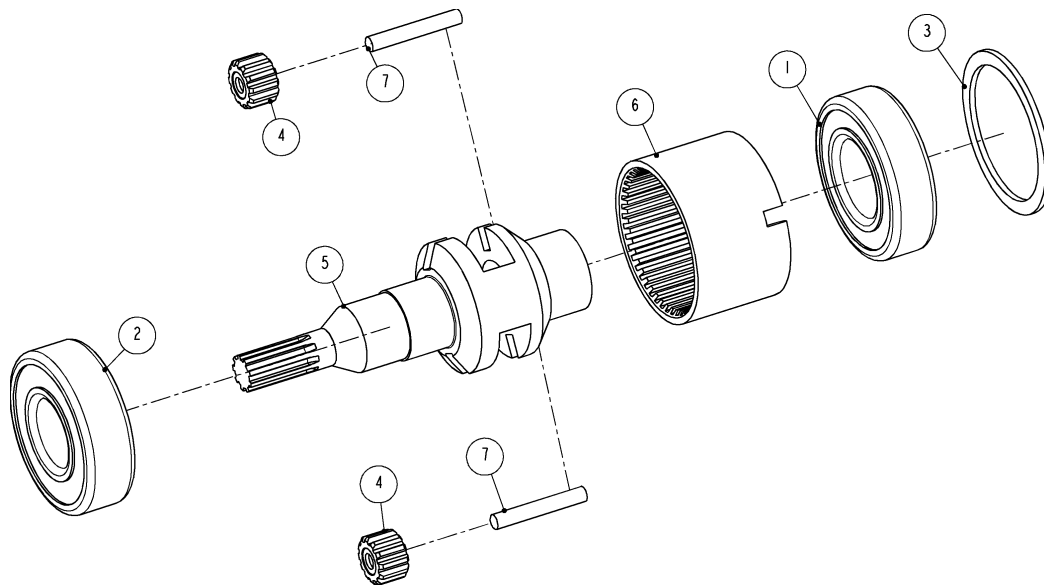
MOTOR DISASSEMBLY

1. TO DISASSEMBLE, PRESS ROTOR, ITEM 5, OUT THRU BEARING, ITEM 1. MOTOR ASSEMBLY SHOULD SLIDE APART.
2. TO SEPARATE ADAPTOR FROM ROTOR, ITEMS 5 AND 6, REMOVE BLADES, ITEM 4. INSERT A PIECE OF MATERIAL ABOUT .06" THICK (1.5mm) INTO BLADE SLOT. IT SHOULD EXTEND ABOUT 1/2" (12mm) ABOVE ROTOR SURFACE. PLACE IN VISE WITH ***SOFT JAWS***. THIS WILL PREVENT ROTOR FROM TURNING WHEN REMOVING ADAPTOR WITH A WRENCH.
3. PRESS ROTOR, ITEM 5, OUT OF BEARING, ITEM 2.

MOTOR REASSEMBLY

1. CLEAN AND LUBRICATE ALL PARTS.
2. REPLACE PARTS AS NEEDED.
3. REASSEMBLE PARTS IN REVERSE ORDER.

Figure 8 6210800: AIR MOTOR ASSEMBLY, SC-550 & SC-650

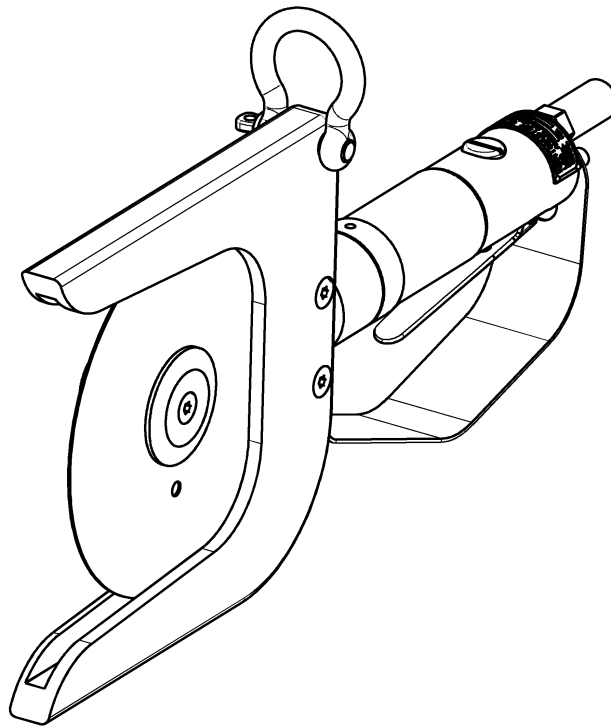


6210810: PLANETARY GEAR			
ITEM	PART #	DESCRIPTION	QTY
1	3124030	BEARING	1
2	3204020	BEARING	1
3	6211580	SPACER	1
4	6211590	IDLER GEAR ASSEMBLY	2
5	6211620	PLANETARY CARRIER	1
6	6211630	GEAR, RING	1
7	8620060	PIN, PLANETARY GEAR	2

Figure 9 6210810: PLANETARY GEAR ASSEMBLY

[ENGLISH]

GENERAL INFORMATION



MODELS

JS-650 : CIRCULAR JOWL SLICER – AIR (6220300)

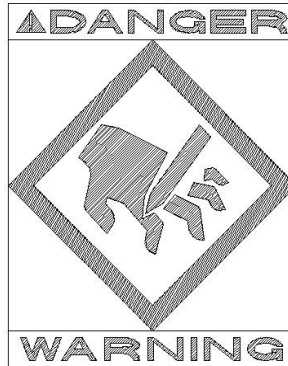
SERVICE CENTER

KENTMASTER MFG. CO., INC.
1801 SOUTH MOUNTAIN AVE.
MONROVIA, CALIFORNIA 910016
UNITED STATES OF AMERICA

☎ **TELEPHONE: (626) 359-8888**
FAX: (626) 303-5151

NOTICE TO EMPLOYER AND PURCHASER OF TOOL
NOTICE TO SAFETY DIRECTOR

You have purchased a powerful tool that, if misused, can cause severe injury and harm to your employees. You must instruct your employees in the safe and proper use of this tool and to follow the safety procedures and instructions that have been supplied by the manufacturer of this tool. Please follow the following instructions.



1. Instruct tool operators to test the tool each day before using it to be sure it does not malfunction. Remove and repair any tool that malfunctions.
2. Instruct tool operators to immediately stop using a tool that malfunctions or is defective.
3. Instruct personnel to immediately remove all tools that malfunction. Be sure to disconnect tool from power supply.
4. Instruct all personnel to stay clear of tool, and not to stand or walk in front of, or next to tool when in use.
5. Point out to all personnel the dangers related to the misuse of tool and the importance of following safety procedures and instructions.
6. Do not make, or allow others to make, alterations or modifications to this tool. Replace all lost or illegible labels.
7. Follow all safety, installation and maintenance instructions provided with this tool. Establish proper safety procedures in accordance with local and national requirements to prevent accidental energizing of tool that can cause injuries.
8. If this tool is sold or change in ownership takes place, you must provide the new owner all safety instructions, notices and maintenance instructions you were originally provided. You can obtain additional copies of the instructions from Kentmaster, free of charge upon request.
9. Give copies of instructions to: **(A) Tool Operators**
(B) Maintenance Supervisor
(C) Clean-up Supervisor

Kentmaster Worldwide Location

Kentmaster Equipment (Aust) PTY.LTD.

Unit 2,24 Central Court
Browns Plains Qld. 4118
Australia

Telephone: (07) 3806-8400
Fax: (07) 3806-7933
Australia@Kentmaster.com

Kentmaster do Brasil, Ltda.
Av. Dr. Joao Teodoro No. 805
Bairro De Vila Rezende
13405-240 Piracicaba, SP,
Brazil

Telephone #1: (019) 3 413 3113
Telephone #2: (019)983-4973
Fax: (019) 3 413 3113
Brazil@Kentmaster.com

Kentmaster (IRL) LTD.
Benamore, Dublin Road.
Roscrea,
CO, Tipperary,
Ireland

Telephone: (353) 0505-23292
Fax: (353) 0505-23299
Ireland@Kentmaster.com

Kentmaster Equipment (NZ) LTD.
5 Cooper Street
Havelock North
New Zealand

Telephone #1: (64) 6 8777 857
Telephone #2: 0800 KENTMASTER
Fax: (64) 6 8777 858
NewZealand@Kentmaster.com

Kentmaster South Africa (PTY) LTD.
Johannesburg - S. Africa
Unit 54 Sunnyrock Park
Sunrock Close, Germiston
South Africa

Telephone: (27) 11-455-3748
Fax: (27) 11-455-3749
SouthAfrica@Kentmaster.com

Kentmaster (UK) LTD.
Unit 16 Avonbank Ind. Centre
West Town Rd, Avonmouth-Bristol,
BS11 9DE
England

Telephone: (44) 117-923-5035
Fax: (44)-117-932-9010
UK@Kentmaster.com

Kentmaster Mfg. Co., Inc.
1801 South Mountain Ave.
Monrovia, CA, 91016
USA

Telephone #1: (626) 359-8888
Telephone #2: (800) 421-1477
Fax: (626) 303-5151
info@Kentmaster.com

Kentmaster Omaha
4417 South 139th Street
Omaha, NE, 68137
USA

Telephone #1: (402) 896-3355
Telephone #2: (800) 367-3181
Fax: (402) 896-3311
Omaha@Kentmaster.com

INDEX

<i>OPERATING AND SAFETY INSTRUCTIONS</i>	2
OPERATING INSTRUCTIONS.....	3
MAINTENANCE.....	3
<i>SERVICE</i>	4
<i>PARTS BOOK</i>	4
<i>MODEL JS-650, CIRCULAR JOWL SLICER</i>	5
GEARS AND GEAR HOUSING ASSEMBLY.....	7
SPECIAL TOOLS (OPTIONAL).....	9
GEAR HOUSING DISASSEMBLY.....	10
GEAR HOUSING REASSEMBLY.....	10
AIR MOTOR ASSEMBLY.....	11
MOTOR DISASSEMBLY.....	11
MOTOR REASSEMBLY.....	11
<i>NOTICE TO EMPLOYER AND PURCHASER OF TOOL</i>	14
<i>Kentmaster Worldwide Location</i>	15
<i>INDEX</i>	16
<i>FIGURES - INDEX</i>	16

FIGURES - INDEX

<i>Figure 1 MODEL JS-650</i>	5
<i>Figure 2 BOM FOR MODEL JS-650</i>	6
<i>Figure 3 6201250: GEAR HOUSING ASSEMBLY</i>	7
<i>Figure 4 6200230: DRIVEN CARTRIDGE ASSEMBLY</i>	7
<i>Figure 5 6220201: DRIVE CARTRIDGE ASSEMBLY</i>	8
<i>Figure 6 : SPECIAL TOOLS (OPTIONAL)</i>	9
<i>Figure 7 GEAR HOUSING ASSEMBLY PROCESS</i>	10
<i>Figure 8 6210800: AIR MOTOR ASSEMBLY, SC-550 & SC-650</i>	11
<i>Figure 9 6210810: PLANETARY GEAR ASSEMBLY</i>	12