

# **BUNG GUN VACUUM SYSTEM**

**INCLUDING: OPERATION, INSTRUCTION, INSTALLATION, MAINTENANCE AND PARTSBOOK**

---

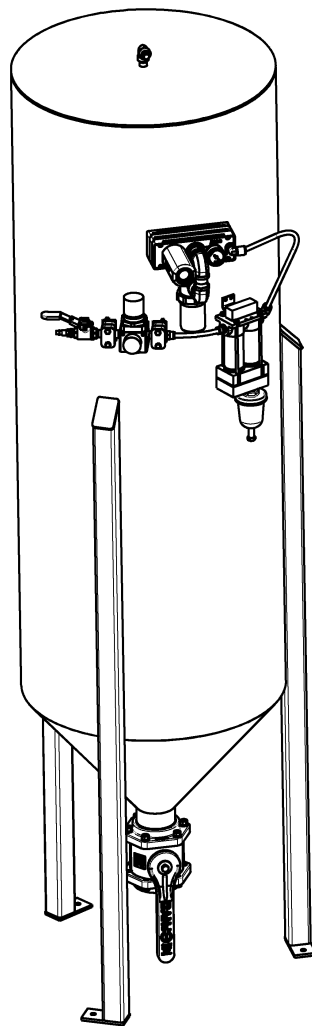
**IMPORTANT: READ THIS MANUAL CAREFULLY BEFORE INSTALLING, OPERATING OR  
SERVICING THIS TOOL.**

---

## **VACUUM SYSTEM**

### **TOOL DATA**

MODEL: KENTMASTER VACUUM SYSTEM  
ASSEMBLY NO: 6822000  
TYPE: AIR OPERATED  
NET WEIGHT: 300 LB ( 137 KG)



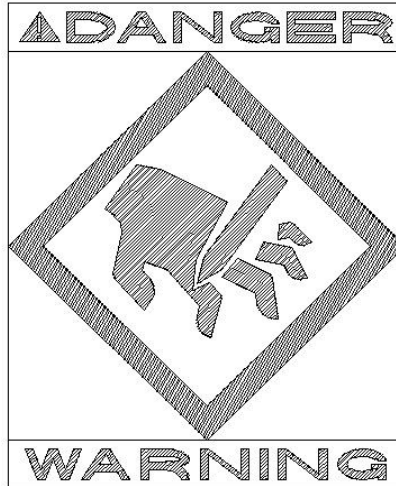
- = Hazards or unsafe practices which could result in severe personal injury, death or substantial property damage.
- = Hazards or unsafe practices which could result in minor personal injury, product or property damage.
- = Important installation, operation or maintenance information.

## OPERATING AND SAFETY INSTRUCTIONS

- ⚠ WARNING** DO NOT OPERATE THIS TOOL UNTIL YOU HAVE READ AND UNDERSTOOD THE SAFETY INSTRUCTIONS AND OPERATING MANUALS.
- ⚠ WARNING** DO NOT OPERATE THIS TOOL UNTIL YOU HAVE RECEIVED TRAINING IN THE HANDLING, OPERATION AND USE OF THIS TOOL.
- ⚠ WARNING** STOP USING A MALFUNCTIONING OR DEFECTIVE TOOL IMMEDIATELY. REPORT ANY PROBLEMS OR DEFECTS TO YOUR SUPERVISOR FOR REMOVAL OF THE TOOL FROM SERVICE.
- ⚠ WARNING** DO NOT ATTEMPT TO REPAIR THE TOOL YOURSELF.
- ⚠ WARNING** DO NOT ALLOW UNAUTHORIZED PERSONS TO USE TOOL.
- ⚠ WARNING** REMOVE AND DISCONNECT POWER FROM THE TOOL WHEN TOOL IS LEFT UNATTENDED OR IS NOT IN USE.
- ⚠ WARNING** NEVER TIE DOWN, BYPASS, ALTER OR MODIFY THE ACTIVATING SWITCHES OR TRIGGERS OF THIS TOOL.
- ⚠ WARNING** NEVER MAKE ALTERATIONS OR MODIFICATIONS TO THIS TOOL.
- ⚠ WARNING** BE CONSTANTLY AWARE AND ALERT FOR UNSAFE CONDITIONS AND REPORT THEM IMMEDIATELY TO YOUR SUPERVISOR.
- ⚠ WARNING** NEVER PLACE YOUR HAND OR ANY PART OF YOUR BODY IN THE CUTTING PATH OF THE TOOL.
- ⚠ WARNING** NEVER ALLOW ANYONE ELSE TO PLACE THEIR HANDS OR ANY PART OF THEIR BODY IN THE CUTTING PATH OF THE TOOL.
- ⚠ WARNING** DO NOT ACTIVATE CONTROL SWITCHES OR TRIGGERS OF THIS TOOL UNLESS YOU INTEND TO TEST OR OPERATE THIS TOOL.
- ⚠ WARNING** DO NOT USE THIS TOOL FOR ANY PURPOSE OTHER THAN IT'S INTENDED PURPOSE.
- ⚠ CAUTION** WHEN OPERATING THIS TOOL WEAR THE PROTECTIVE GEAR AND SAFETY EQUIPMENT SUPPLIED TO YOU.
- ⚠ WARNING** THE NOISE EMISSION (SOUND PRESSURE LEVEL) AT THE WORKSTATION MAY EXCEED 80 dB (A). EAR AND SOUND PROTECTION GEAR IS REQUIRED.

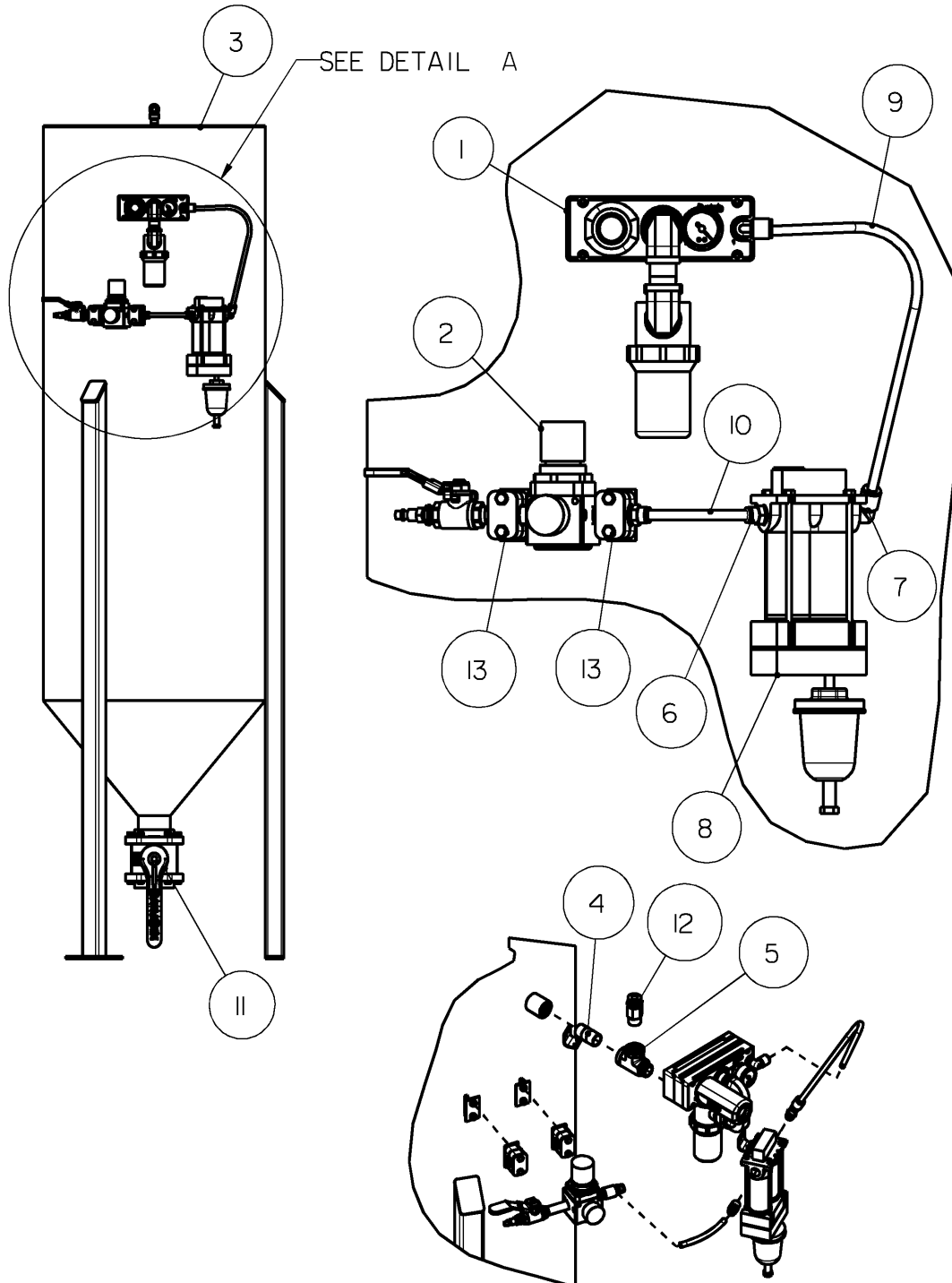
**SERVICE**

1. KEEP GOOD RECORDS OF ALL SERVICE ACTIVITY AND INCLUDE TOOL IN PREVENTIVE MAINTENANCE PROGRAM.
2. USE ONLY GENUINE KENTMASTER REPLACEMENT PARTS TO ASSURE PROPER PERFORMANCE OF TOOL.
3. CONTACT THE KENTMASTER SUPPLIER NEAREST YOU FOR PARTS AND CUSTOMER SERVICE INFORMATION.



# PARTS BOOK

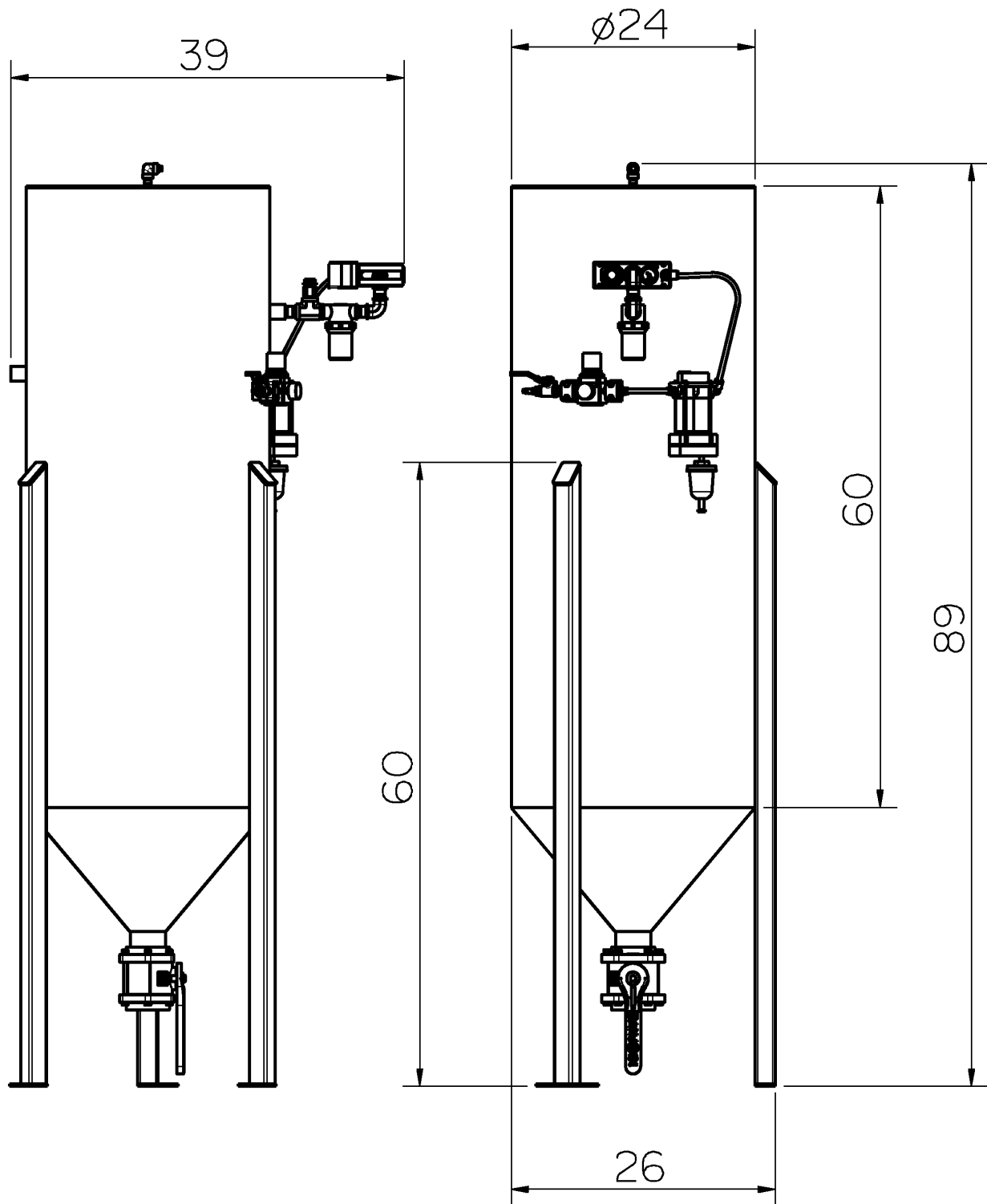
## "VACUUM SYSTEM" MAIN ASSEMBLY



**Figure 1 MODEL "VACUUM SYSTEM"**

<b>6822000: VACUUM SYSTEM</b>			
<b>ITEM</b>	<b>PART #</b>	<b>DESCRIPTION</b>	<b>QTY</b>
1	6822100	VACUUM PUMP w/FILTER ASSEMBLY	1
2	6822160	PRESSURE REGULATOR ASSEMBLY	1
3	6822200	CYCLON	1
4	7002000	NIPPLE	1
5	7004130	MALE RUN TEE	1
6	7036150	FITTING	1
7	7036450	ELBOW	1
8	7200360	AIR EXTRACTOR/DRYER	1
9	7300750	TUBING	1
10	7300756	TUBING	1
11	7804020	DISCHARGE VALVE	1
12	7808520	VACUUM RELIEF VALVE	1
13	7904040	CLAMP	2

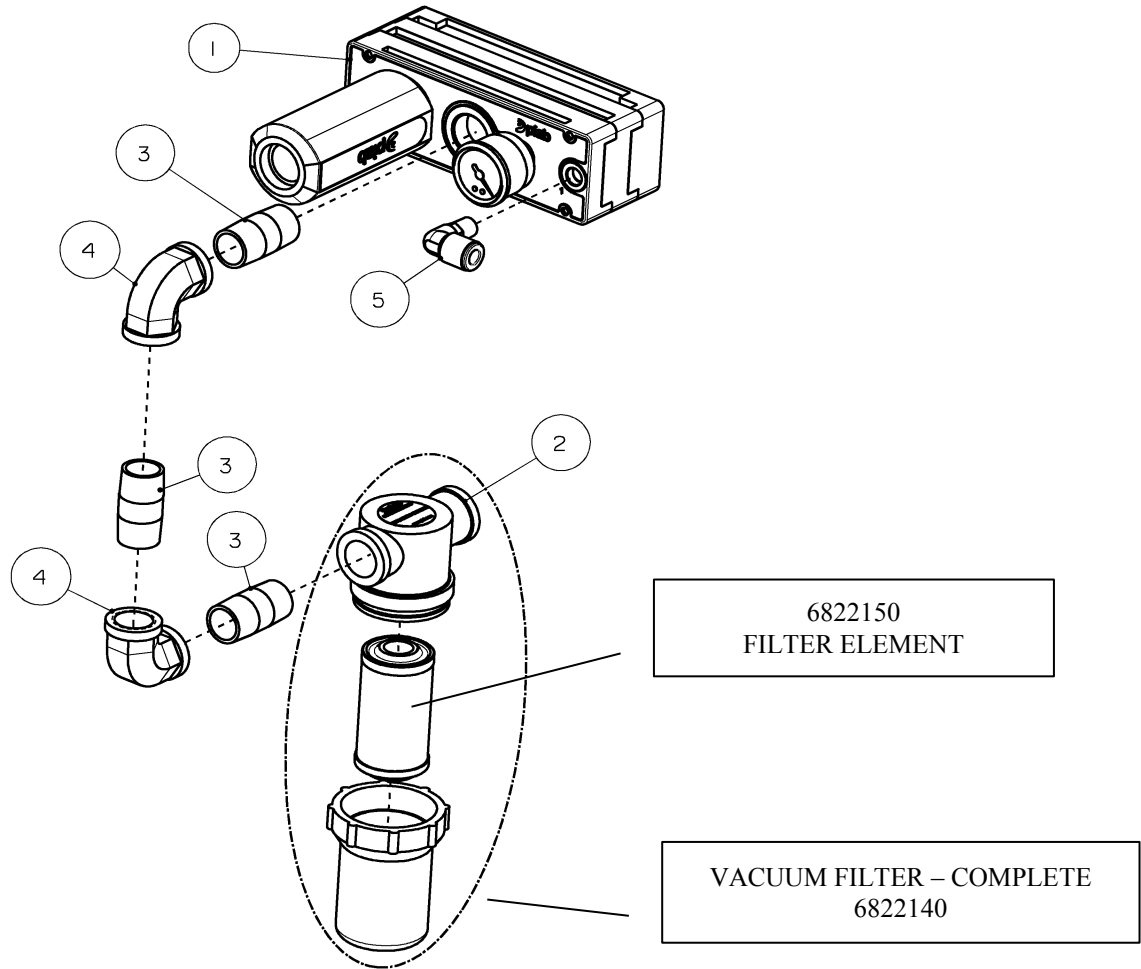
**Figure 2 BOM FOR MODEL “VACUUM SYSTEM”**



ALL DIMENSIONS IN INCHES

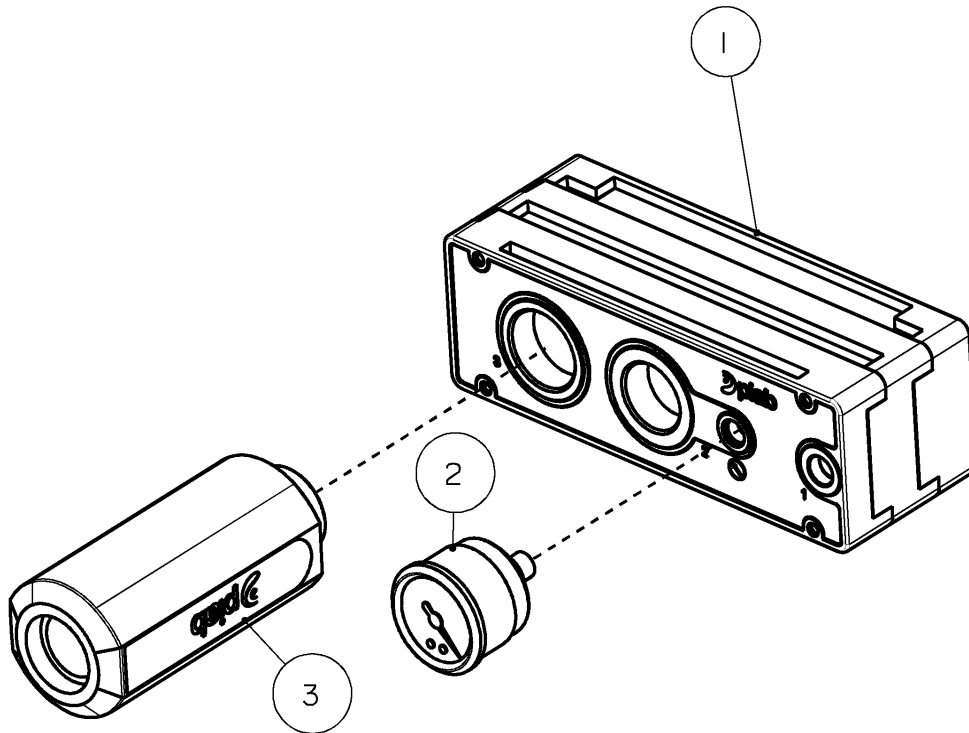
**Figure 3 DIMENSIONS : VACUUM SYSTEM**

**VACUUM PUMP WITH FILTER ASSEMBLY**



<b>6822100: VACUUM PUMP w/FILTER ASSEMBLY</b>			
<b>ITEM</b>	<b>PART #</b>	<b>DESCRIPTION</b>	<b>QTY</b>
1	6822110	VACUUM PUMP UNIT	1
2	6822140	VACUUM FILTER	1
3	7002000	NIPPLE	3
4	7004240	ELBOW	2
5	7036560	ELBOW	1

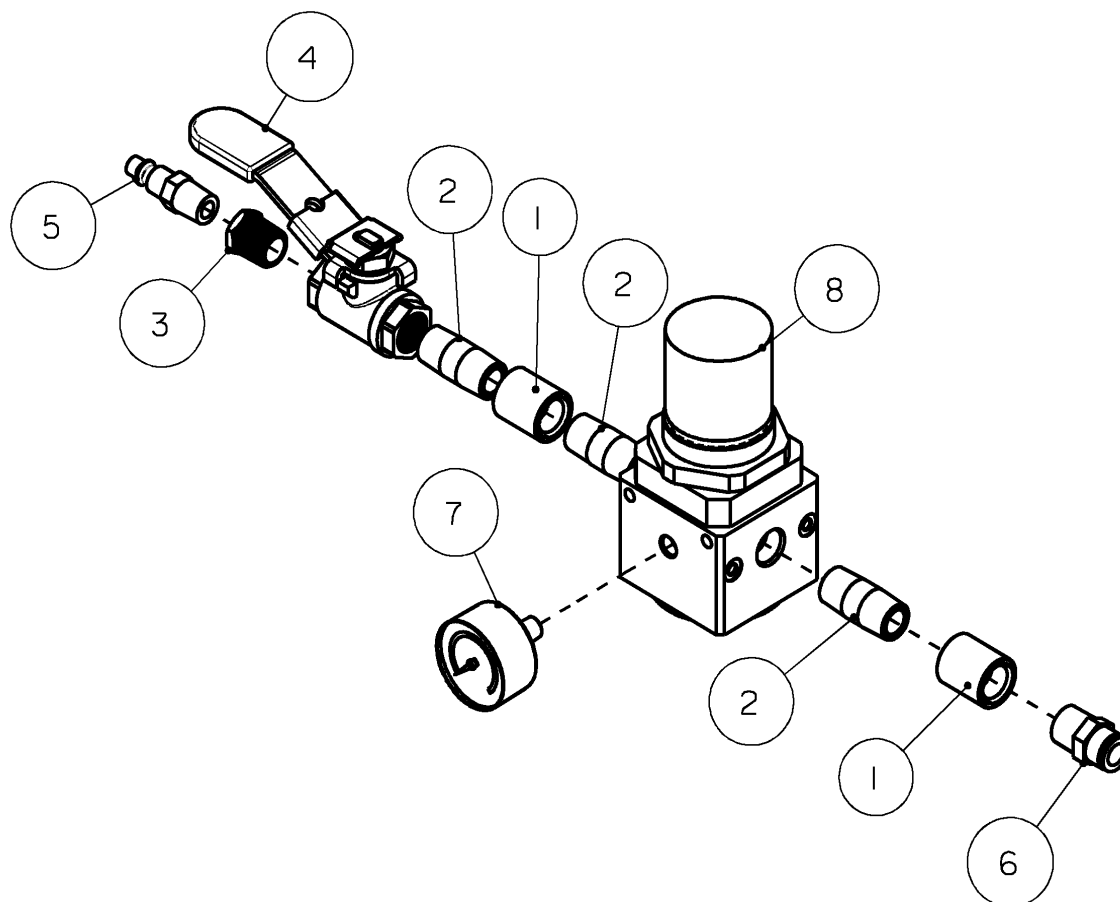
**Figure 4 6822100: VACUUM PUMP WITH FILTER ASSEMBLY**



6822110: VACUUM PUMP UNIT			
ITEM	PART #	DESCRIPTION	QTY
1	6822111	VACUUM PUMP	1
2	6822120	VACUUM GAUGE	1
3	6822130	SILENCER	1

**Figure 5 6822110: VACUUM PUMP ASSEMBLY**

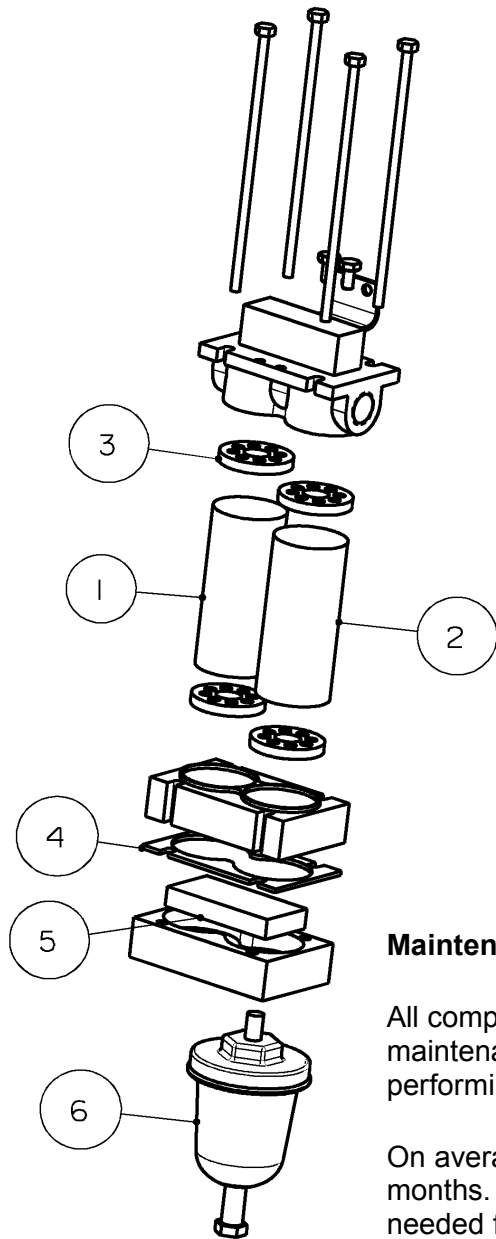


**PRESSURE REGULATOR ASSEMBLY**

<b>6822160: PRESSURE REGULATOR ASSEMBLY</b>			
<b>ITEM</b>	<b>PART #</b>	<b>DESCRIPTION</b>	<b>QTY</b>
1	7001130	COUPLING	2
2	7001800	NIPPLE	3
3	7002420	REDUCER	1
4	7025140	SHUT OFF VALVE	1
5	7034070	MALE PLUG	1
6	7036150	FITTING	1
7	7804010	PRESSURE GAUGE	1
8	7804990	PRESSURE REGULATOR	1

**Figure 6 6822160: PRESSURE REGULATOR ASSEMBLY**

**AIR EXTRACTOR / DRYER**



7200360 : AIR EXTRACTOR / DRYER			
ITEM	PART #	DESCRIPTION	QTY
1	7200361	1ST STAGE ELEMENT	1
2	7200362	2ND STAGE ELEMENT	1
3	7200363	CAP GASKET	4
4	7200364	GASKET	1
5	7200367	BASE CORE	1
6	7200365	AUTOMATIC DRAIN	1

**REPLACEMENT SERVICE KIT:**

**7200368 – REPLACEMENT SERVICE KIT INCLUDES PARTS :**

1. 7200361
2. 7200362
3. 7200363 (4)
4. 7200364
5. 7200367

**REPLACE IT EVERY 6 MONTHS**

**Maintenance:**

All compressed air filters require servicing of the elements. Proper maintenance is important in order to keep the Extractor/Dryer performing at optimum levels.

On average, we recommend servicing the Extractor/Dryer every 6 months. A complete Service Kit (7200368) provides everything needed for proper servicing. Service Kits include a 1st stage replacement element, 2nd stage replacement element, cap gaskets, base gasket, and base core (honeycomb).

**Figure 7 7200360: AIR EXTRACTOR / DRYER**

## MAINTENANCE

### VACUUM PUMP WITH FILTER ASSEMBLY

Vacuum Filter assembly (complete) – 6822140

Filter element – 6822150

Vacuum filter requires daily maintenance.

1. Open the filter
2. remove the filter element
3. clean the filter element and install it.

Vacuum pump requires max 100 psi (0.7 MPa) of pressure.

**DO NOT EXCEED 100 PSI ((0.7 MPa).**

Suggested operating pressure: 70 – 80 psi ( 0.48 – 0.55 MPa)

### AIR EXTRACTOR / DRYER

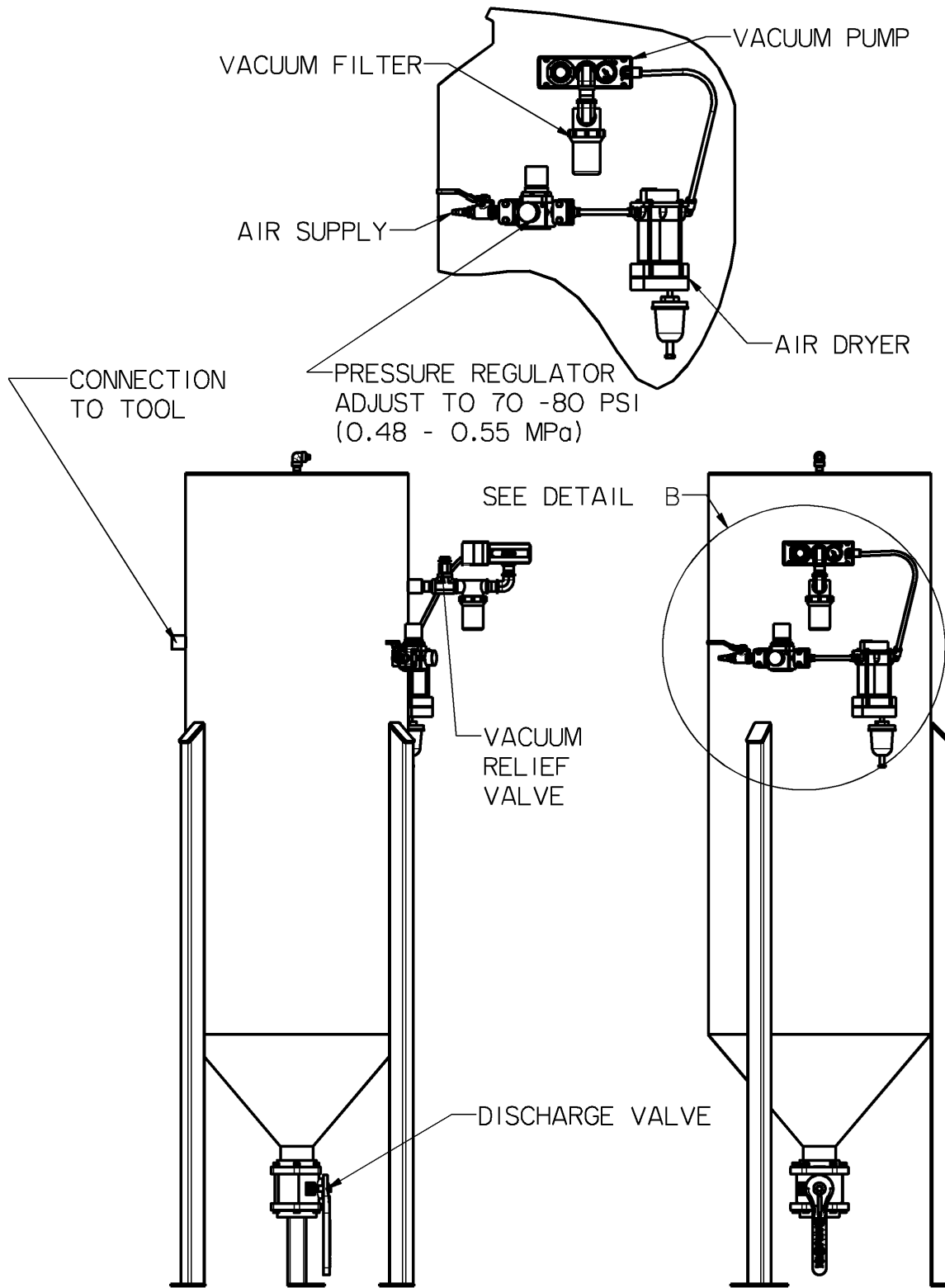
All compressed air filters require servicing of the elements. Proper maintenance is important in order to keep the Extractor/Dryer performing at optimum levels.

On average, we recommend servicing the Extractor/Dryer every 6 months. A complete Service Kit (7200368) provides everything needed for proper servicing. Service Kits include a 1st stage replacement element, 2nd stage replacement element, cap gaskets, base gasket, and base core (honeycomb).

### VACUUM RELIEF VALVE

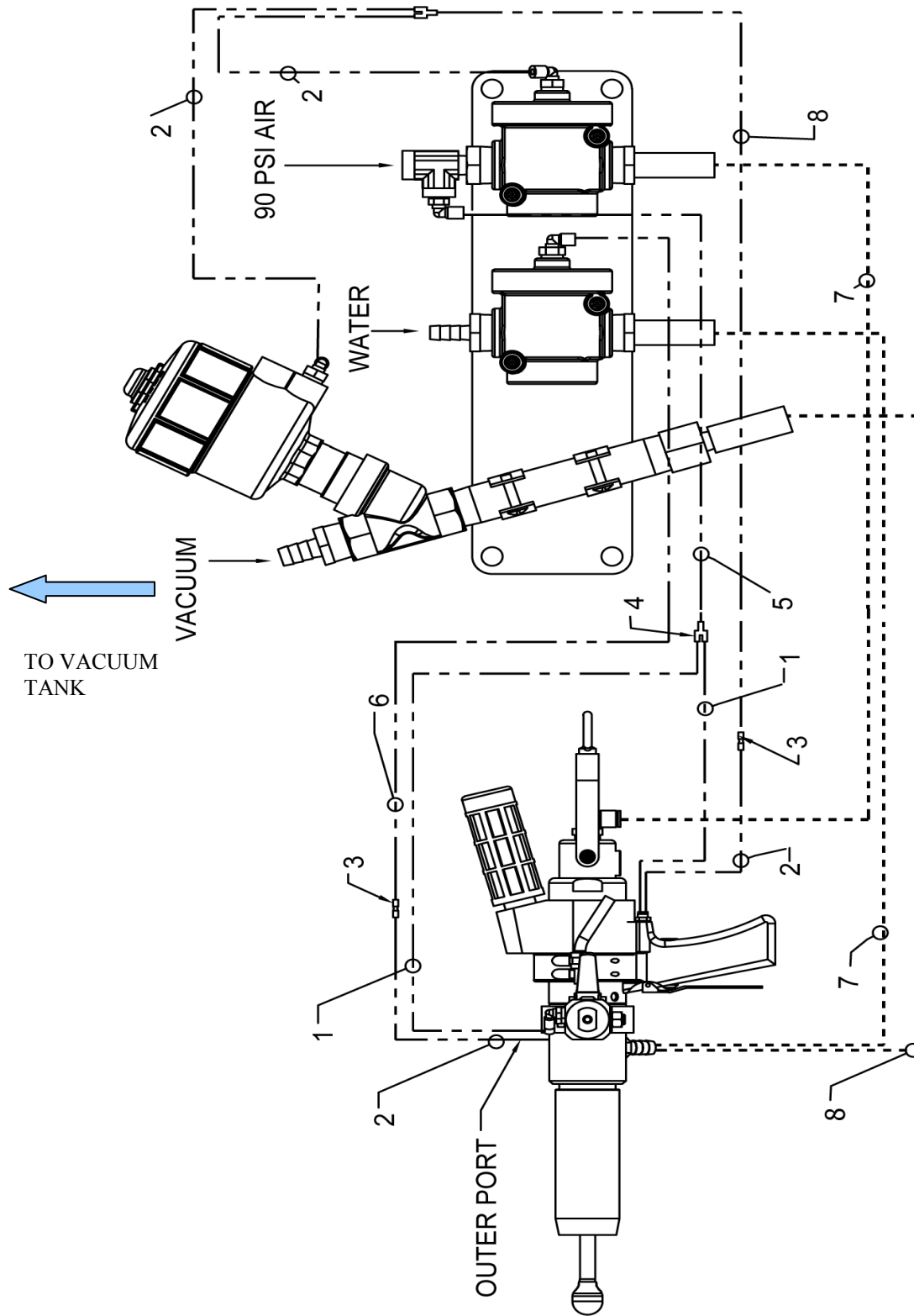
VACUUM RELIEF VALVE ADJUSTMENT 5-27 in/Hg.

### VACUUM SYSTEM INSTALLATION



**Figure 8 : VACUUM SYSTEM - INSTALLATION DIAGRAM**

### BUNG GUN INSTALLATION



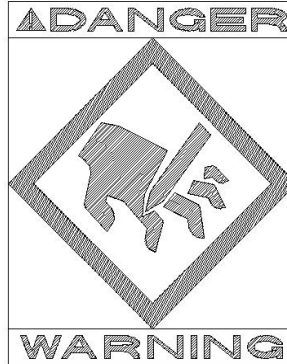
**Figure 9 : BUNG GUN - INSTALLATION DIAGRAM**

<b>BUNG GUN – VALVE CONNECTIONS</b>			
<b>ITEM</b>	<b>PART #</b>	<b>DESCRIPTION</b>	<b>QTY</b>
1	7300710	RED TUBING 5/32", 30" LONG	2
2	7300720	GREEN TUBING 5/32", 30" LONG	4
3	7037860	UNION	4
4	7038150	Y-CONNECTOR	1
5	7300970	GREEN TUBING 5/32", 96" LONG	1
6	7300980	RED TUBING 5/32", 96" LONG	2
7		3/8" HOSE – 96" LONG	2
8		1/2" HOSE, VACUUM, 96" LONG	1

**Figure 10 : BOM - BUNG GUN - INSTALLATION**

**NOTICE TO EMPLOYER AND PURCHASER OF TOOL**  
**NOTICE TO SAFETY DIRECTOR**

**You have purchased a powerful tool that, if misused, can cause severe injury and harm to your employees. You must instruct your employees in the safe and proper use of this tool and to follow the safety procedures and instructions that have been supplied by the manufacturer of this tool. Please follow the following instructions.**



1. Instruct tool operators to test the tool each day before using it to be sure it does not malfunction. Remove and repair any tool that malfunctions.
2. Instruct tool operators to immediately stop using a tool that malfunctions or is defective.
3. Instruct personnel to immediately remove all tools that malfunction. Be sure to disconnect tool from power supply.
4. Instruct all personnel to stay clear of tool, and not to stand or walk in front of, or next to tool when in use.
5. Point out to all personnel the dangers related to the misuse of tool and the importance of following safety procedures and instructions.
6. Do not make, or allow others to make, alterations or modifications to this tool. Replace all lost or illegible labels.
7. Follow all safety, installation and maintenance instructions provided with this tool. Establish proper safety procedures in accordance with local and national requirements to prevent accidental energizing of tool that can cause injuries.
8. If this tool is sold or change in ownership takes place, you must provide the new owner all safety instructions, notices and maintenance instructions you were originally provided. You can obtain additional copies of the instructions from Kentmaster, free of charge upon request.
9. Give copies of instructions to:
  - (A) Tool Operators
  - (B) Maintenance Supervisor
  - (C) Clean-up Supervisor

## GENERAL INFORMATION

---

COVERING: SAFETY PRECAUTIONS AND PLACING INTO SERVICE  
**VACUUM SYSTEM**

---

**READ THIS MANUAL CAREFULLY BEFORE INSTALLING, OPERATING OR SERVICING  
THIS TOOL**

---

IT IS THE RESPONSIBILITY OF THE EMPLOYER TO PLACE THIS INFORMATION INTO THE HANDS OF THE OPERATOR.

---

### **PLACING INTO SERVICE**

---

 **WARNING**

= Hazards or unsafe practices which could result in severe personal injury, death or substantial property damage.

 **CAUTION**

= Hazards or unsafe practices which could result in minor personal injury, product or property damage.

 **NOTICE**

= Important installation, operation or maintenance information.

 **WARNING**

Installation, adjustment repair and maintenance of this tool must be made by trained and qualified personnel.

 **WARNING**

Always disconnect power supply from tool before:  
(A) Installing or removing blade from tool.  
(B) Making repairs or adjustments to the tool.  
(C) performing maintenance or cleanup work.



## Kentmaster Worldwide Location

Kentmaster Equipment (Aust) PTY.LTD.

Unit 2,24 Central Court  
Browns Plains Qld. 4118  
Australia

Telephone: (07) 3806-8400  
Fax: (07) 3806-7933  
[Australia@Kentmaster.com](mailto:Australia@Kentmaster.com)

Kentmaster do Brasil, Ltda.  
Av. Dr. Joao Teodoro No. 805  
Bairro De Vila Rezende  
13405-240 Piracicaba, SP,  
Brazil

Telephone #1: (019) 3 413 3113  
Telephone #2: (019)983-4973  
Fax: (019) 3 413 3113  
[Brazil@Kentmaster.com](mailto:Brazil@Kentmaster.com)

Kentmaster (IRL) LTD.  
Benamore, Dublin Road.  
Roscrea,  
CO, Tipperary,  
Ireland

Telephone: (353) 0505-23292  
Fax: (353) 0505-23299  
[Ireland@Kentmaster.com](mailto:Ireland@Kentmaster.com)

Kentmaster Equipment (NZ) LTD.  
1/88 Ford Road  
Onekawa  
Napier 4110  
New Zealand

Telephone #1: (64) 6 835 2471  
Fax: (64) 6 877 7857  
[NewZealand@Kentmaster.com](mailto:NewZealand@Kentmaster.com)

Kentmaster South Africa (PTY) LTD.

Johannesburg - S. Africa  
Unit 54 Sunnyrock Park  
Sunrock Close, Germiston  
South Africa

Telephone: (27) 11-455-3748  
Fax: (27) 11-455-3749  
[SouthAfrica@Kentmaster.com](mailto:SouthAfrica@Kentmaster.com)

Kentmaster (UK ) LTD.  
Unit 16 Avonbank Ind. Centre  
West Town Rd, Avonmouth-Bristol,  
BS11 9DE  
England

Telephone: (44) 117-923-5035  
Fax: (44)-117-932-9010  
[UK@Kentmaster.com](mailto:UK@Kentmaster.com)

Kentmaster Mfg. Co., Inc.  
1801 South Mountain Ave.  
Monrovia, CA, 91016  
USA

Telephone #1: (626) 359-8888  
Telephone #2: (800) 421-1477  
Fax: (626) 303-5151  
[info@Kentmaster.com](mailto:info@Kentmaster.com)

Kentmaster Omaha  
4417 South 139th Street  
Omaha, NE, 68137  
USA

Telephone #1: (402) 896-3355  
Telephone #2: (800) 367-3181  
Fax: (402) 896-3311  
[Omaha@Kentmaster.com](mailto:Omaha@Kentmaster.com)

**INDEX**

<b>OPERATING AND SAFETY INSTRUCTIONS</b> .....	2
<b>SERVICE</b> .....	3
<b>PARTS BOOK</b> .....	4
<b>“VACUUM SYSTEM” MAIN ASSEMBLY</b> .....	4
<b>VACUUM PUMP WITH FILTER ASSEMBLY</b> .....	7
<b>PRESSURE REGULATOR ASSEMBLY</b> .....	9
<b>AIR EXTRACTOR / DRYER</b> .....	10
<b>MAINTENANCE</b> .....	11
<b>VACUUM SYSTEM INSTALLATION</b> .....	12
<b>BUNG GUN INSTALLATION</b> .....	13
<b>NOTICE TO EMPLOYER AND PURCHASER OF TOOL</b> .....	15
<b>GENERAL INFORMATION</b> .....	16
<i>Kentmaster Worldwide Location</i> .....	17
<b>INDEX</b> .....	18
<b>FIGURES - INDEX</b> .....	18

**FIGURES - INDEX**

<i>Figure 1 MODEL “VACUUM SYSTEM”</i> .....	4
<i>Figure 2 BOM FOR MODEL “VACUUM SYSTEM”</i> .....	5
<i>Figure 3 DIMENSIONS : VACUUM SYSTEM</i> .....	6
<i>Figure 4 6822100: VACUUM PUMP WITH FILTER ASSEMBLY</i> .....	7
<i>Figure 5 6822110: VACUUM PUMP ASSEMBLY</i> .....	8
<i>Figure 6 6822160: PRESSURE REGULATOR ASSEMBLY</i> .....	9
<i>Figure 7 7200360: AIR EXTRACTOR / DRYER</i> .....	10
<i>Figure 8 : VACUUM SYSTEM - INSTALLATION DIAGRAM</i> .....	12
<i>Figure 9 : BUNG GUN - INSTALLATION DIAGRAM</i> .....	13
<i>Figure 10 : BOM - BUNG GUN - INSTALLATION</i> .....	14